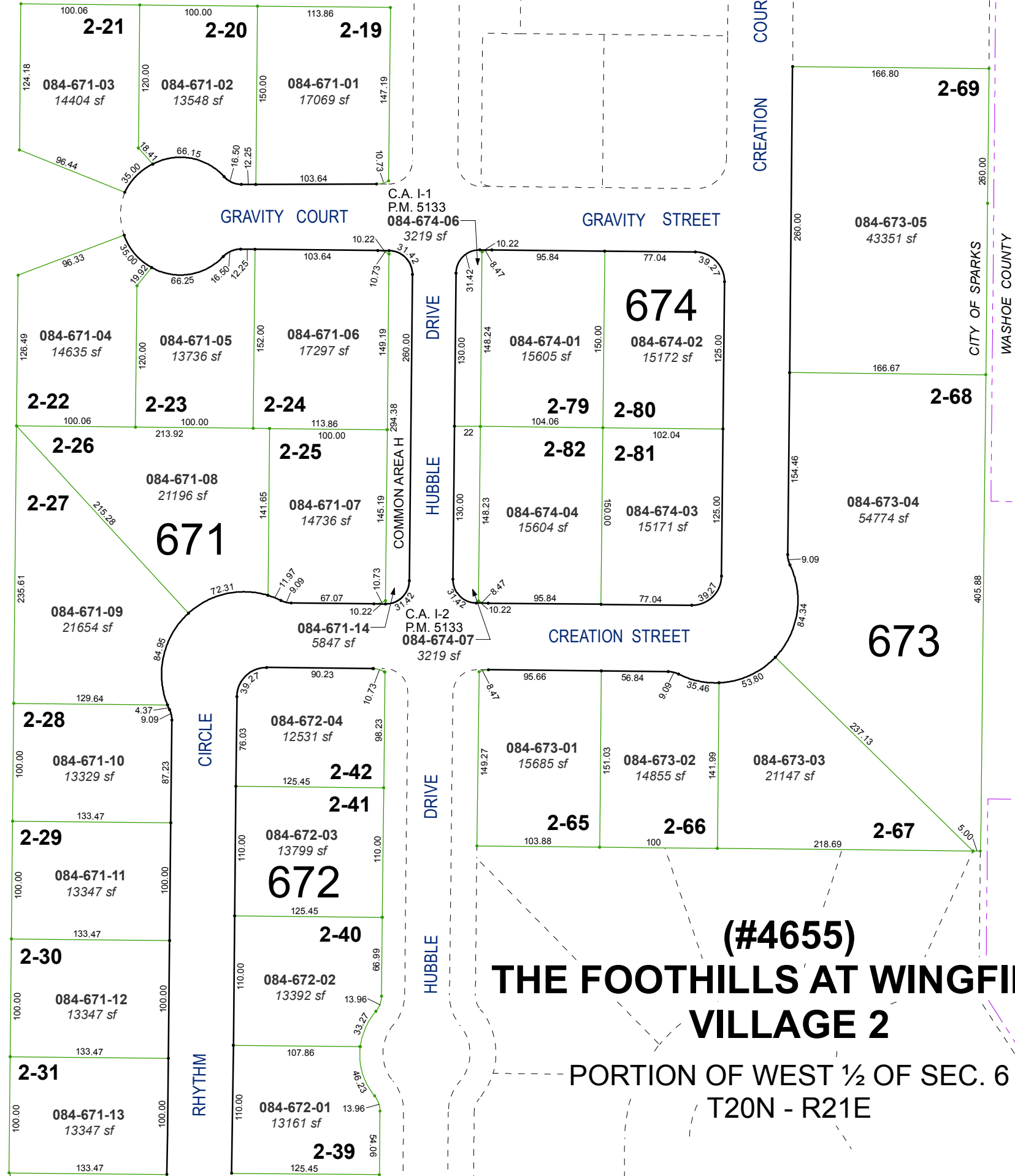


* PORTION OF HUBBLE DRIVE DEDICATED PER DED.TM. 4653



**(#4655)
 THE FOOTHILLS AT WINGFIELD
 VILLAGE 2**

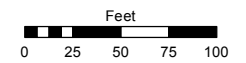
PORTION OF WEST 1/2 OF SEC. 6
 T20N - R21E

C.A. = COMMON AREA

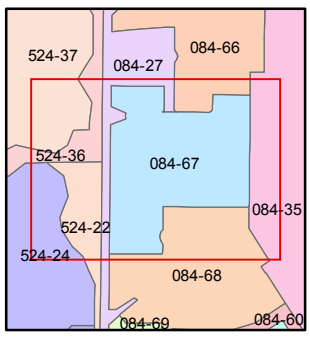
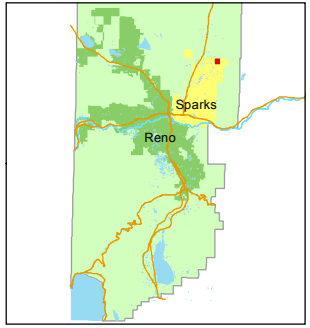
Assessor's Map Number
084-67

STATE OF NEVADA
WASHOE COUNTY
ASSESSOR'S OFFICE
 Joshua G. Wilson, Assessor

1001 East Ninth Street
 Building D
 Reno, Nevada 89512
 (775) 328-2231



1 inch = 100 feet



created by: EMG 9/16/2014

last updated: _____

area previously shown on map(s)
084-27

NOTE: This map was prepared for the use of the Washoe County Assessor for assessment and illustrative purposes only. It does not represent a survey of the premises. No liability is assumed as to the sufficiency or accuracy of the data delineated hereon.