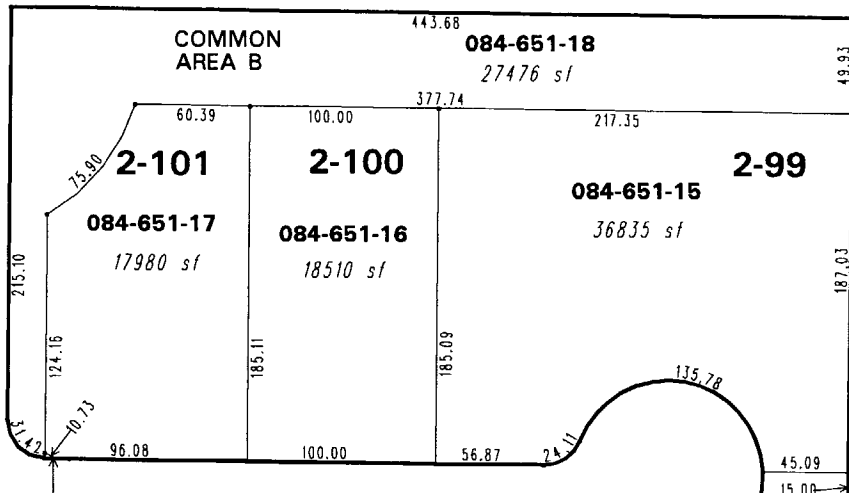
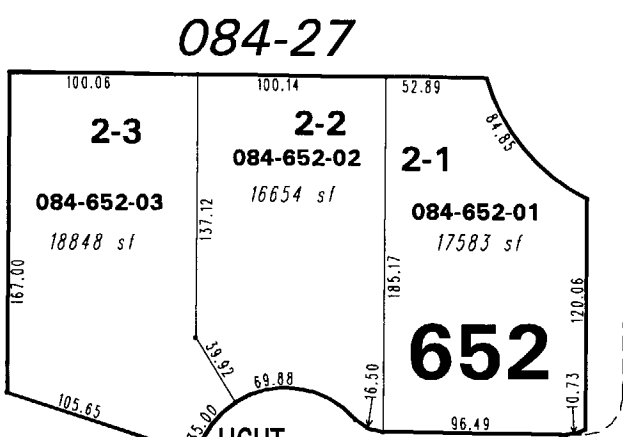
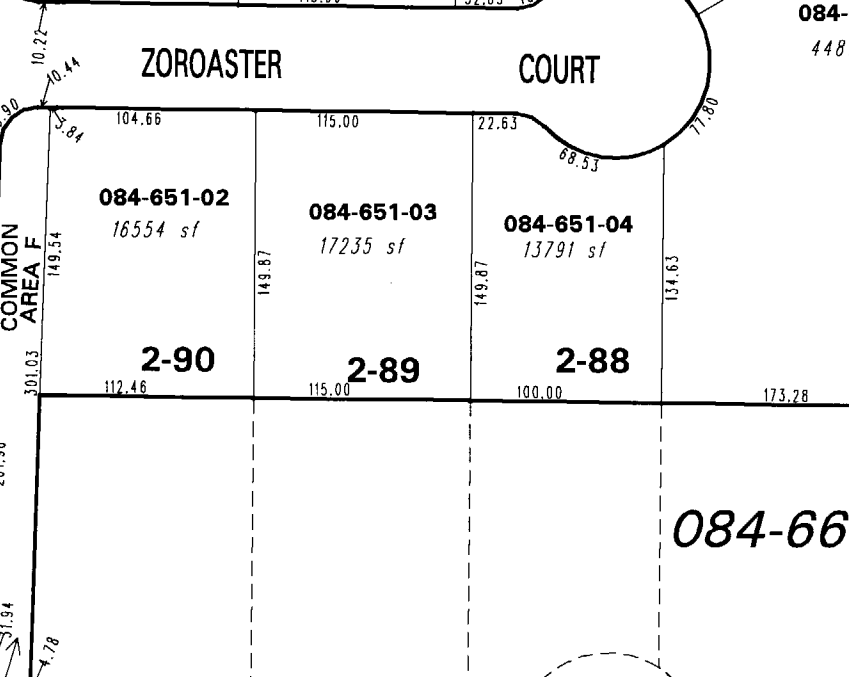
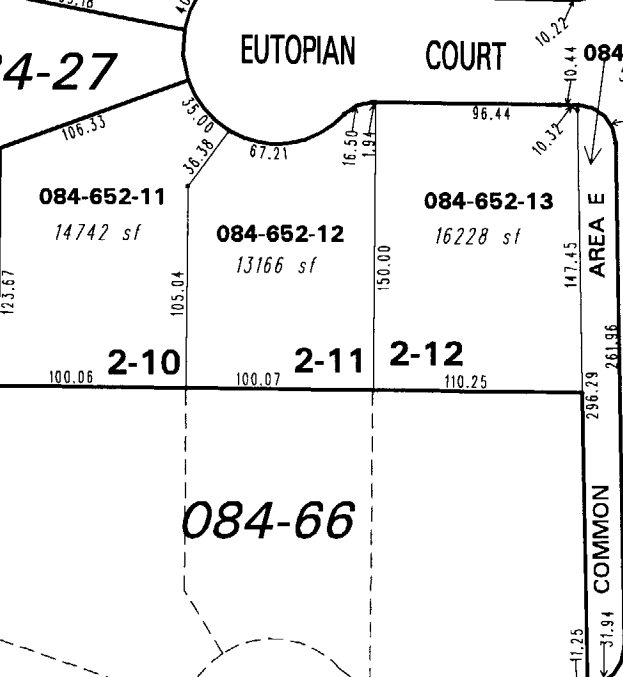
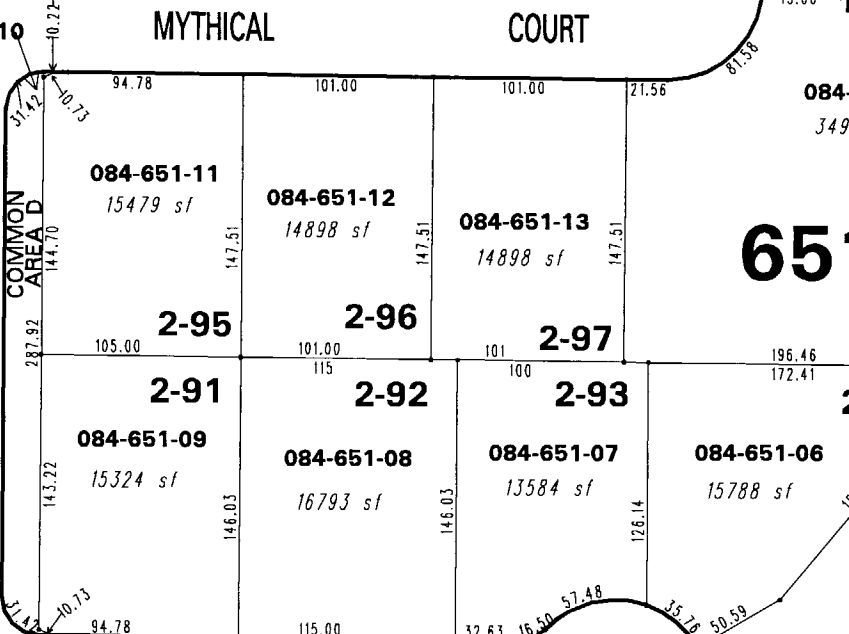
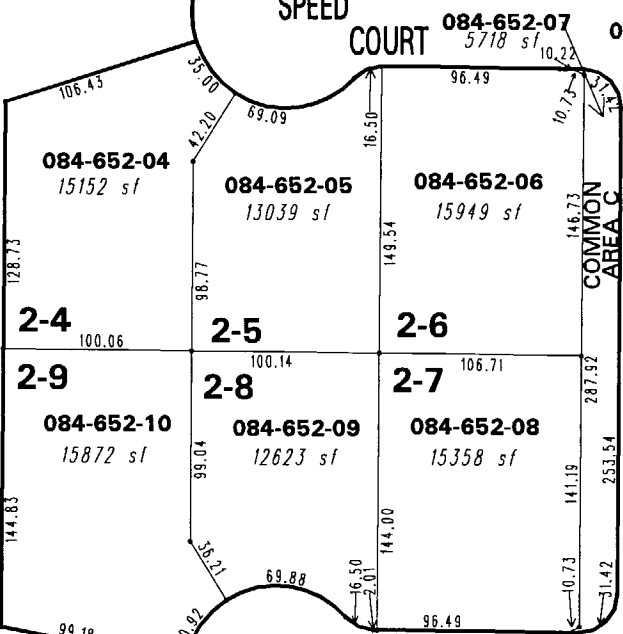


* PORTION OF HUBBLE DRIVE DEDICATED PER DED. TM. 4653

1 6



(#4655)
THE FOOTHILLS AT WINGFIELD VILLAGE 2
 PORTION OF WEST 1/2 OF SEC. 6
 T20N - R21E



BOOK 524

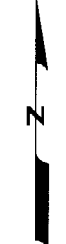
EAGLENEST ROAD

084-35

084-27

084-66

084-66



1" = 100'



NOTE: This map is prepared for the use of the Washoe County Assessor for assessment and illustrative purposes only. It does not represent a survey of the premises. No liability is assumed as to the sufficiency or the accuracy of the data delineated hereon.

WAVE COURT 084-651-01 7683 sf

EXPOSITION COURT

Office of Washoe County Assessor, Nevada - Robert W. McGowan

This area previously shown on 084-27

NOTE: Areas of parcels which are less than 2 acres are shown in square feet.

Drawn by PK 7/7/06
 Revised _____