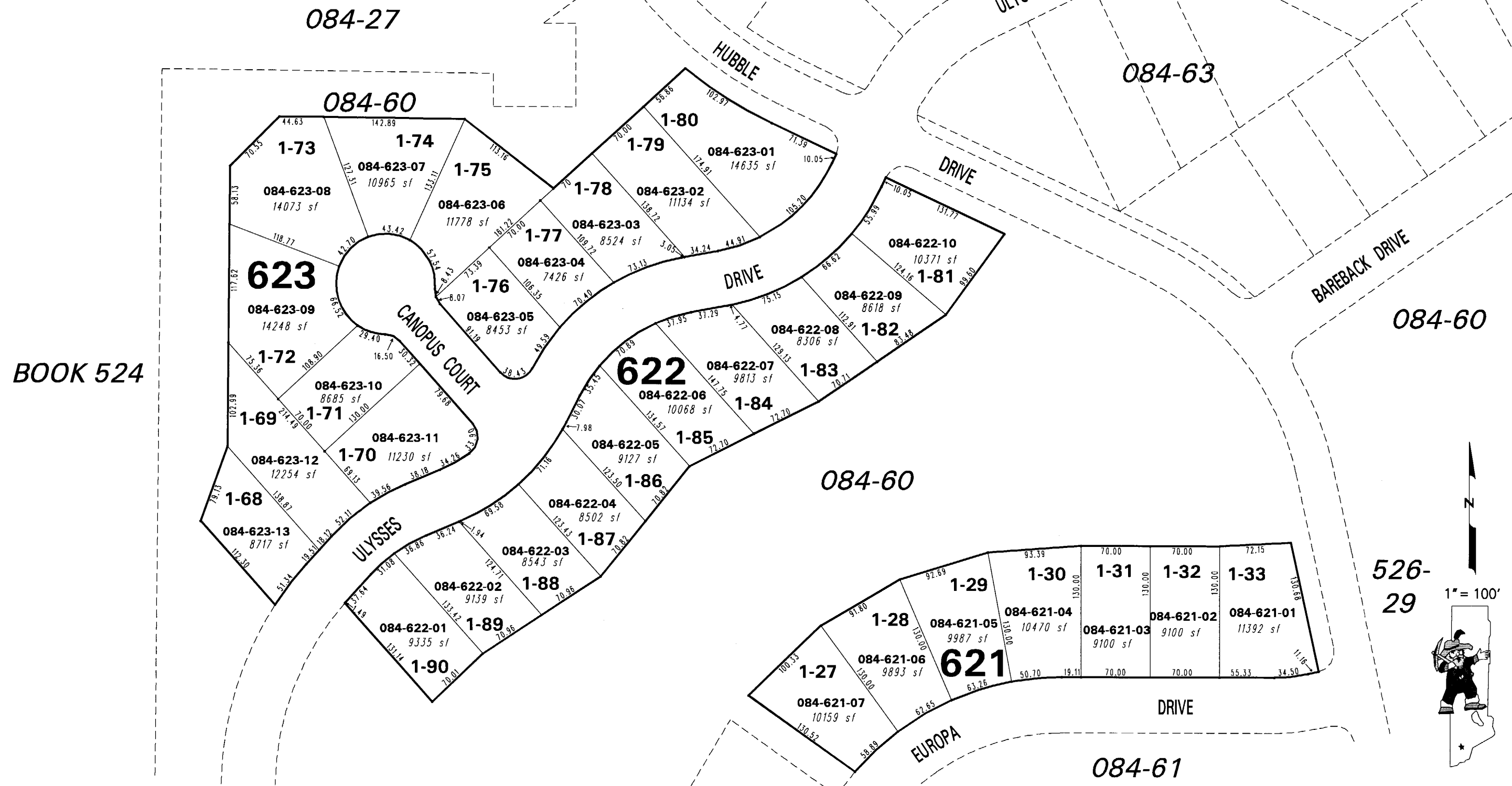
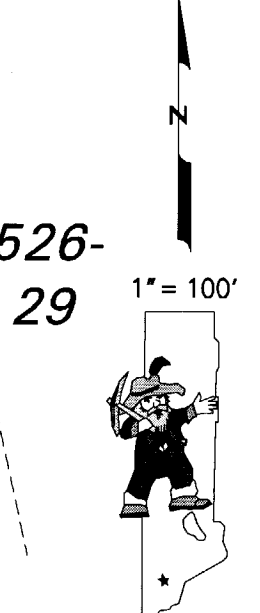


(#4326)
**THE FOOTHILLS AT WINGFIELD
VILLAGE 1**
PORTION OF THE SW 1/4 SECTION 6, T20N - R21E



BOOK 524



NOTE: This map is prepared for the use of the Washoe County Assessor for assessment and illustrative purposes only. It does not represent a survey of the premises. No liability is assumed as to the sufficiency or the accuracy of the data delineated hereon.

Office of Washoe County Assessor, Nevada - Robert W. McGowan

This area previously shown on 084-56

NOTE: Areas of parcels which are less than 2 acres are shown in square feet.

Drawn by	CFB 4/15/2004
Revised	PK 9/13/05 PK 7/10/06