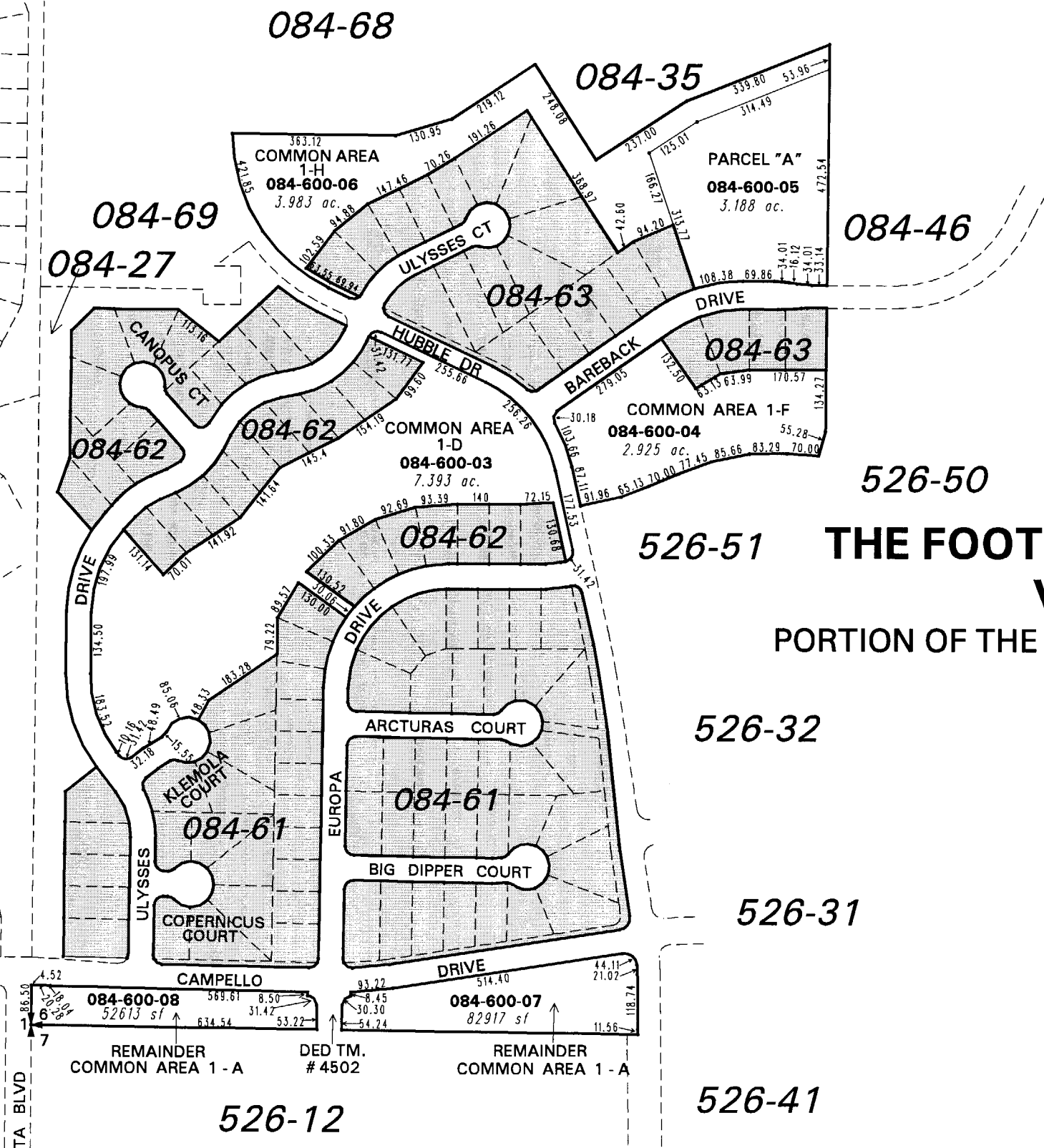


BOOK 524



526-50 (#4326)
THE FOOTHILLS AT WINGFIELD VILLAGE 1
 PORTION OF THE SW 1/4 SECTION 6, T20N - R21E

NOTE: This map is prepared for the use of the Washoe County Assessor for assessment and illustrative purposes only. It does not represent a survey of the premises. No liability is assumed as to the sufficiency or the accuracy of the data delineated hereon.

Office of Washoe County Assessor, Nevada - Robert W. McGowan

This area previously shown on 084-56

Drawn by CFB 4/15/2004
 Revised PK 5/5/06 PK 7/10/06

NOTE: Areas of parcels which are less than 2 acres are shown in square feet.