

THE HIGHLANDS AT CIMARRON EAST

PHASE 3

POR. E 1/2 SECTION 6

T20N - R21E

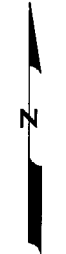
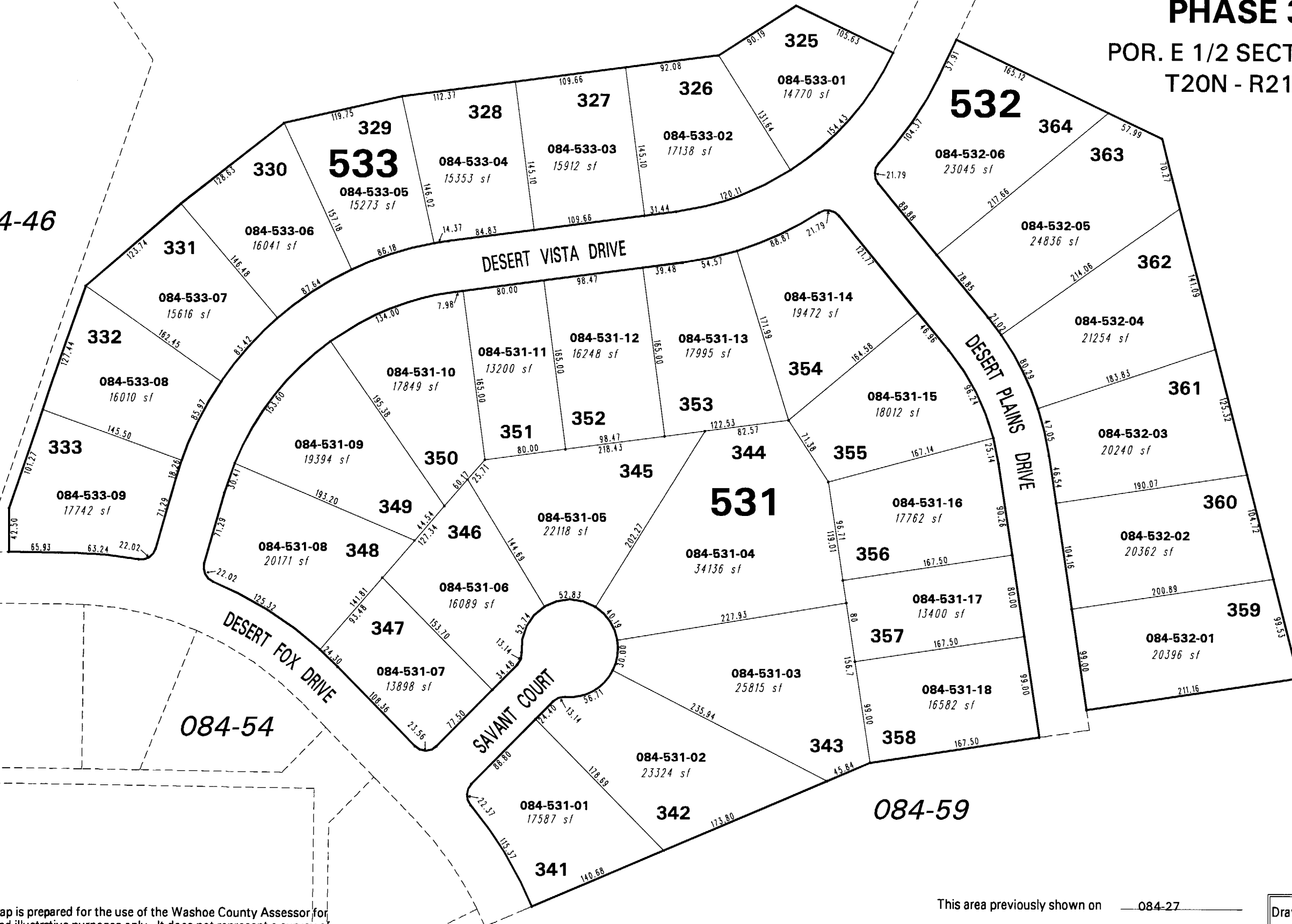
084-50

084-46

084-50

084-54

084-59



1" = 100'



NOTE: This map is prepared for the use of the Washoe County Assessor for assessment and illustrative purposes only. It does not represent a survey of the premises. No liability is assumed as to the sufficiency or the accuracy of the data delineated hereon.

Office of Washoe County Assessor, Nevada - Robert W. McGowan

This area previously shown on 084-27

NOTE: Areas of parcels which are less than 2 acres are shown in square feet.

Drawn by HCS 09/02/03  
 Revised CFB 3/25/2004