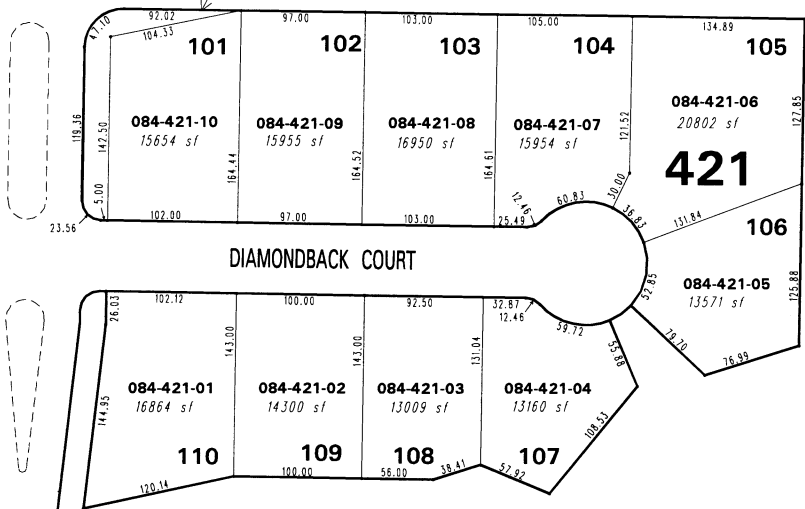


LA POSADA DRIVE

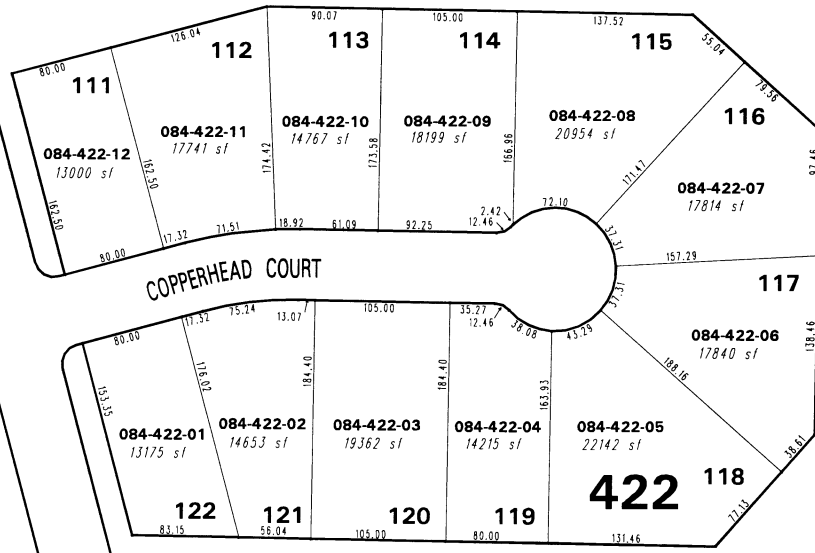
COMMON AREA "A"  
084-421-11  
4161 sf



DIAMONDBACK COURT

084-41

DESERT VISTA DRIVE



COPPERHEAD COURT

084-43

Office of Washoe County Assessor, Nevada - Robert W. McGowan

**(#4027)  
THE HIGHLANDS  
AT CIMARRON EAST  
PHASE 1**

POR. E 1/2 SEC. 6  
T20N - R21E

084-41

084-41

This area previously shown on 84-27

NOTE: This map is prepared for the use of the Washoe County Assessor for assessment and illustrative purposes only. It does not represent a survey of the premises. No liability is assumed as to the sufficiency or the accuracy of the data delineated hereon.

NOTE: Areas of parcels which are less than 2 acres are shown in square feet.

Drawn by HCS 12/14/01  
 Revised \_\_\_\_\_  
 \_\_\_\_\_

