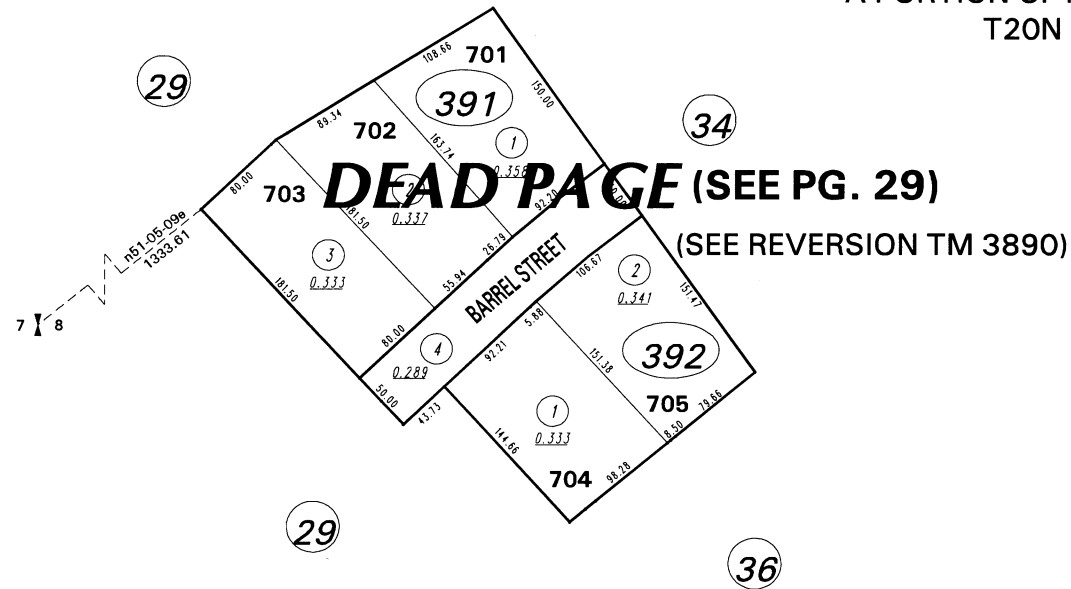


(#3614)
STAMPMILL ESTATES UNIT NO. 7
A PORTION OF NW¼ SECTION 8
T20N - R24E



NOTE: This map is prepared for the use of the Washoe County Assessor for assessment and illustrative purposes only. It does not represent a survey of the premises. No liability is assumed as to the sufficiency or the accuracy of the data delineated hereon.

Office of Washoe County Assessor, Nevada - Robert W. McGowan

This area previously shown on 84-29

NOTE: Areas of parcels which are less than 2 acres are shown in square feet.

Drawn by	WCE/RLT 1/14/98
Revised	TWT 12/20/00