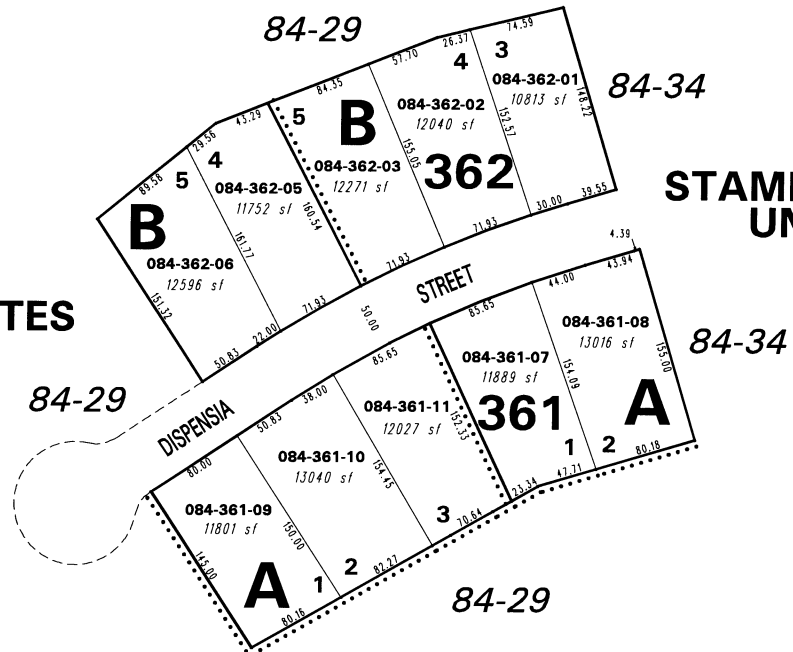


PORTION OF NW 1/4 OF SECTION 8
T20N - R24E

(#2643)
STAMPMILL ESTATES
UNIT NO. 2C

(#2559)
STAMPMILL ESTATES
UNIT NO. 2B



1" = 100'



NOTE: This map is prepared for the use of the Washoe County Assessor for assessment and illustrative purposes only. It does not represent a survey of the premises. No liability is assumed as to the sufficiency or the accuracy of the data delineated hereon.

Office of Washoe County Assessor, Nevada - Robert W. McGowan

This area previously shown on 84-29

NOTE: Areas of parcels which are less than 2 acres are shown in square feet.

Drawn by	GS 5/91
Revised	5/92 3/95 4/96 12/96 1/15/98 RL
TWT	12/19/00, 2/12/01