

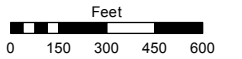
PORTION OF SECTION 13, T20N - R23E
SECTION 18, T20N - R24E
RECORD OF SURVEY #746

Assessor's Map Number

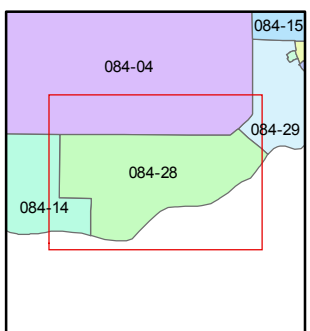
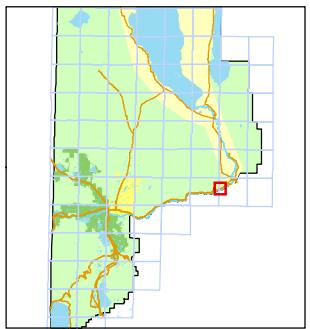
084-28

STATE OF NEVADA
WASHOE COUNTY
ASSESSOR'S OFFICE
Michael E. Clark, Assessor

1001 East Ninth Street
Building D
Reno, Nevada 89512
(775) 328-2231



1 inch = 600 feet



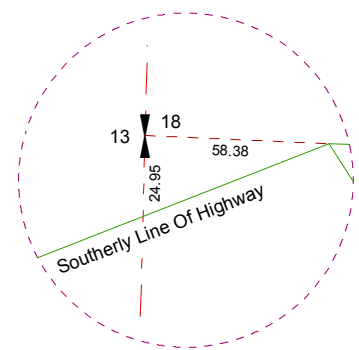
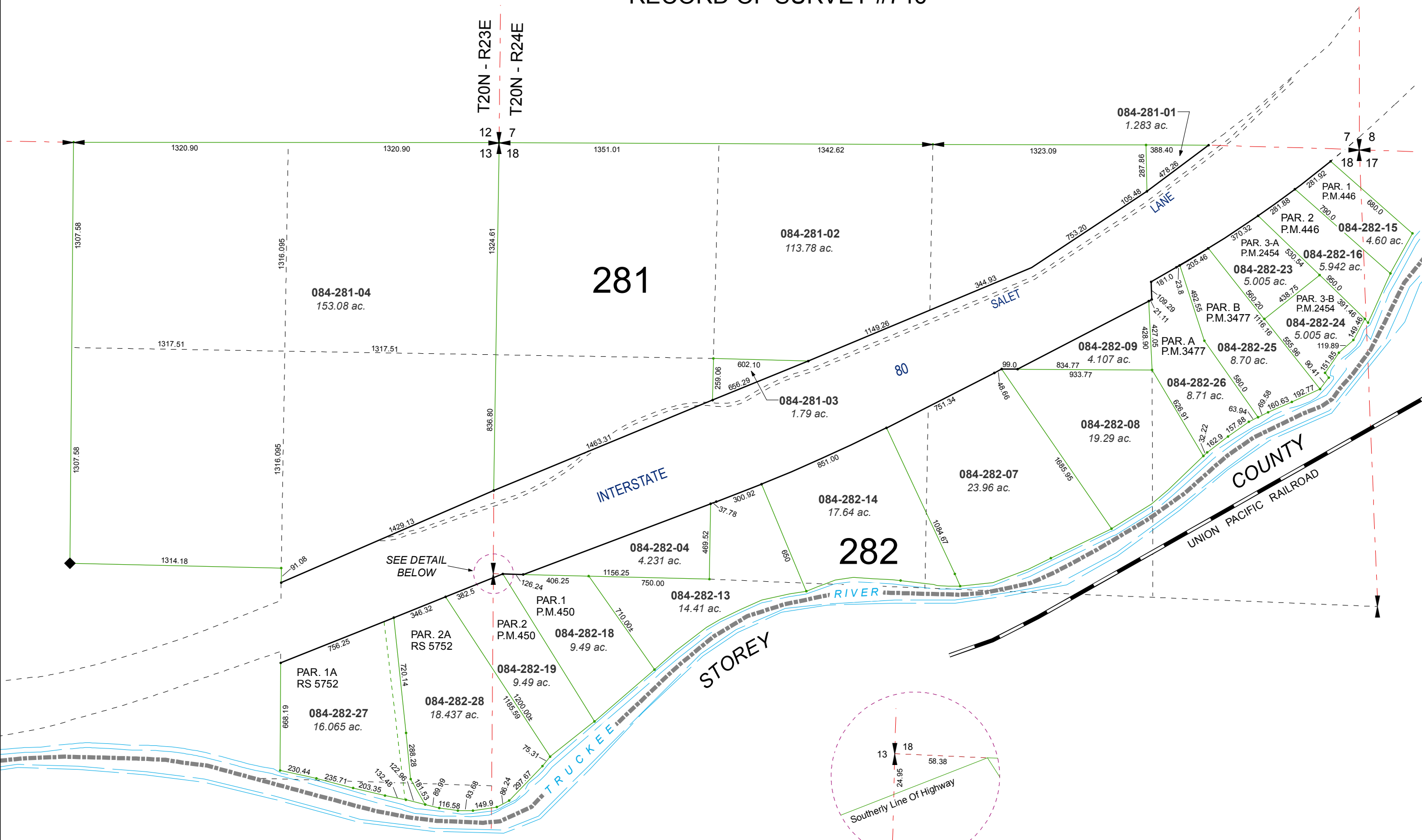
created by: KSB 7/08/2016

last updated: _____

area previously shown on map(s)

084-14

NOTE: This map was prepared for the use of the Washoe County Assessor for assessment and illustrative purposes only. It does not represent a survey of the premises. No liability is assumed as to the sufficiency or accuracy of the data delineated hereon.



DETAIL
(Not to Scale)

SEE DETAIL BELOW