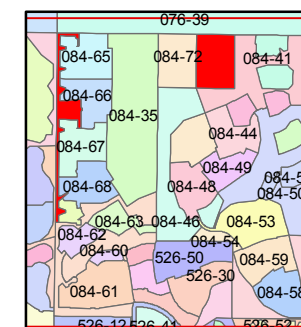
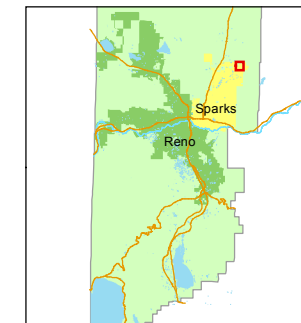


1 inch = 500 feet



created by: CFB 10/18/2012

last updated: EMG 9/15/14 EMG 10/16/15

area previously shown on map(s)

NOTE: This map was prepared for the use of the Washoe County Assessor for assessment and illustrative purposes only. It does not represent a survey of the premises. No liability is assumed as to the sufficiency or accuracy of the data delineated hereon.

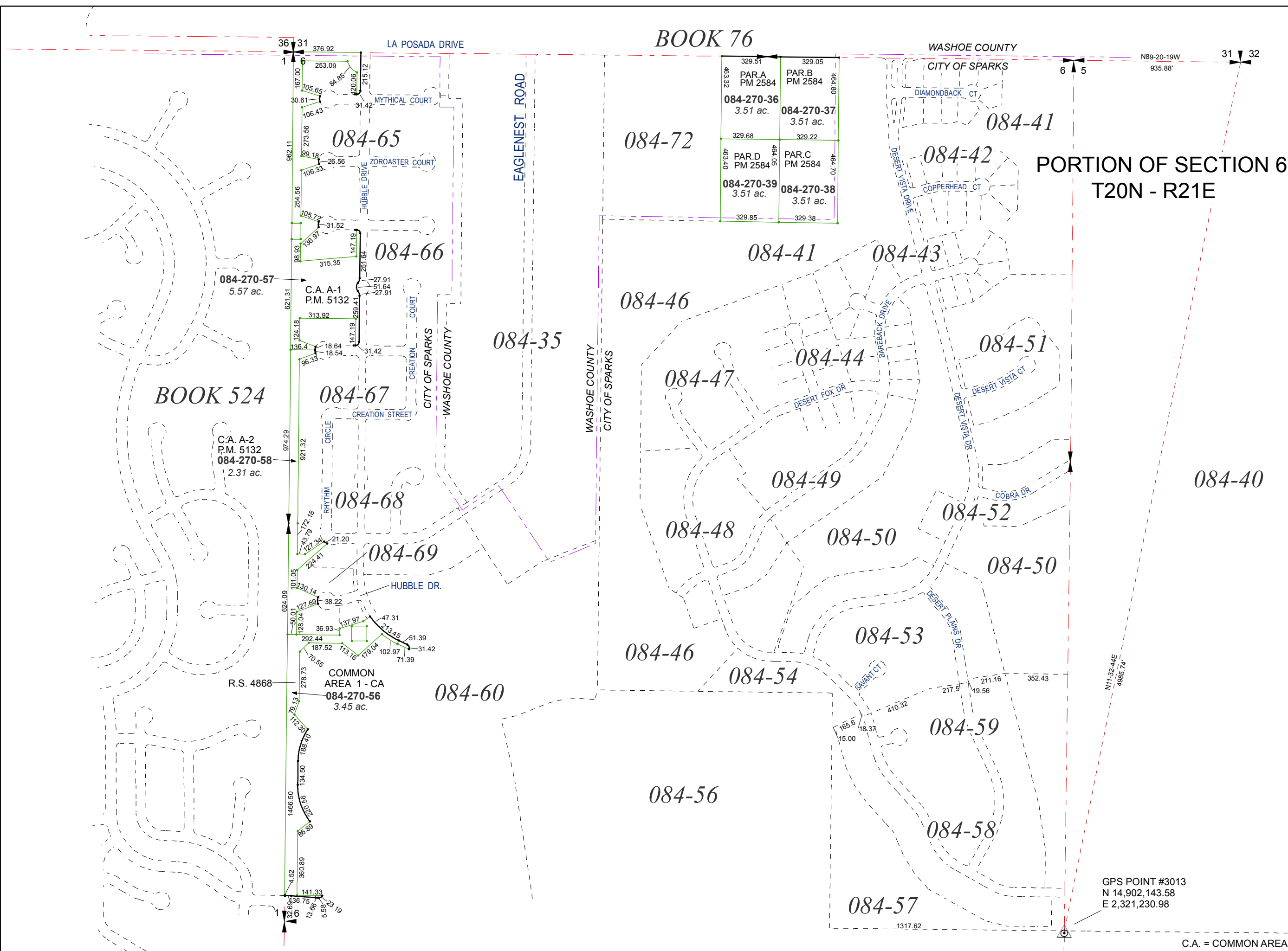
BOOK 76

WASHOE COUNTY

CITY OF SPARKS

**PORTION OF SECTION 6
T20N - R21E**

329.51 463.32 PAR.A PM 2584 084-270-36 3.51 ac.	329.05 464.80 PAR.B PM 2584 084-270-37 3.51 ac.
329.68 463.40 PAR.D PM 2584 084-270-39 3.51 ac.	329.22 464.70 PAR.C PM 2584 084-270-38 3.51 ac.



GPS POINT #3013
N 14,902,143.58
E 2,321,230.98

C.A. = COMMON AREA