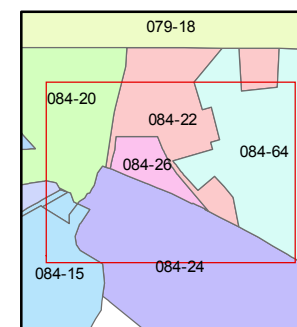
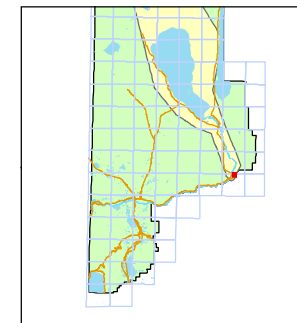




1 inch = 200 feet



created by: EMG 4/16/2015

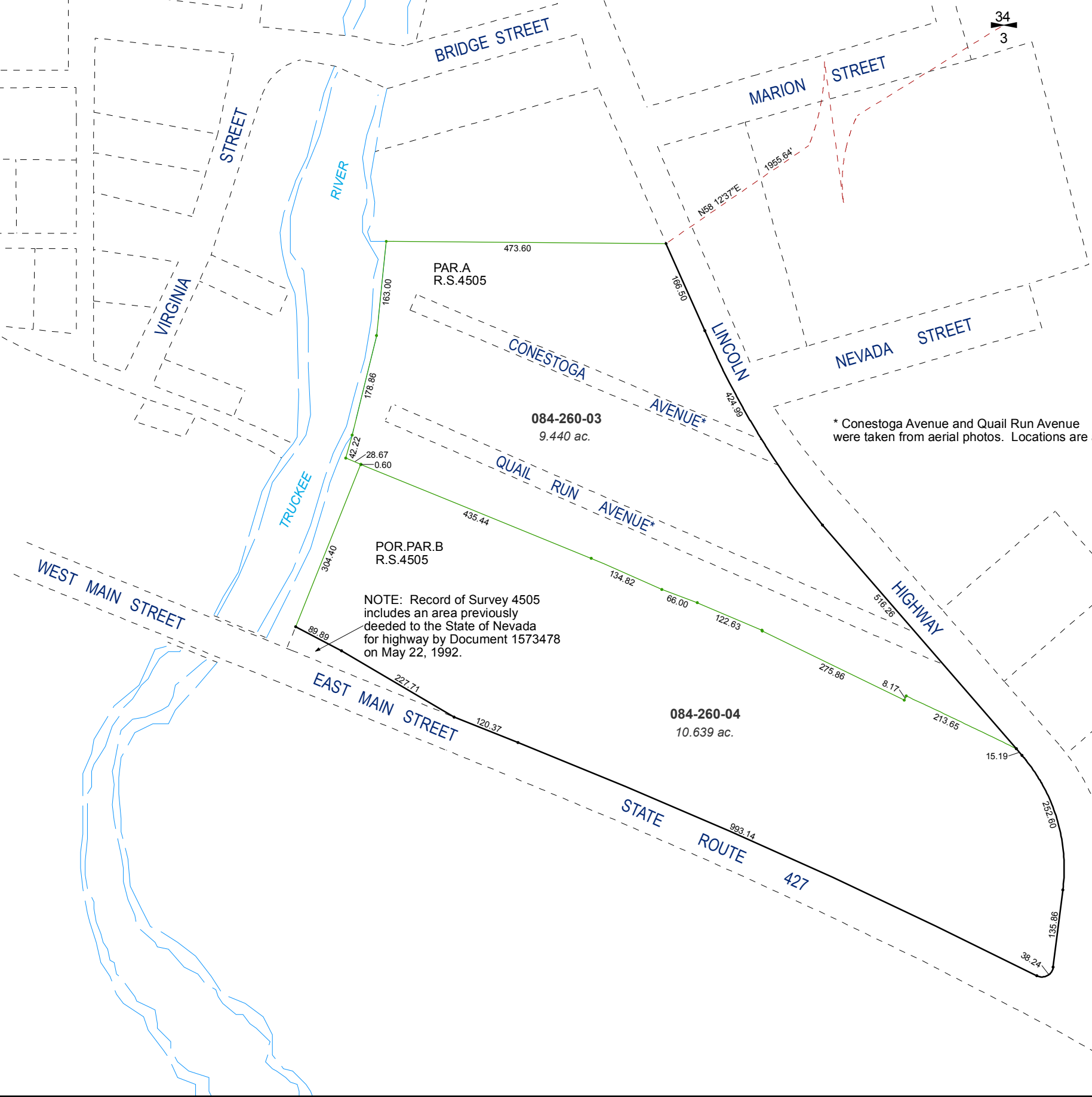
last updated: _____

area previously shown on map(s)

084-24

NOTE: This map was prepared for the use of the Washoe County Assessor for assessment and illustrative purposes only. It does not represent a survey of the premises. No liability is assumed as to the sufficiency or accuracy of the data delineated hereon.

(#164)
TOWN OF WADSWORTH
PORTION OF NW ¼ SECTION 3
T20N - R24E



* Conestoga Avenue and Quail Run Avenue were taken from aerial photos. Locations are approximate.