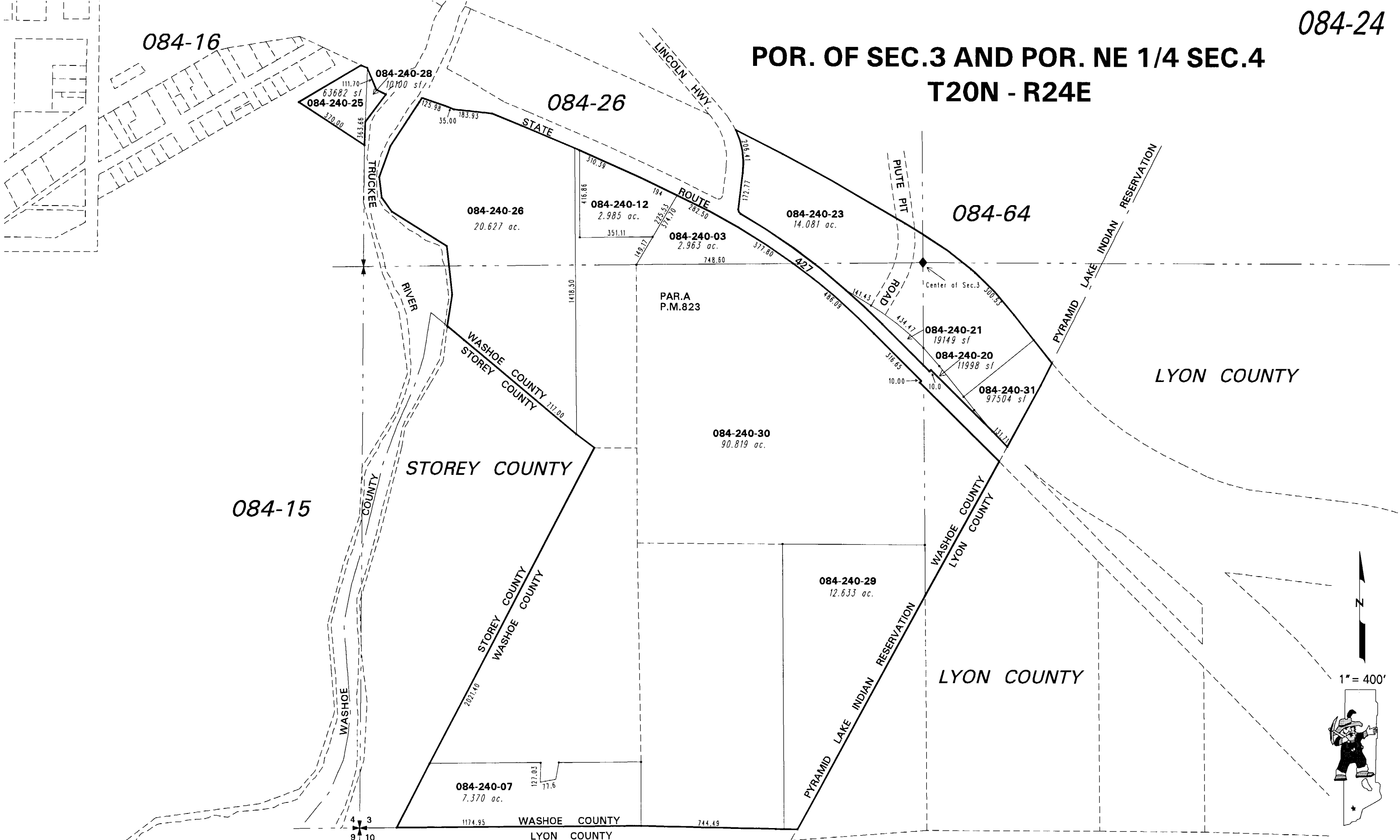


POR. OF SEC.3 AND POR. NE 1/4 SEC.4 T20N - R24E



084-16

084-26

084-64

084-15

LYON COUNTY

STOREY COUNTY

LYON COUNTY

LYON COUNTY

NOTE: This map is prepared for the use of the Washoe County Assessor for assessment and illustrative purposes only. It does not represent a survey of the premises. No liability is assumed as to the sufficiency or the accuracy of the data delineated hereon.

Office of Washoe County Assessor, Nevada - Robert W. McGowan

This area previously shown on _____

NOTE: Areas of parcels which are less than 2 acres are shown in square feet.

Drawn by	CFB 8/30/2005
Revised	_____