

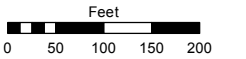
PORTIONS OF NW 1/4 SECTION 3 & NE 1/4 SECTION 4 T20N - R24E

Assessor's Map Number

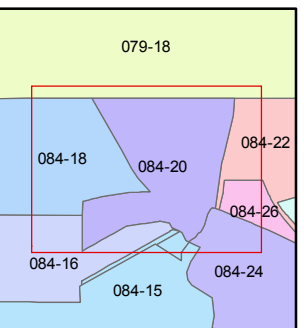
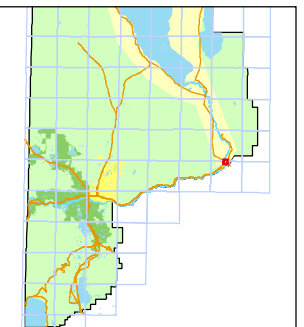
084-20

STATE OF NEVADA
WASHOE COUNTY
 ASSESSOR'S OFFICE
 Michael E. Clark, Assessor

1001 East Ninth Street
 Building D
 Reno, Nevada 89512
 (775) 328-2231



1 inch = 200 feet



created by: TWT 11/06/2009

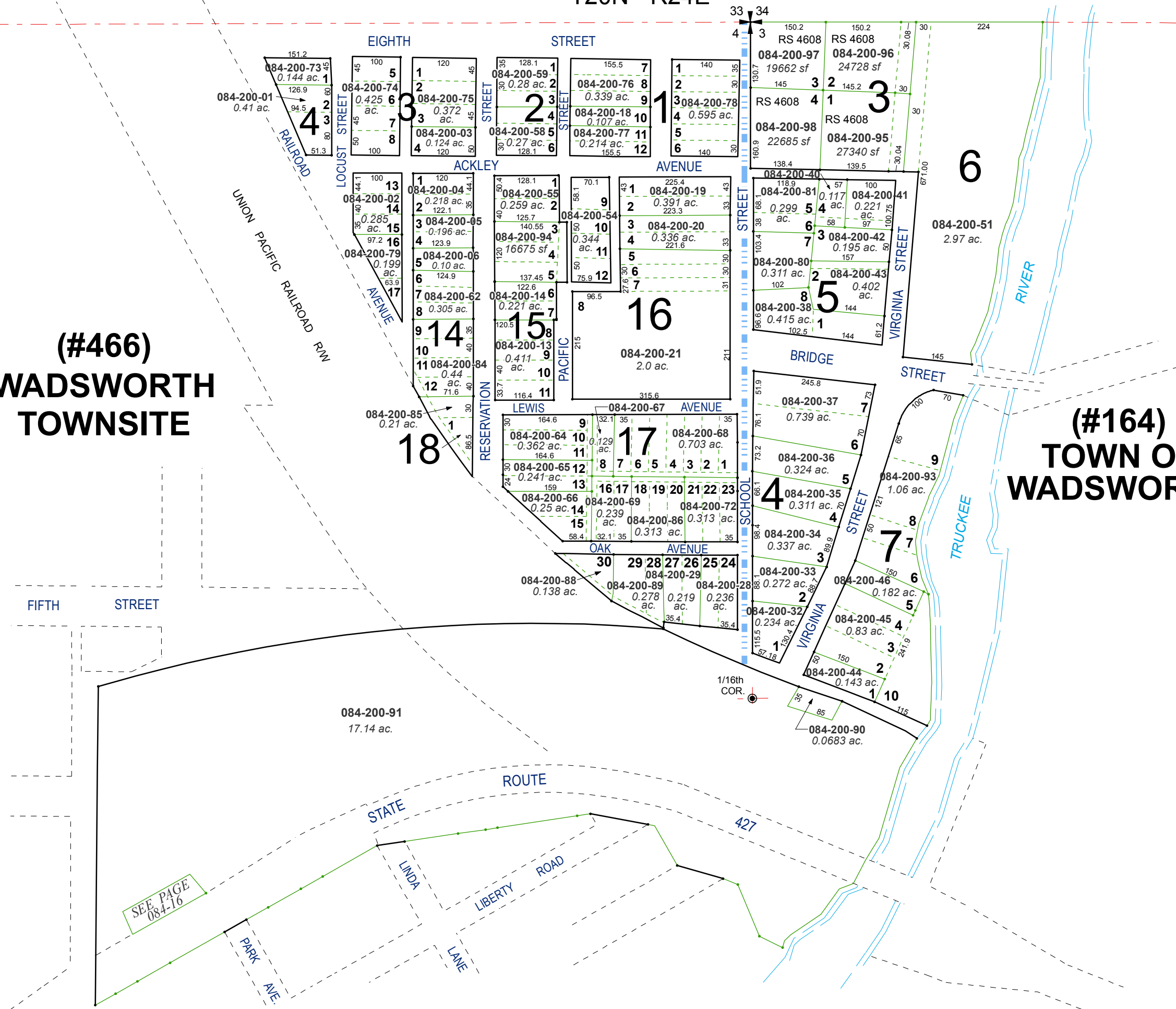
last updated: EMG 4/15/15 KSB 1/12/18

area previously shown on map(s)

NOTE: This map was prepared for the use of the Washoe County Assessor for assessment and illustrative purposes only. It does not represent a survey of the premises. No liability is assumed as to the sufficiency or accuracy of the data delineated hereon.

**(#466)
 WADSWORTH
 TOWNSITE**

**(#164)
 TOWN OF
 WADSWORTH**



SEE PAGE
 084-16