

PORTION OF SECTIONS 4, 5, 8 & 9
T20N - R24E

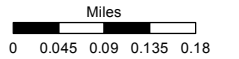
BOOK 79

Assessor's Map Number

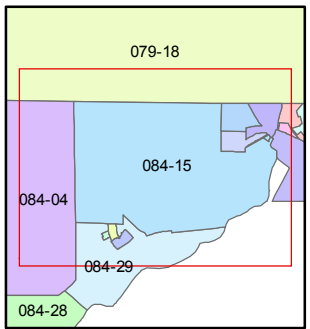
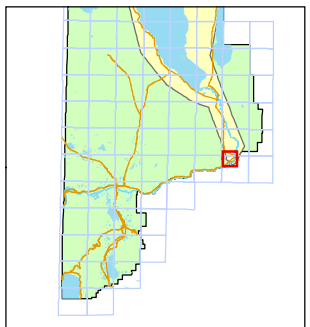
084-15

STATE OF NEVADA
WASHOE COUNTY
ASSESSOR'S OFFICE
Michael E. Clark, Assessor

1001 East Ninth Street
Building D
Reno, Nevada 89512
(775) 328-2231



1 inch = 1,000 feet

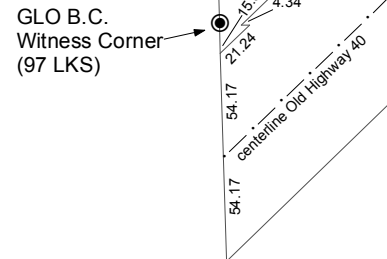
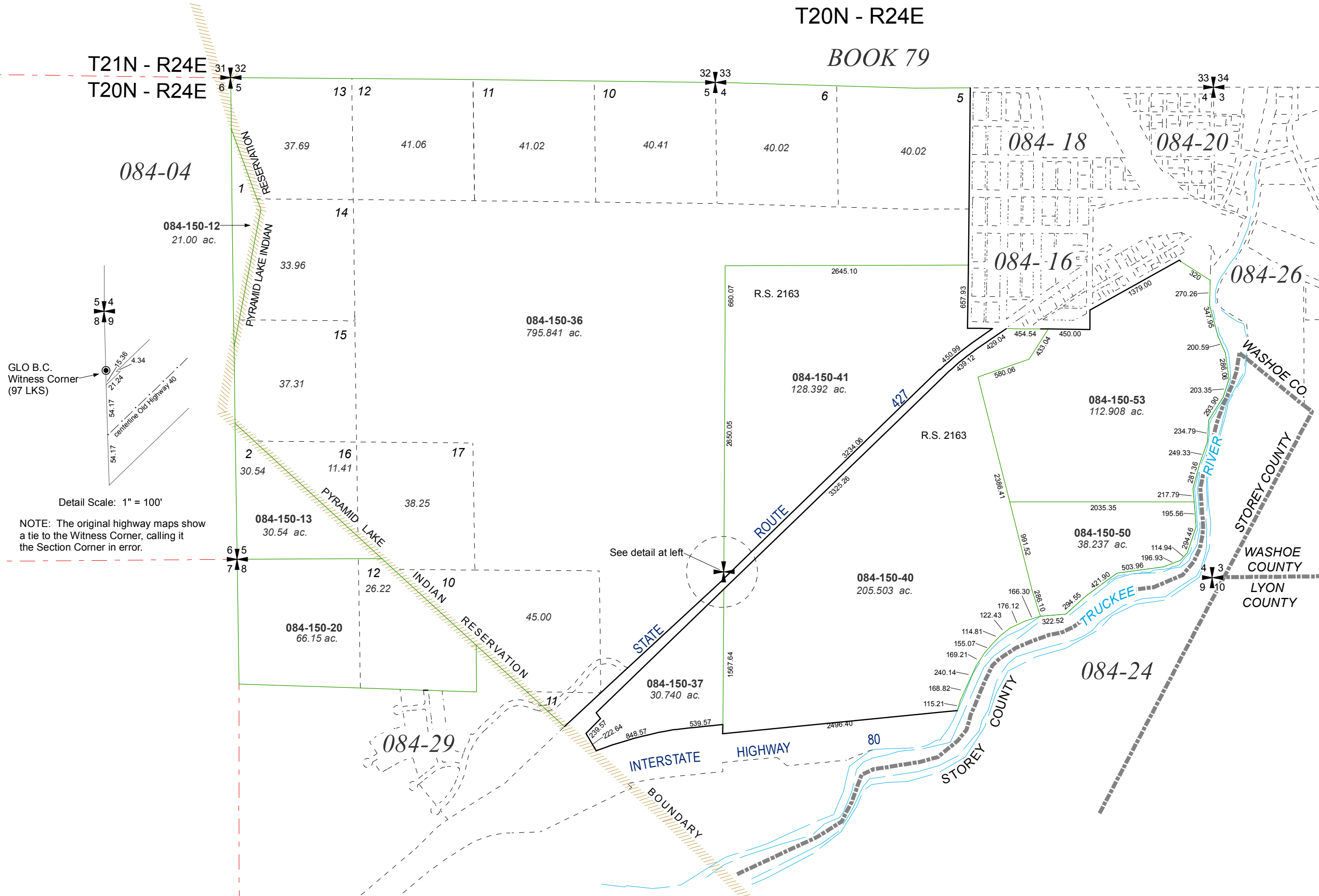


created by: CFB 06/20/2011

last updated: CFB 04/02/2015

area previously shown on map(s)

NOTE: This map was prepared for the use of the Washoe County Assessor for assessment and illustrative purposes only. It does not represent a survey of the premises. No liability is assumed as to the sufficiency or accuracy of the data delineated hereon.



Detail Scale: 1" = 100'

NOTE: The original highway maps show a tie to the Witness Corner, calling it the Section Corner in error.