

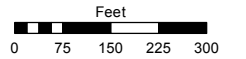
SE 1/4 OF SE 1/4 OF SECTION 9,  
 POR. OF SW 1/4 OF SECTION 10 &  
 NW 1/4 OF NW 1/4 OF SECTION 15  
 T19N - R21E

Assessor's Map Number

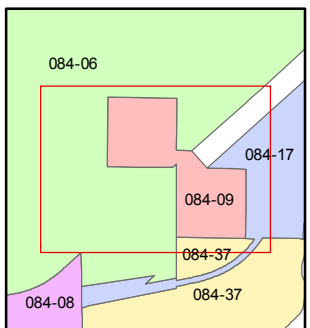
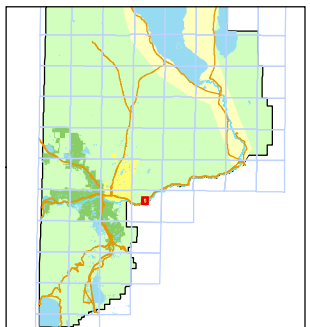
**084-09**

STATE OF NEVADA  
**WASHOE COUNTY**  
 ASSESSOR'S OFFICE  
 Michael E. Clark, Assessor

1001 East Ninth Street  
 Building D  
 Reno, Nevada 89512  
 (775) 328-2231



1 inch = 300 feet



created by: KSB 3/24/2016

last updated: \_\_\_\_\_

area previously shown on map(s) \_\_\_\_\_

NOTE: This map was prepared for the use of the Washoe County Assessor for assessment and illustrative purposes only. It does not represent a survey of the premises. No liability is assumed as to the sufficiency or accuracy of the data delineated hereon.

