

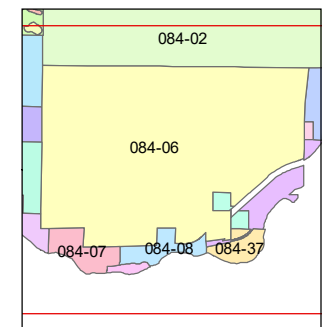
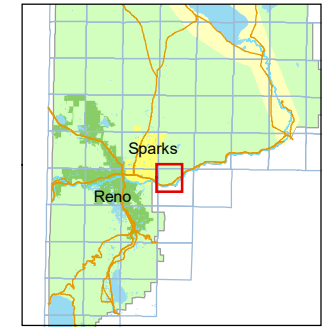
PORTION OF THE NORTH 1/2 OF T19N - R21E

Assessor's Map Number
084-06

STATE OF NEVADA
WASHOE COUNTY
ASSESSOR'S OFFICE
1001 East Ninth Street, Building D
Reno, Nevada 89512
(775) 328-2231

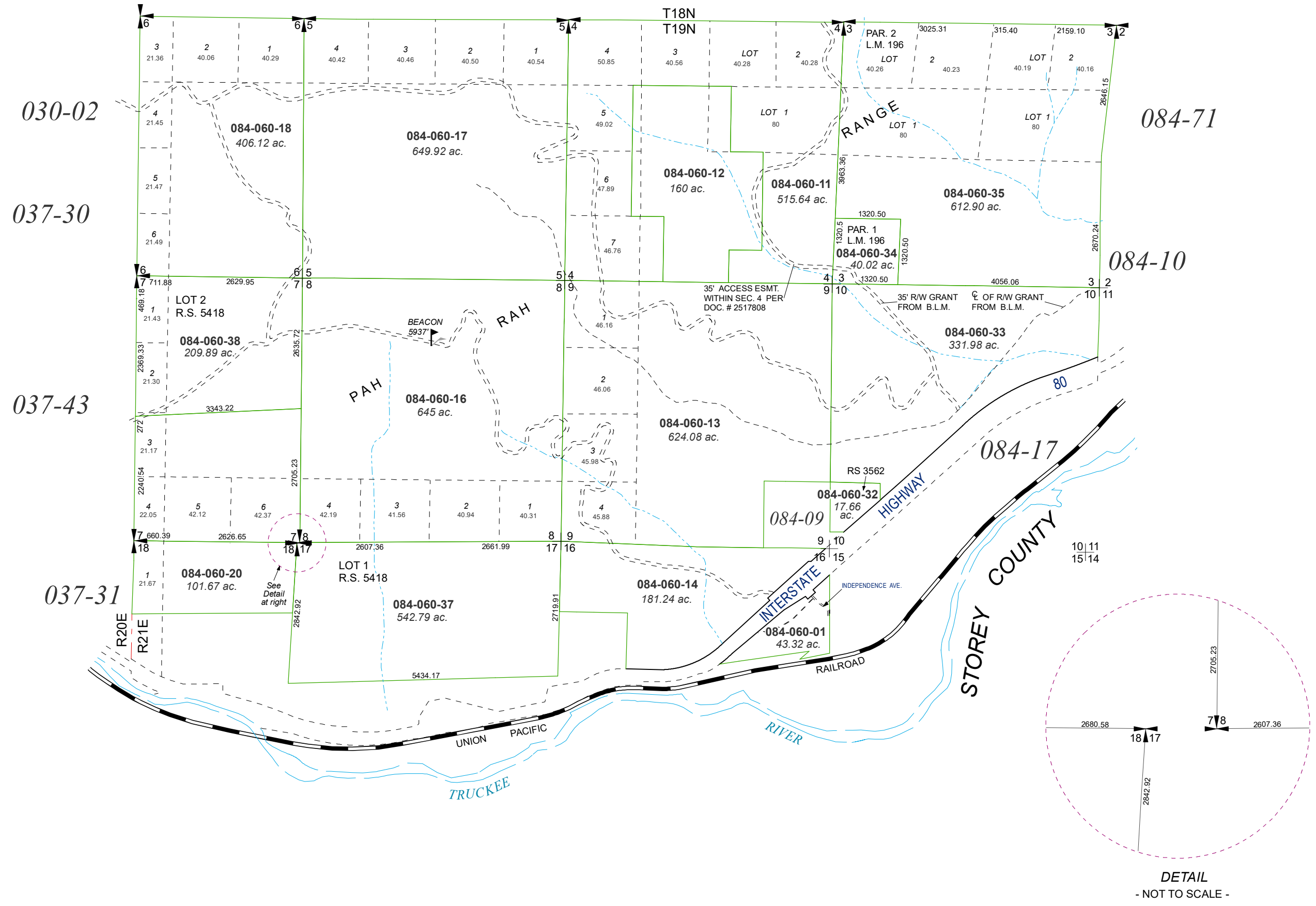


Feet
0 500 1,000 1,500 2,000
1 inch = 2,000 feet



created by: TWT 11/05/2009
updated: CFB 7/11/12 KSB 9/08/20
area previously shown on map(s):

NOTE: This map was prepared for the use of the Washoe County Assessor for assessment and illustrative purposes only. It does not represent a survey of the premises. No liability is assumed as to the sufficiency or accuracy of the data delineated hereon.



DETAIL
- NOT TO SCALE -