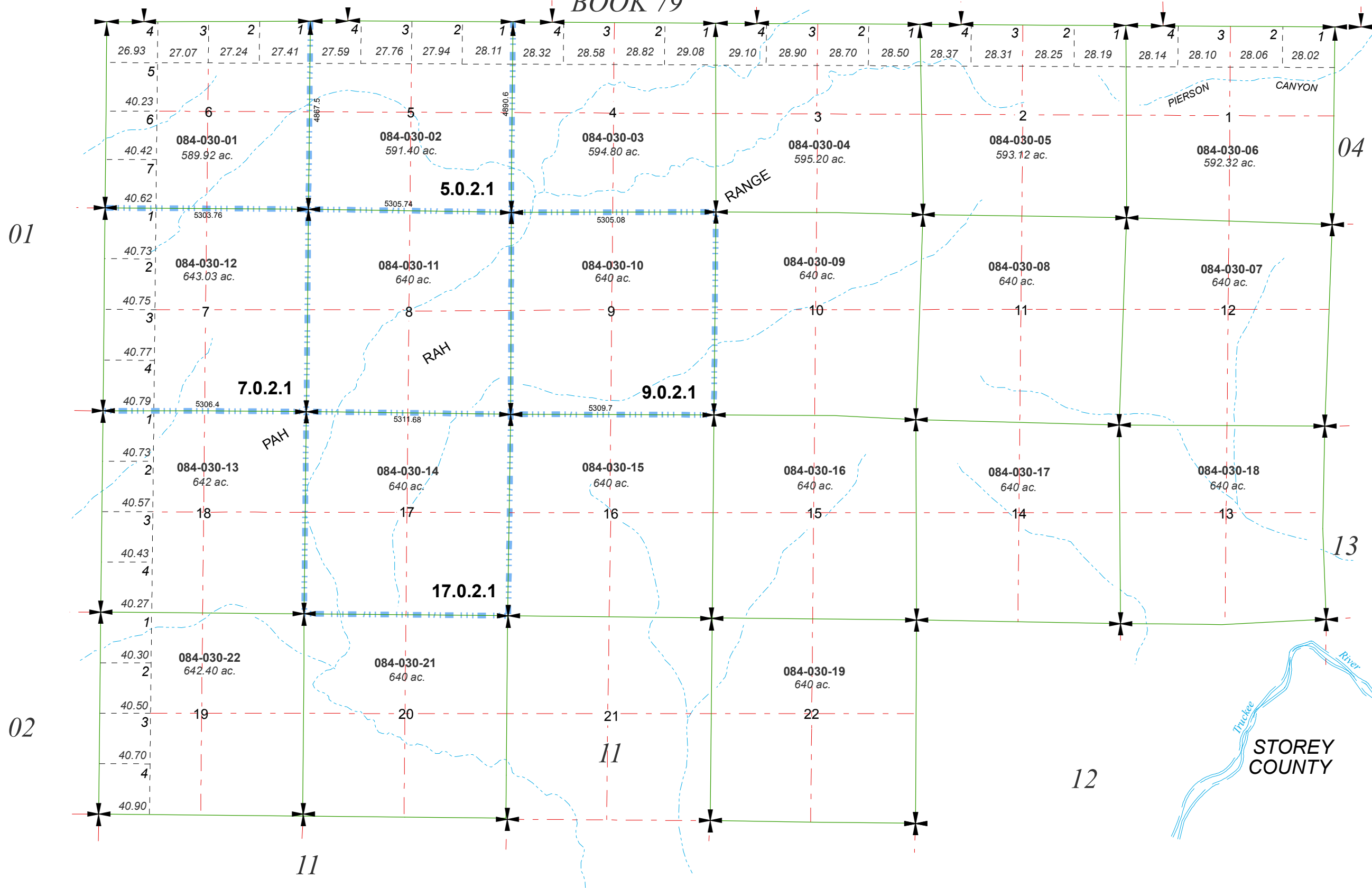


# PALOMINO VALLEY UNIT C DIVISION OF LAND MAP #13

SECTIONS 5, 7, 9 & 17, T20N - R22E

TOWNSHIP 20 NORTH - RANGE 22 EAST

BOOK 79

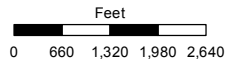


Assessor's Map Number

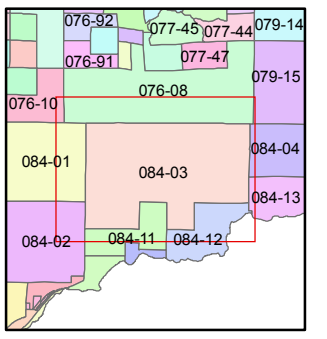
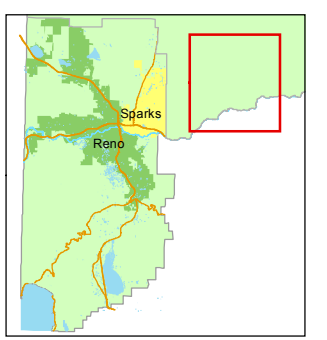
**084-03**

STATE OF NEVADA  
**WASHOE COUNTY**  
ASSESSOR'S OFFICE  
Joshua G. Wilson, Assessor

1001 East Ninth Street  
Building D  
Reno, Nevada 89512  
(775) 328-2231



1 inch = 2,640 feet



created by: CFB 02/27/2012

last updated: \_\_\_\_\_

area previously shown on map(s) \_\_\_\_\_

NOTE: This map was prepared for the use of the Washoe County Assessor for assessment and illustrative purposes only. It does not represent a survey of the premises. No liability is assumed as to the sufficiency or accuracy of the data delineated hereon.