

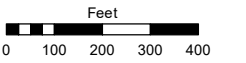
PORTION OF THE S1/2 SECTION 3, T17N - R20E

Assessor's Map Number

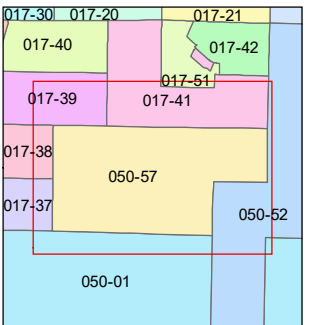
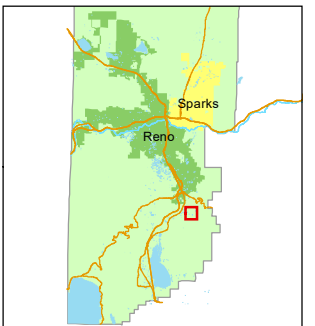
050-57

STATE OF NEVADA
WASHOE COUNTY
ASSESSOR'S OFFICE

1001 East Ninth Street, Building D
 Reno, Nevada 89512
 (775) 328-2231



1 inch = 400 feet



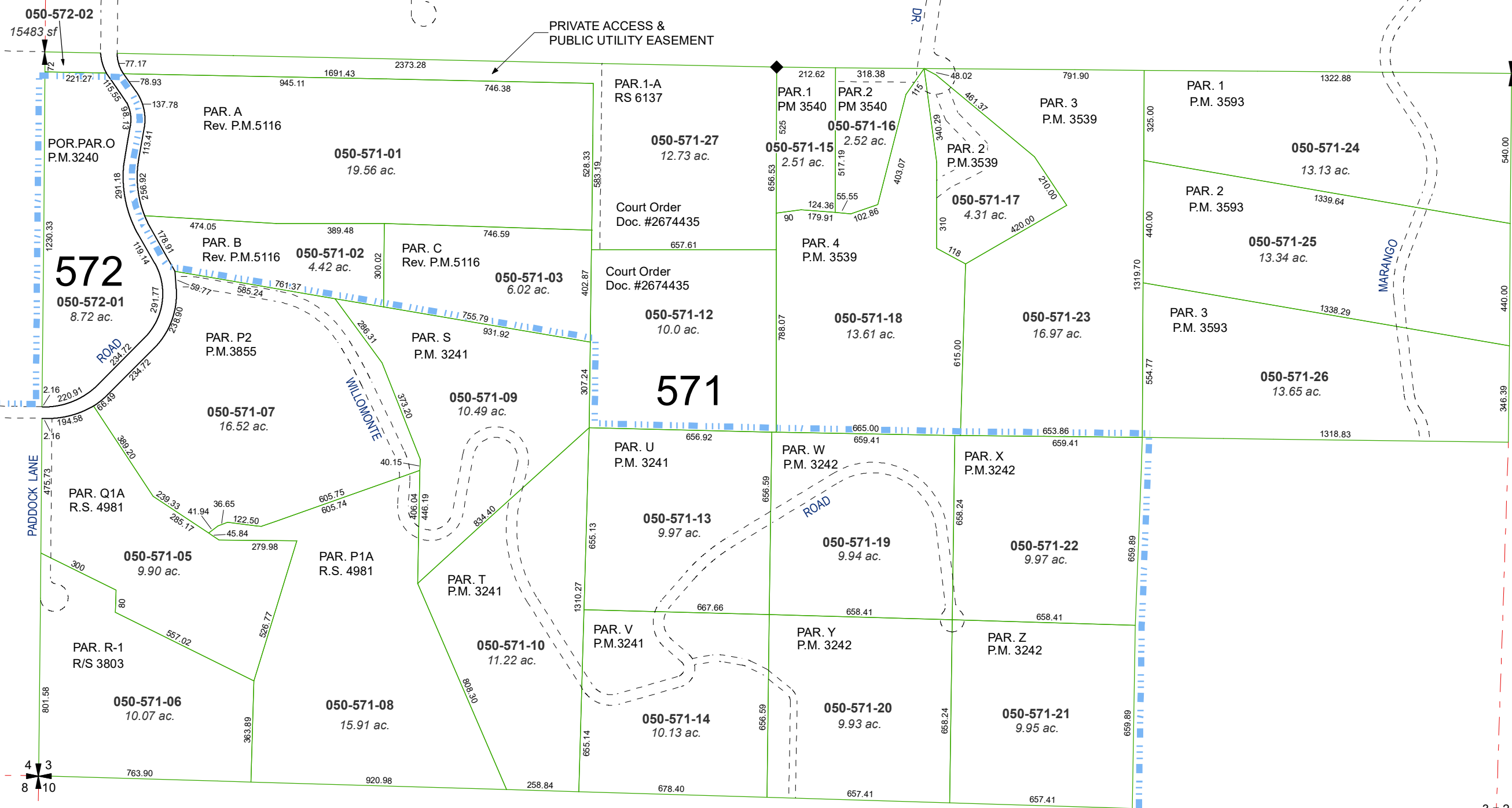
created by: CFB 03/24/2014

updated: SR 03/26/20

area previously shown on map(s):

050-52

NOTE: This map was prepared for the use of the Washoe County Assessor for assessment and illustrative purposes only. It does not represent a survey of the premises. No liability is assumed as to the sufficiency or accuracy of the data delineated hereon.



MAP OF DIVISION INTO LARGE PARCELS NO. 158

4 3
8 10

3 2
10 11