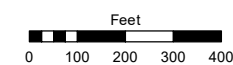
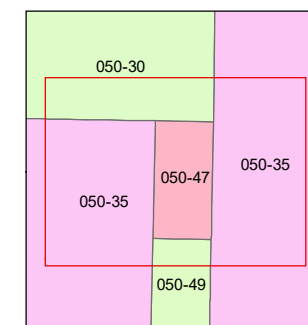
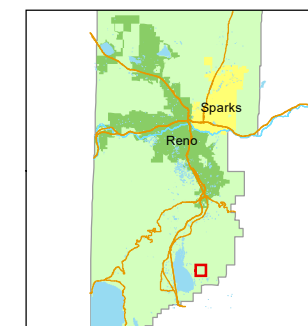


STATE OF NEVADA  
**WASHOE COUNTY**  
**ASSESSOR'S OFFICE**

1001 East Ninth Street, Building D  
Reno, Nevada 89512  
(775) 328-2231



1 inch = 400 feet



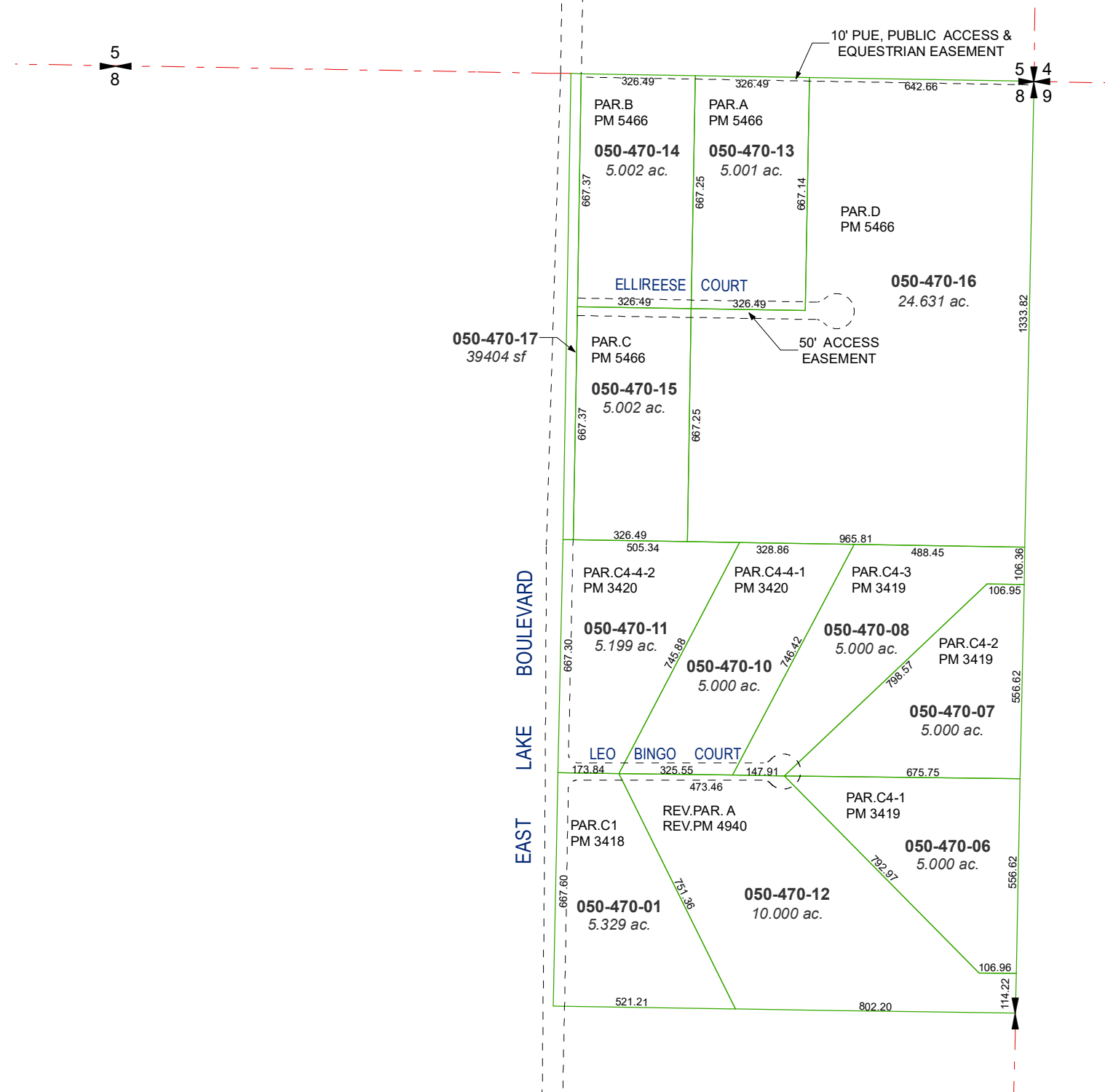
created by: SR 07/11/2020

updated: SR 04/26/21

area previously shown on map(s):

050-35

NOTE: This map was prepared for the use of the Washoe County Assessor for assessment and illustrative purposes only. It does not represent a survey of the premises. No liability is assumed as to the sufficiency or accuracy of the data delineated hereon.



THE E 1/2 OF NE 1/4 SECTION 8  
T16N - R20E