

# (#974) NEW WASHOE CITY SUB. NO. 5

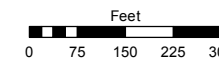
PORTION OF N½ SECTION 5, T16N - R20E

Assessor's Map Number

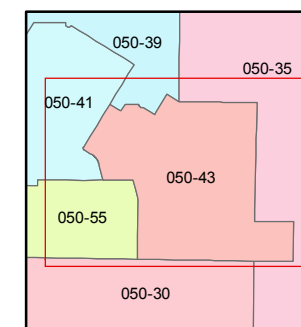
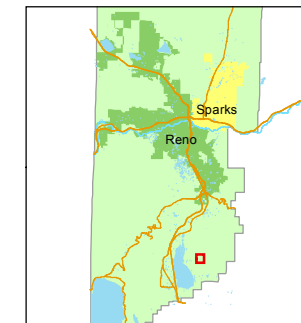
**050-43**

STATE OF NEVADA  
**WASHOE COUNTY**  
 ASSESSOR'S OFFICE  
 Michael E. Clark, Assessor

1001 East Ninth Street  
 Building D  
 Reno, Nevada 89512  
 (775) 328-2231



1 inch = 300 feet



created by: KSB 09/09/2010

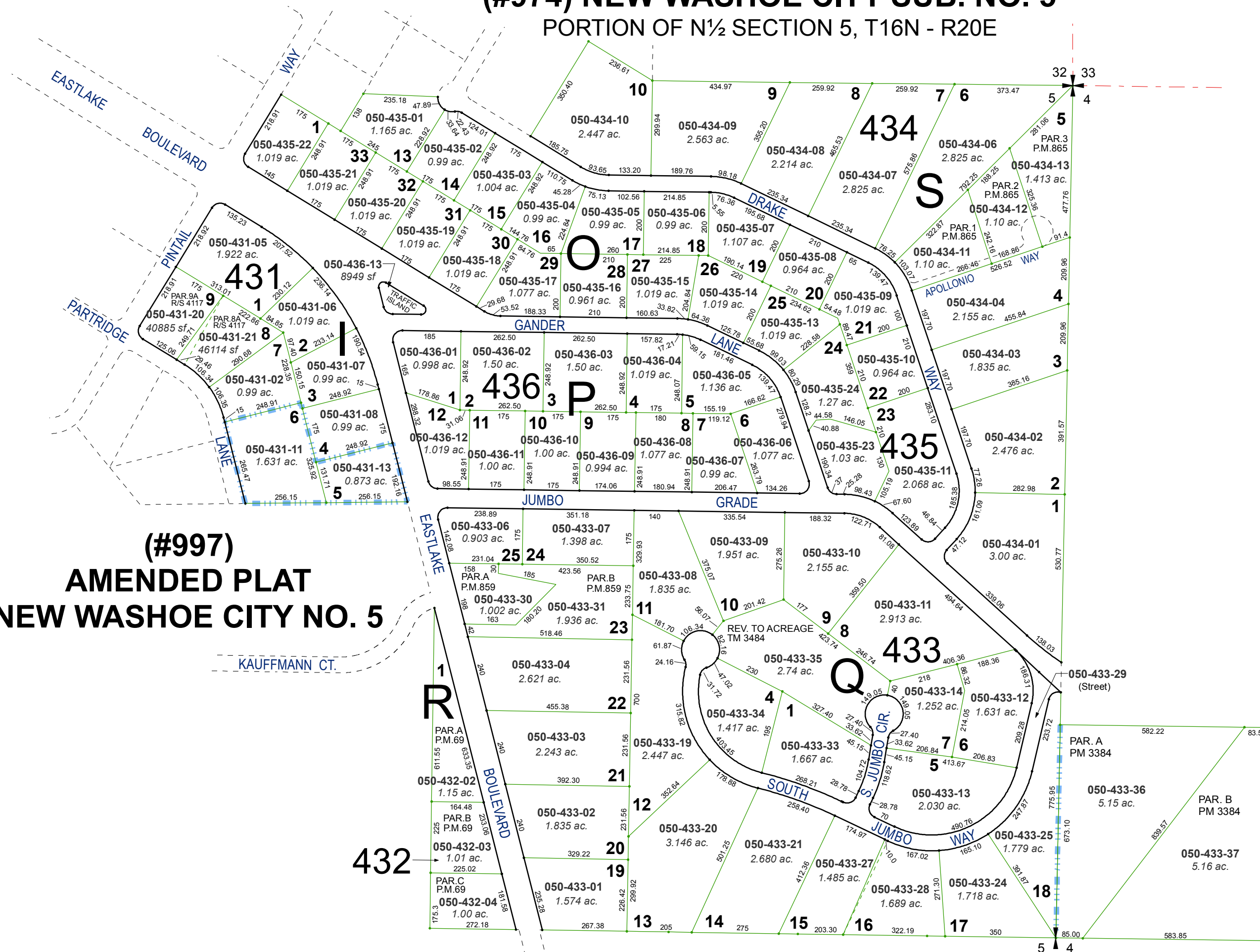
last updated: CFB 10/7/14 SR 12/15/17

area previously shown on map(s)

050-55

NOTE: This map was prepared for the use of the Washoe County Assessor for assessment and illustrative purposes only. It does not represent a survey of the premises. No liability is assumed as to the sufficiency or accuracy of the data delineated hereon.

# (#997) AMENDED PLAT NEW WASHOE CITY NO. 5



432

433

434

435

436