

PORTION OF NW1/4 OF SECTION 24 &
 PORTION OF E1/2 OF SECTION 23
 T17N - R19E

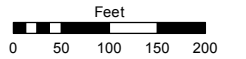
**(#429)
 WASHOE CITY
 ANNEX**

Assessor's Map Number

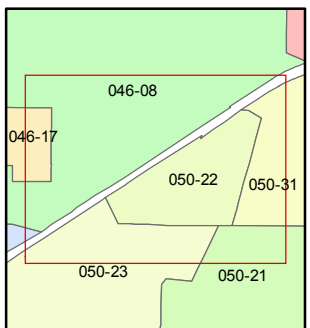
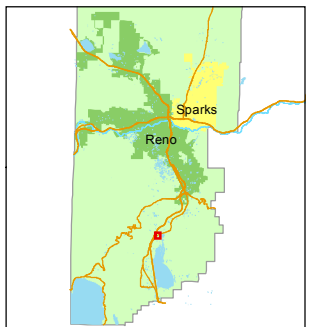
050-22

STATE OF NEVADA
WASHOE COUNTY
 ASSESSOR'S OFFICE
 Michael E. Clark, Assessor

1001 East Ninth Street
 Building D
 Reno, Nevada 89512
 (775) 328-2231



1 inch = 200 feet



created by: CFB 06/05/2015

last updated: SR 6/21/17.v2

area previously shown on map(s)

NOTE: This map was prepared for the use of the Washoe County Assessor for assessment and illustrative purposes only. It does not represent a survey of the premises. No liability is assumed as to the sufficiency or accuracy of the data delineated hereon.

