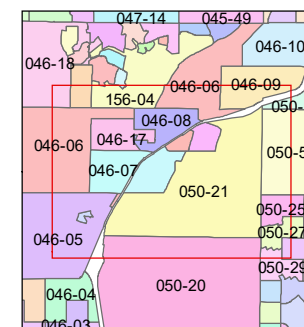
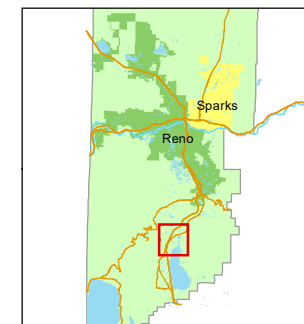




1 inch = 1,000 feet



created by: CFB 05/12/2010

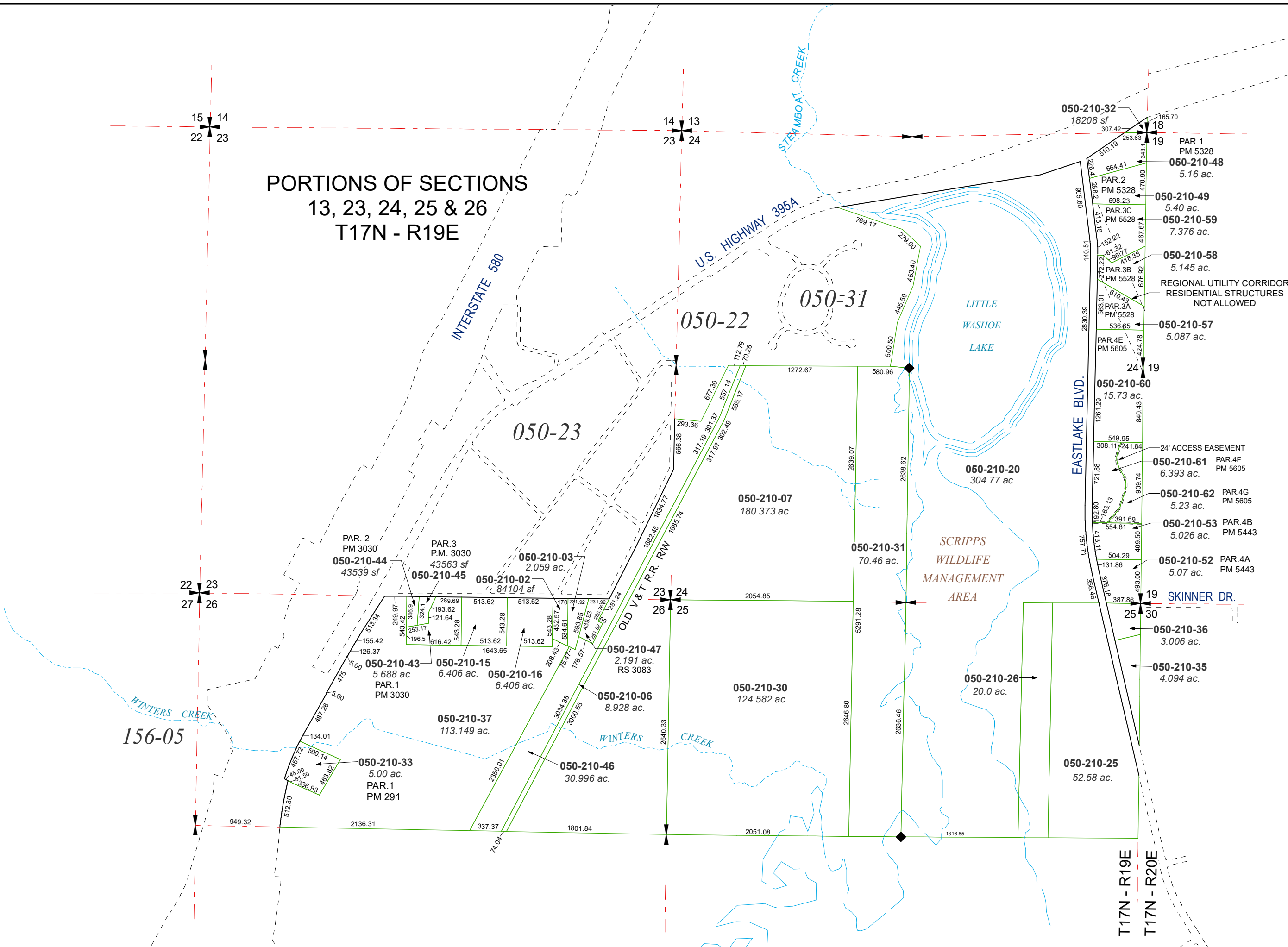
updated: SR 02/13/18 SR 12/23/19

SR 06/21/21 SR 06/15/22

area previously shown on map(s):

NOTE: This map was prepared for the use of the Washoe County Assessor for assessment and illustrative purposes only. It does not represent a survey of the premises. No liability is assumed as to the sufficiency or accuracy of the data delineated hereon.

PORTIONS OF SECTIONS  
13, 23, 24, 25 & 26  
T17N - R19E



T17N - R19E  
T17N - R20E