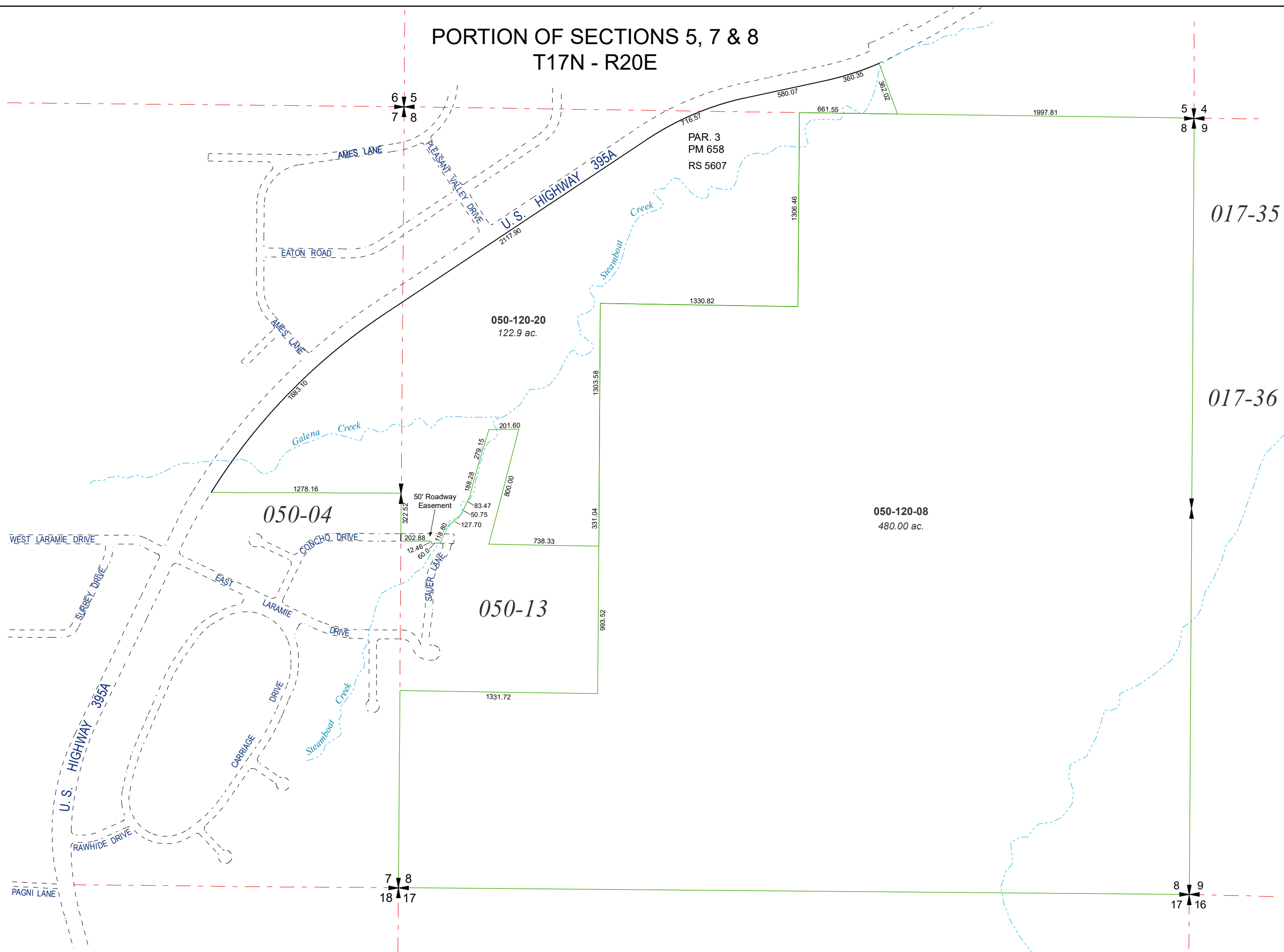
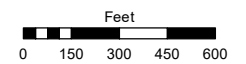


PORTION OF SECTIONS 5, 7 & 8
T17N - R20E

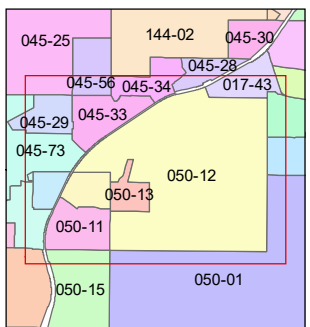
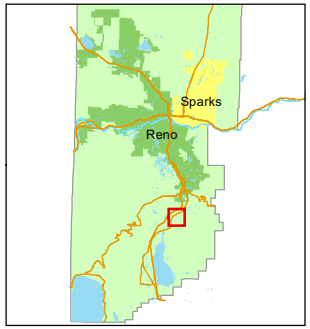


Assessor's Map Number
050-12

STATE OF NEVADA
WASHOE COUNTY
ASSESSOR'S OFFICE
1001 East Ninth Street, Building D
Reno, Nevada 89512
(775) 328-2231



1 inch = 600 feet



created by: KSB 11/04/2021

updated: _____

area previously shown on map(s):
050-01

NOTE: This map was prepared for the use of the Washoe County Assessor for assessment and illustrative purposes only. It does not represent a survey of the premises. No liability is assumed as to the sufficiency or accuracy of the data delineated hereon.