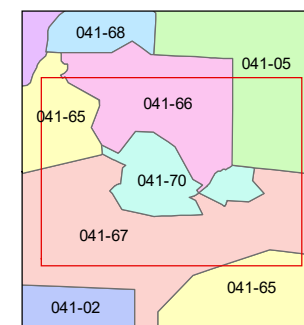
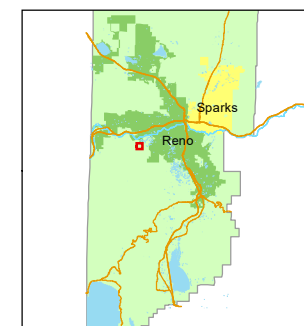


1 inch = 200 feet



created by: SR 07/07/2022

updated: \_\_\_\_\_

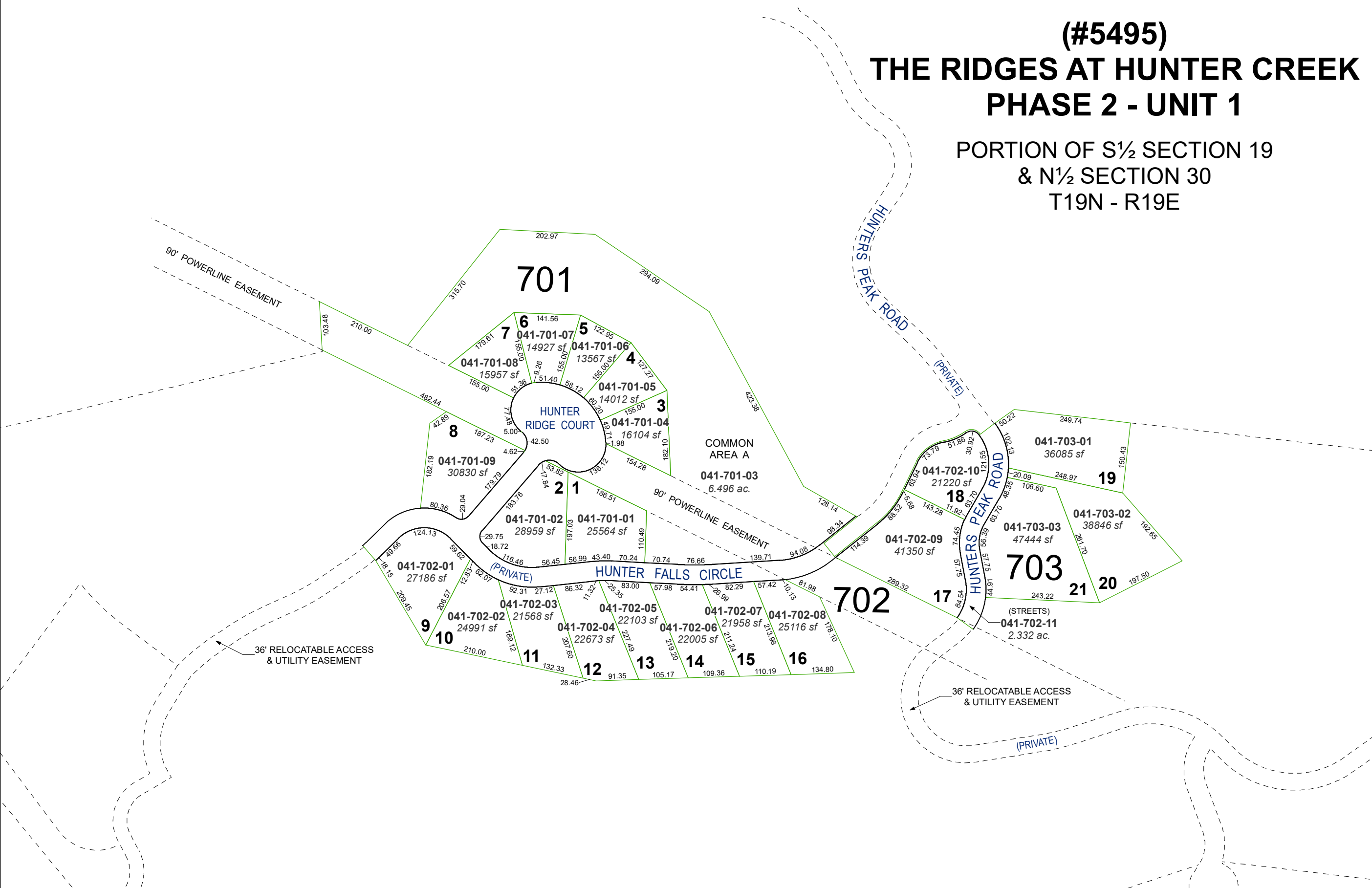
area previously shown on map(s):

041-65, 66 & 67

NOTE: This map was prepared for the use of the Washoe County Assessor for assessment and illustrative purposes only. It does not represent a survey of the premises. No liability is assumed as to the sufficiency or accuracy of the data delineated hereon.

# (#5495) THE RIDGES AT HUNTER CREEK PHASE 2 - UNIT 1

PORTION OF S½ SECTION 19  
& N½ SECTION 30  
T19N - R19E



90' POWERLINE EASEMENT

HUNTERS PEAK ROAD (PRIVATE)

COMMON AREA A  
041-701-03  
6.496 ac.

HUNTER RIDGE COURT

HUNTER FALLS CIRCLE

HUNTERS PEAK ROAD (PRIVATE)

36' RELOCATABLE ACCESS & UTILITY EASEMENT

36' RELOCATABLE ACCESS & UTILITY EASEMENT

(PRIVATE)