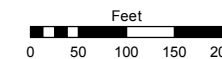


Assessor's Map Number

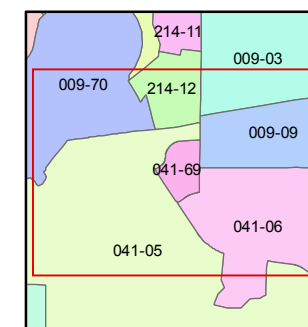
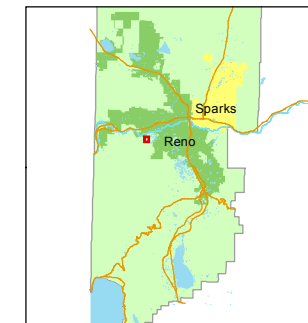
041-69

STATE OF NEVADA
WASHOE COUNTY
ASSESSOR'S OFFICE
Michael E. Clark, Assessor

1001 East Ninth Street
Building D
Reno, Nevada 89512
(775) 328-2231



1 inch = 200 feet



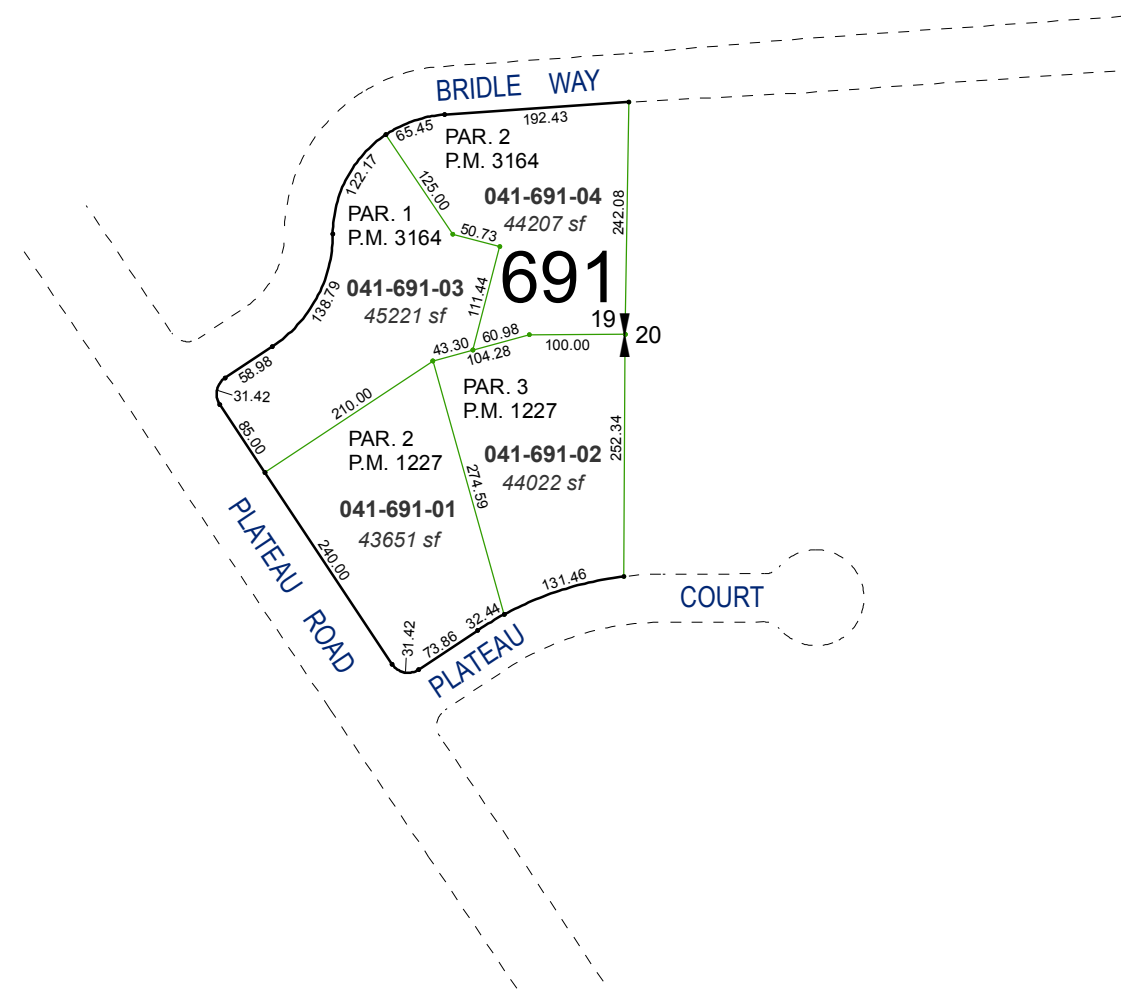
created by: EMG 1/16/2015

last updated: _____

area previously shown on map(s)

041-06

PORTION OF THE EAST 1/2 OF SEC. 19
T19N - R19E



NOTE: This map was prepared for the use of the Washoe County Assessor for assessment and illustrative purposes only. It does not represent a survey of the premises. No liability is assumed as to the sufficiency or accuracy of the data delineated hereon.