

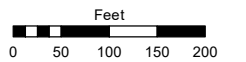
(# 4833) THE RIDGES AT HUNTER CREEK PHASE 1

A COMMON INTEREST COMMUNITY
PORTIONS OF S½ SECTION 19
& N½ SECTION 30
T19N - R19E

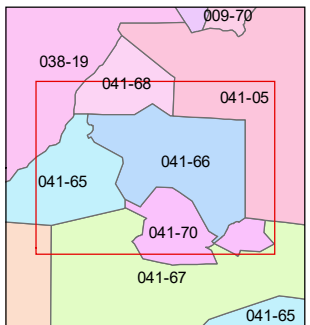
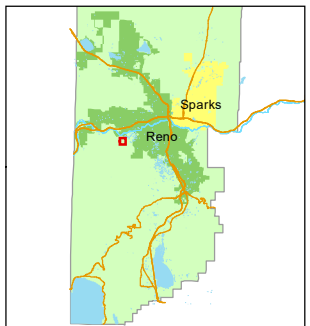
Assessor's Map Number

041-66

STATE OF NEVADA
WASHOE COUNTY
ASSESSOR'S OFFICE
1001 East Ninth Street, Building D
Reno, Nevada 89512
(775) 328-2231



1 inch = 200 feet



created by: CFB 08/16/2013

updated: SR 01/14/21 SR 07/06/22

area previously shown on map(s):
041-65

NOTE: This map was prepared for the use of the Washoe County Assessor for assessment and illustrative purposes only. It does not represent a survey of the premises. No liability is assumed as to the sufficiency or accuracy of the data delineated hereon.

