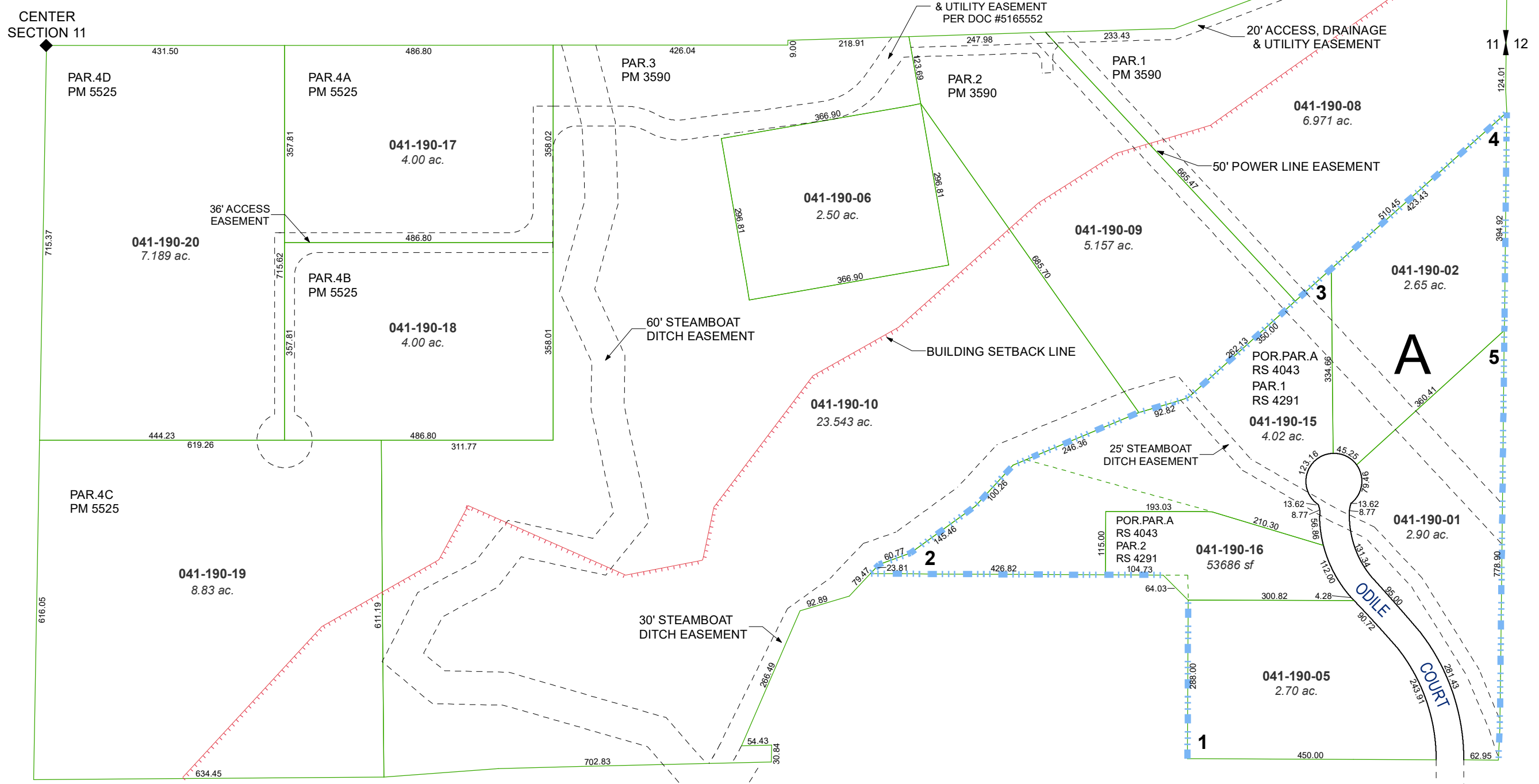


PORTION OF E 1/2 SECTION 11  
T18N - R19E



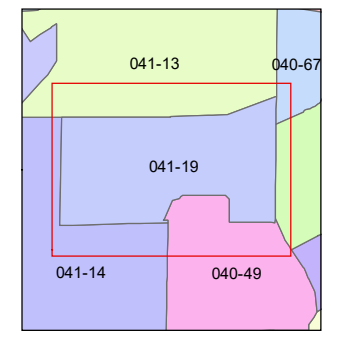
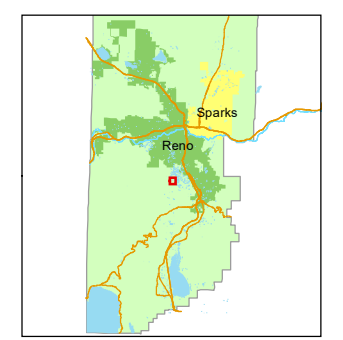
**(#1705)**  
**BRADY SUBDIVISION**

Assessor's Map Number  
**041-19**

STATE OF NEVADA  
**WASHOE COUNTY**  
**ASSESSOR'S OFFICE**  
1001 East Ninth Street, Building D  
Reno, Nevada 89512  
(775) 328-2231



Feet  
0 50 100 150 200  
1 inch = 200 feet



created by: SR 06/11/2021  
updated: \_\_\_\_\_  
area previously shown on map(s): \_\_\_\_\_

NOTE: This map was prepared for the use of the Washoe County Assessor for assessment and illustrative purposes only. It does not represent a survey of the premises. No liability is assumed as to the sufficiency or accuracy of the data delineated hereon.