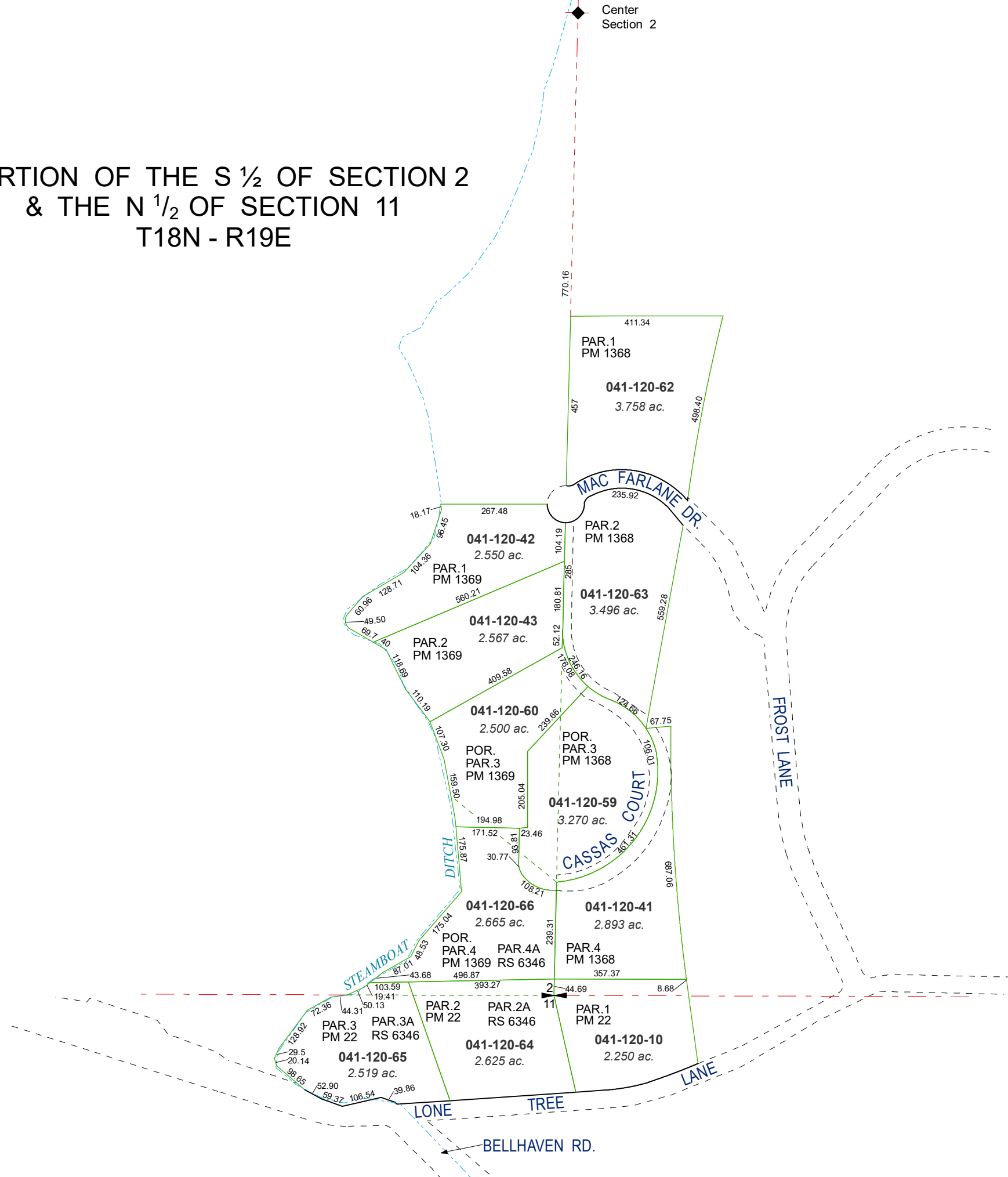


PORTION OF THE S 1/2 OF SECTION 2
& THE N 1/2 OF SECTION 11
T18N - R19E

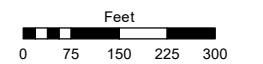


Assessor's Map Number

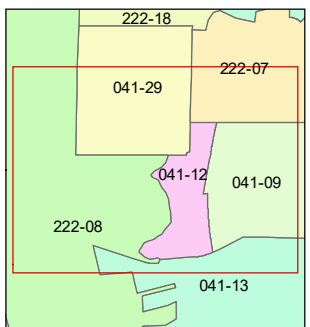
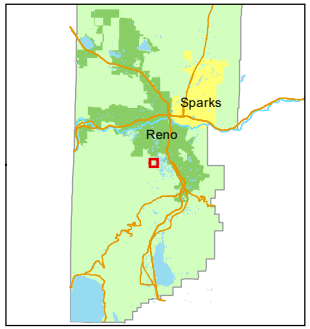
041-12

STATE OF NEVADA
WASHOE COUNTY
ASSESSOR'S OFFICE

1001 East Ninth Street, Building D
Reno, Nevada 89512
(775) 328-2231



1 inch = 300 feet



created by: JRA 3/29/2022

updated: _____

area previously shown on map(s): _____

NOTE: This map was prepared for the use of the Washoe County Assessor for assessment and illustrative purposes only. It does not represent a survey of the premises. No liability is assumed as to the sufficiency or accuracy of the data delineated hereon.