

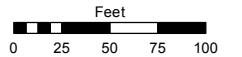
PORTION OF E 1/2 OF SECTION 36
T19N - R19E

Assessor's Map Number

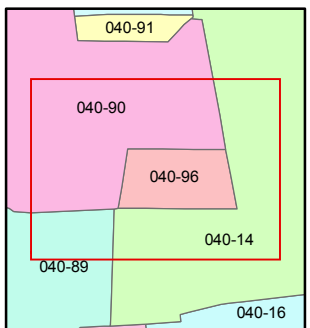
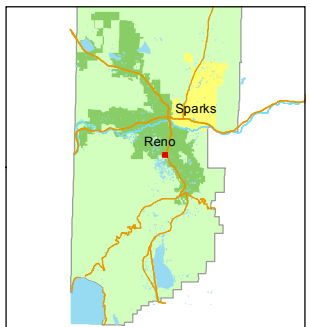
040-96

STATE OF NEVADA
WASHOE COUNTY
ASSESSOR'S OFFICE
Joshua G. Wilson, Assessor

1001 East Ninth Street
Building D
Reno, Nevada 89512
(775) 328-2231



1 inch = 100 feet



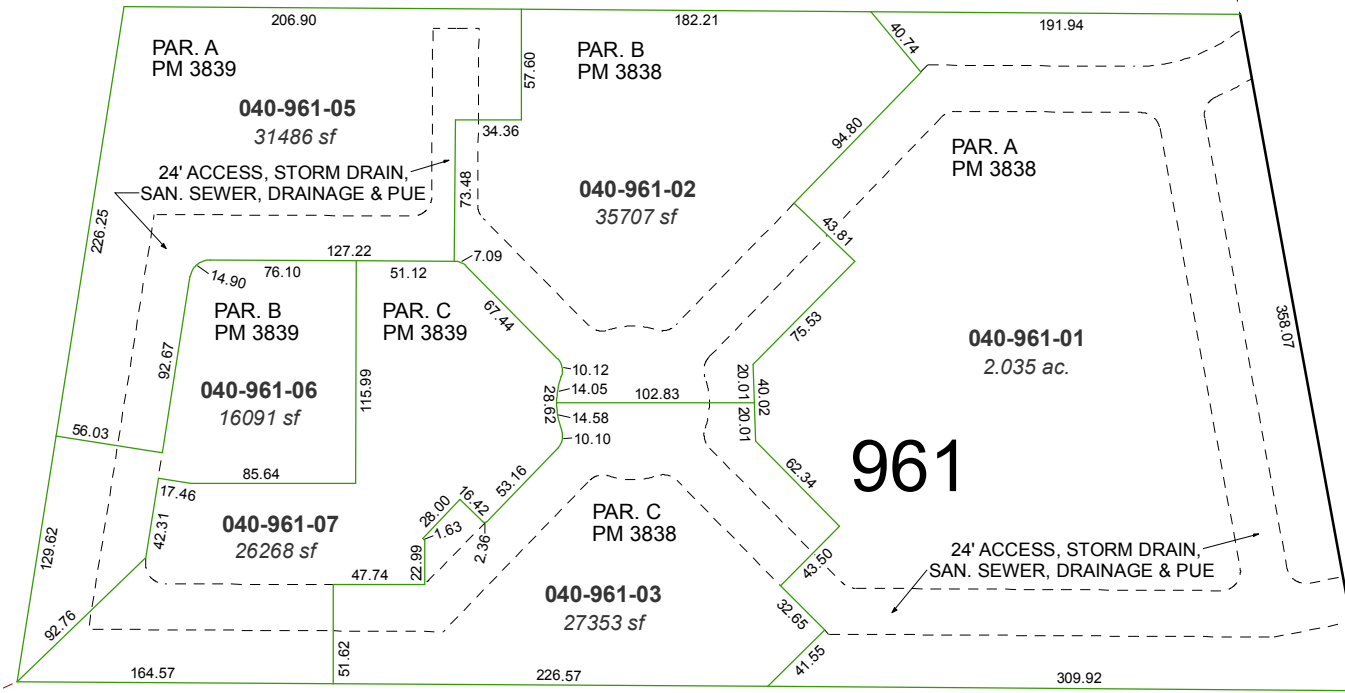
created by: KSB 6/11/2012

last updated: _____

area previously shown on map(s)

040-14

NOTE: This map was prepared for the use of the Washoe County Assessor for assessment and illustrative purposes only. It does not represent a survey of the premises. No liability is assumed as to the sufficiency or accuracy of the data delineated hereon.



GPS #9 "WINDY HILL"
N=14,845,158.315
E= 2,280,171.768

S64-40-35W 3,371.92