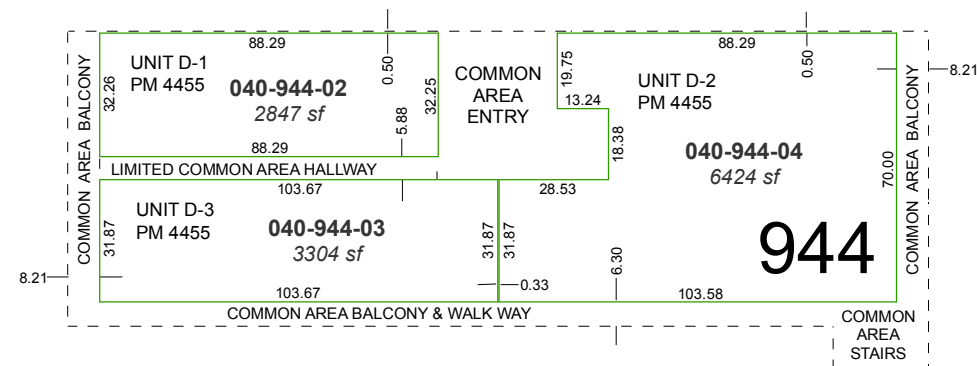


PORTION OF NE1/4 SECTION 36
T19N - R19E

SECOND FLOOR



NOTE: LIMITED COMMON AREA HALLWAY IS EXCLUSIVE TO UNITS D-1 AND D-3

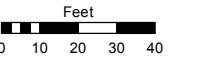
SIERRA ROSE DRIVE

Assessor's Map Number

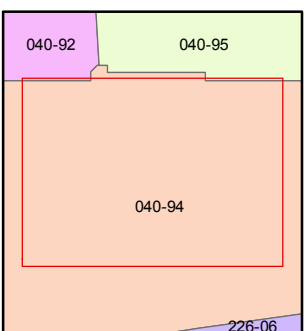
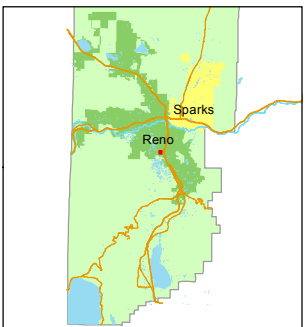
040-94-S2

STATE OF NEVADA
WASHOE COUNTY
ASSESSOR'S OFFICE
Michael E. Clark, Assessor

1001 East Ninth Street
Building D
Reno, Nevada 89512
(775) 328-2231



1 inch = 50 feet



created by: SR 01/17/2018

last updated: _____

area previously shown on map(s)

NOTE: This map was prepared for the use of the Washoe County Assessor for assessment and illustrative purposes only. It does not represent a survey of the premises. No liability is assumed as to the sufficiency or accuracy of the data delineated hereon.