

QUAIL CORNERS, L.L.C.

PORTION OF N 1/2 SECTION 36
T19N - R19E

SOUTH McCARRAN BOULEVARD

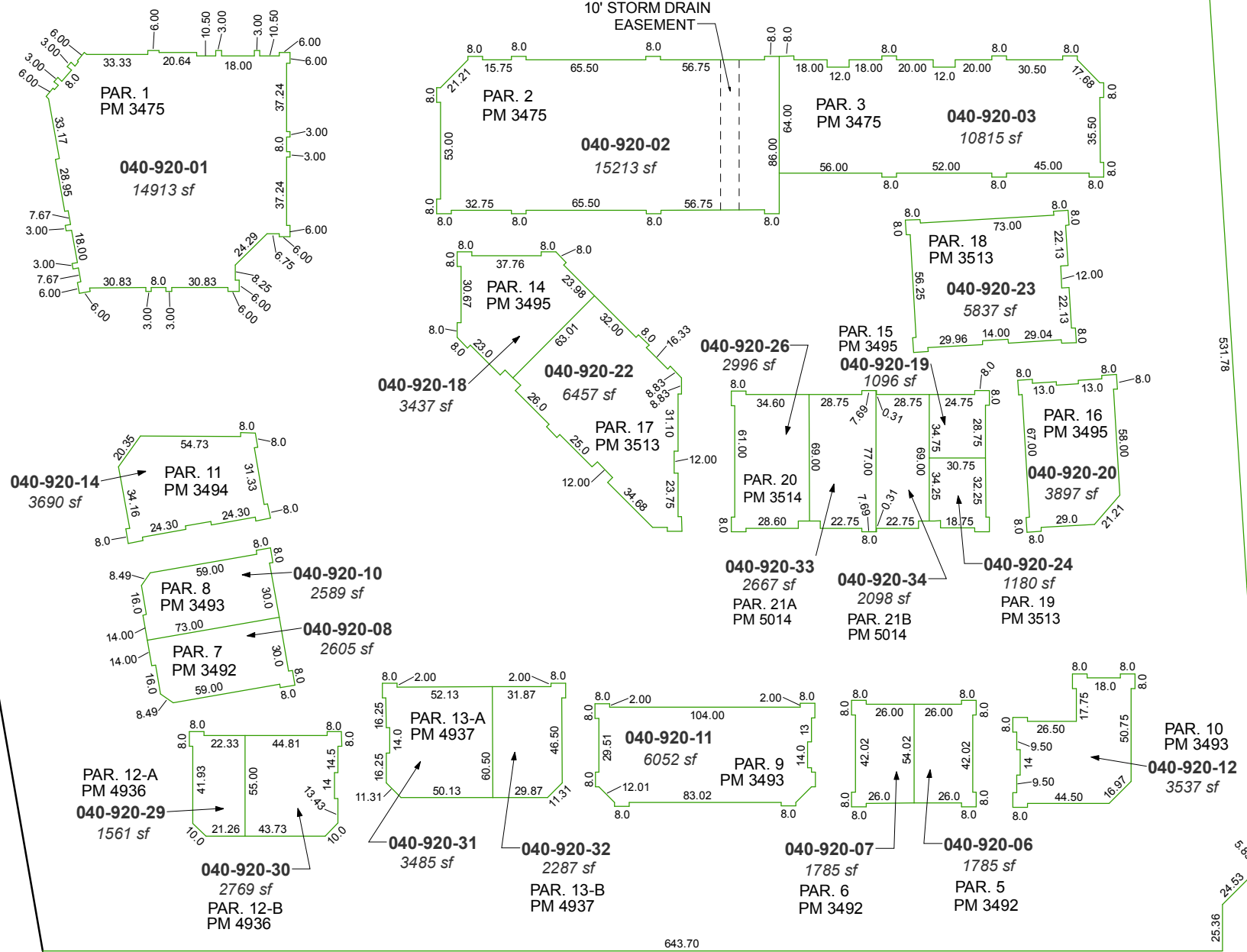
POR. PAR. 4
PM 3514

POR. PAR. 1
RS 3829

040-920-28
6.857 ac.

COMMON AREA
PUE, ACCESS AND
LANDSCAPE AREA

25
36
N59-11-08W
78.68'

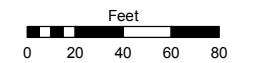


Assessor's Map Number

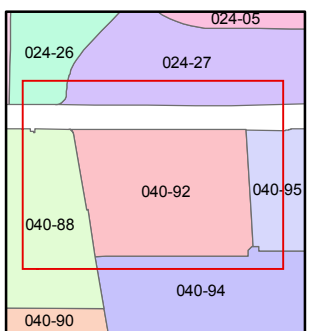
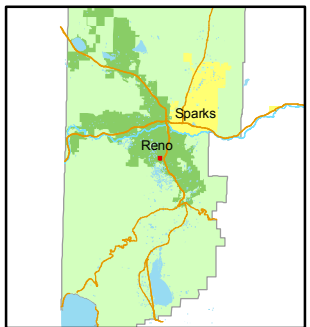
040-92

STATE OF NEVADA
WASHOE COUNTY
ASSESSOR'S OFFICE
Joshua G. Wilson, Assessor

1001 East Ninth Street
Building D
Reno, Nevada 89512
(775) 328-2231



1 inch = 80 feet



created by: KSB 3/01/10

last updated: _____

area previously shown on map(s)

040-08

NOTE: This map was prepared for the use of the Washoe County Assessor for assessment and illustrative purposes only. It does not represent a survey of the premises. No liability is assumed as to the sufficiency or accuracy of the data delineated hereon.