

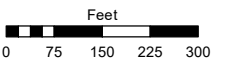
PORTION OF SECTION 36  
T19N - R19E

Assessor's Map Number

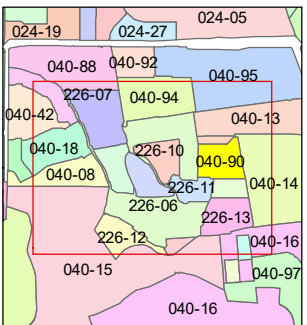
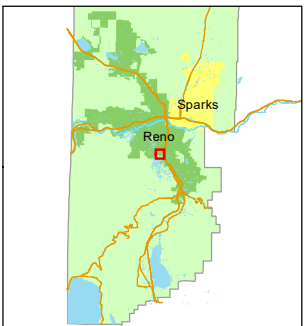
**040-90**

STATE OF NEVADA  
**WASHOE COUNTY**  
ASSESSOR'S OFFICE

1001 East Ninth Street, Building D  
Reno, Nevada 89512  
(775) 328-2231



1 inch = 300 feet



created by: KSB 06/07/2012

updated: EMG 07/08/16 SR 08/08/17

SR 04/22/20 SR 12/23/20 SR 07/28/21

area previously shown on map(s):

040-08 040-14

NOTE: This map was prepared for the use of the Washoe County Assessor for assessment and illustrative purposes only. It does not represent a survey of the premises. No liability is assumed as to the sufficiency or accuracy of the data delineated hereon.

