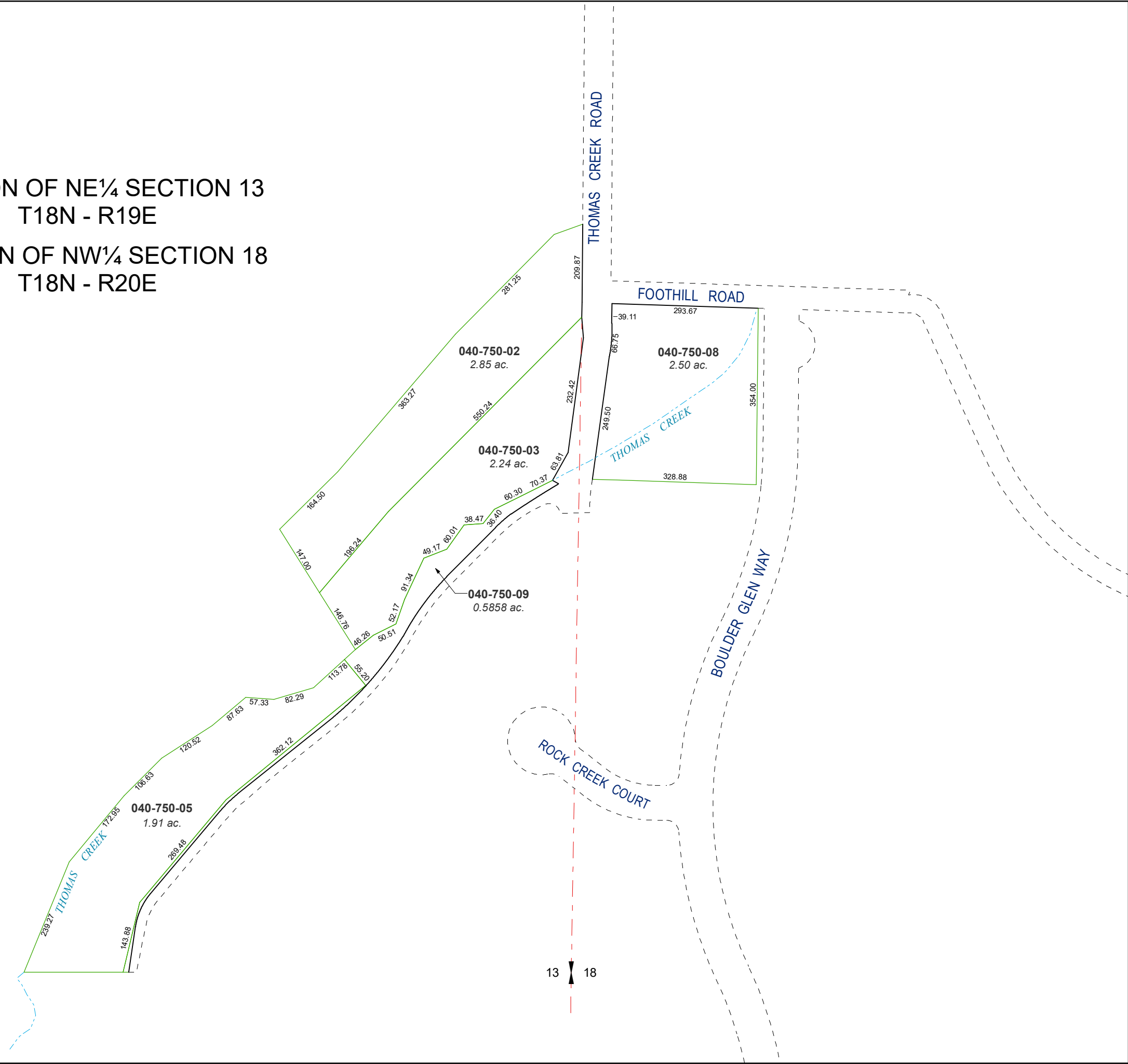


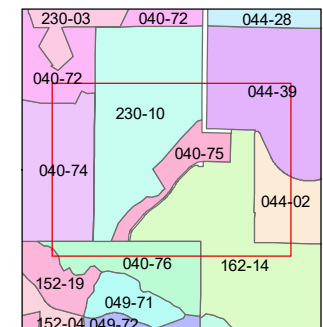
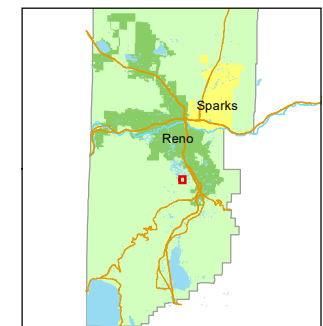
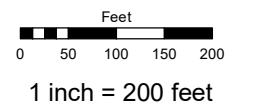
PORTION OF NE¼ SECTION 13
T18N - R19E
PORTION OF NW¼ SECTION 18
T18N - R20E



13 18

Assessor's Map Number
040-75

STATE OF NEVADA
WASHOE COUNTY
ASSESSOR'S OFFICE
1001 East Ninth Street, Building D
Reno, Nevada 89512
(775) 328-2231



created by: SR 01/02/2018
updated: SR 08/20/19

area previously shown on map(s):

NOTE: This map was prepared for the use of the Washoe County Assessor for assessment and illustrative purposes only. It does not represent a survey of the premises. No liability is assumed as to the sufficiency or accuracy of the data delineated hereon.