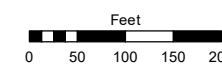
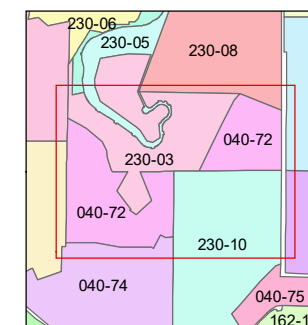
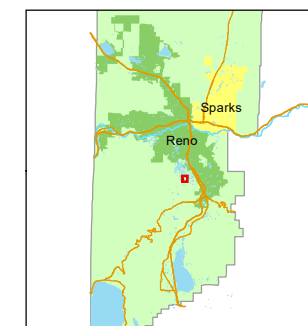


STATE OF NEVADA  
**WASHOE COUNTY**  
**ASSESSOR'S OFFICE**

1001 East Ninth Street, Building D  
Reno, Nevada 89512  
(775) 328-2231



1 inch = 200 feet



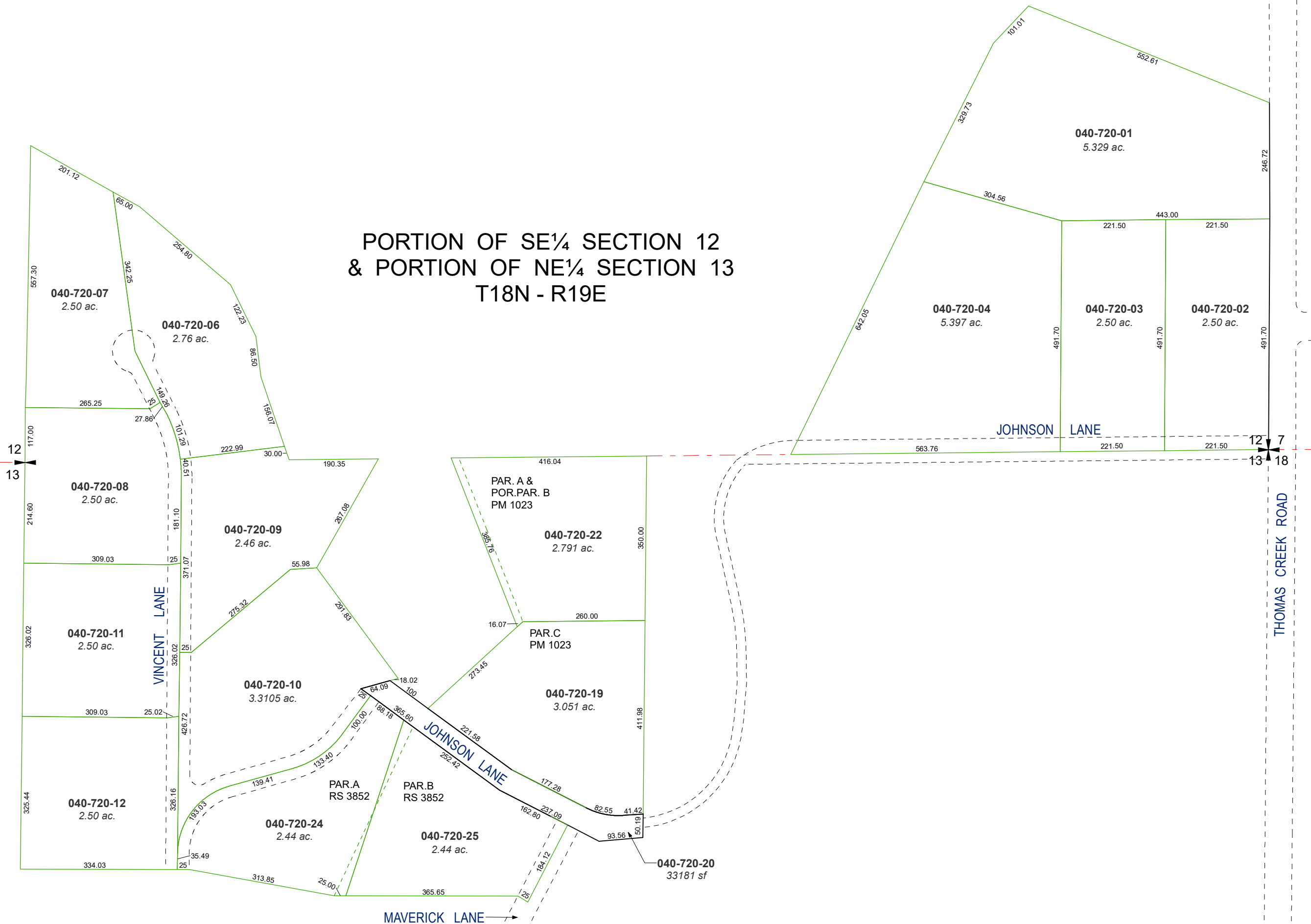
created by: SR 01/02/2018

updated: SR 08/20/19

area previously shown on map(s):

NOTE: This map was prepared for the use of the Washoe County Assessor for assessment and illustrative purposes only. It does not represent a survey of the premises. No liability is assumed as to the sufficiency or accuracy of the data delineated hereon.

**PORTION OF SE¼ SECTION 12  
& PORTION OF NE¼ SECTION 13  
T18N - R19E**



12  
13

12  
13

7  
18  
THOMAS CREEK ROAD