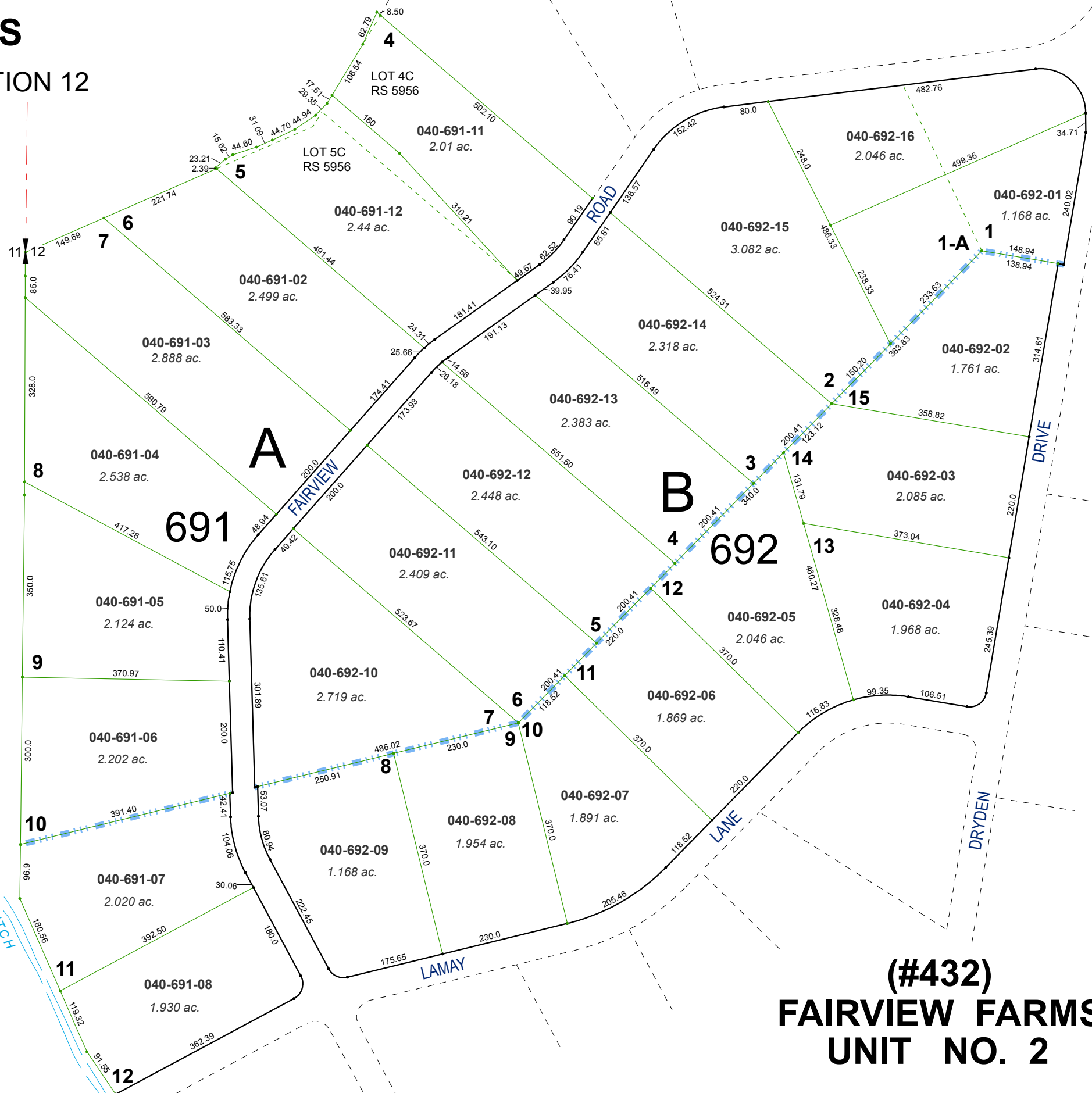


**(#325)**  
**FAIRVIEW FARMS**  
 PORTION OF THE W1/2 SECTION 12  
 T18N - R19E

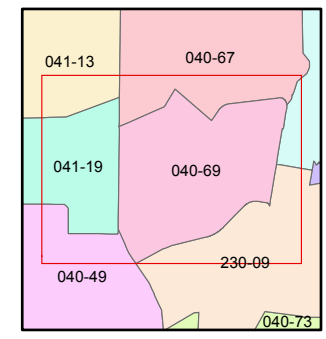
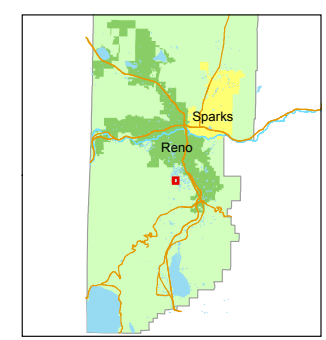
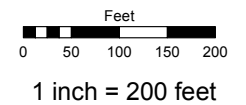


**(#432)**  
**FAIRVIEW FARMS**  
**UNIT NO. 2**

Assessor's Map Number  
**040-69**

STATE OF NEVADA  
**WASHOE COUNTY**  
**ASSESSOR'S OFFICE**  
 Michael E. Clark, Assessor

1001 East Ninth Street  
 Building D  
 Reno, Nevada 89512  
 (775) 328-2231



created by: JFK 10/31/2017  
 last updated: SR 5/14/18

area previously shown on map(s)  
 \_\_\_\_\_

NOTE: This map was prepared for the use of the Washoe County Assessor for assessment and illustrative purposes only. It does not represent a survey of the premises. No liability is assumed as to the sufficiency or accuracy of the data delineated hereon.