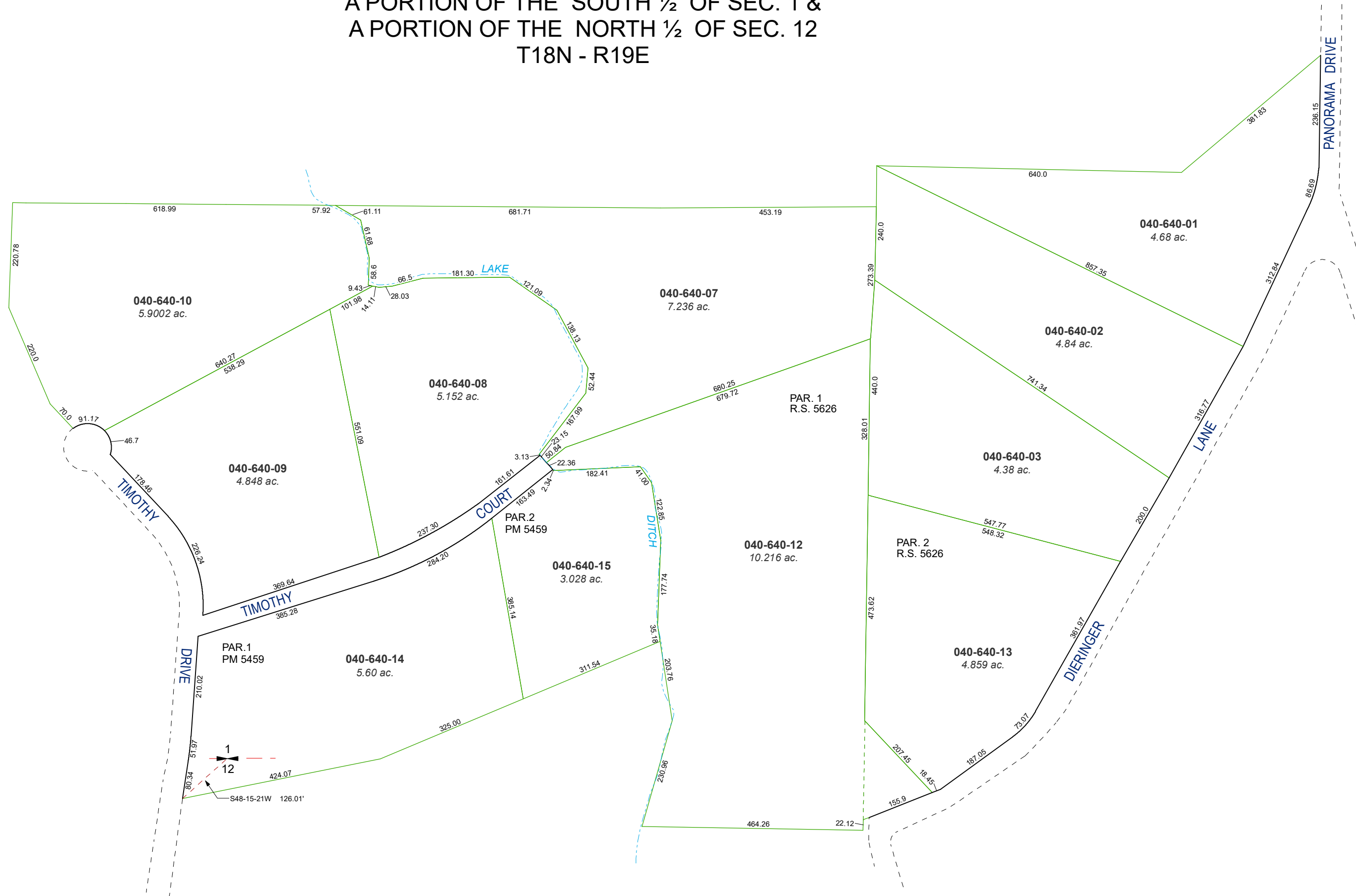


A PORTION OF THE SOUTH 1/2 OF SEC. 1 &
 A PORTION OF THE NORTH 1/2 OF SEC. 12
 T18N - R19E

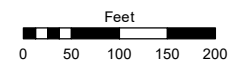


Assessor's Map Number

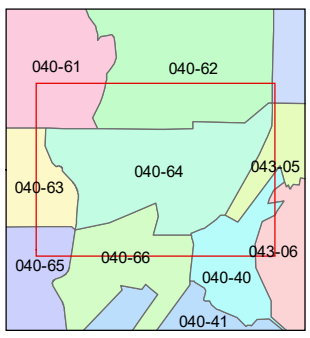
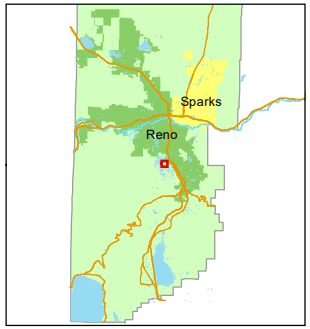
040-64

STATE OF NEVADA
WASHOE COUNTY
 ASSESSOR'S OFFICE

1001 East Ninth Street, Building D
 Reno, Nevada 89512
 (775) 328-2231



1 inch = 200 feet



created by: EMG 09/23/2014

updated: EMG 04/14/15 SR 03/26/20

area previously shown on map(s):

NOTE: This map was prepared for the use of the Washoe County Assessor for assessment and illustrative purposes only. It does not represent a survey of the premises. No liability is assumed as to the sufficiency or accuracy of the data delineated hereon.