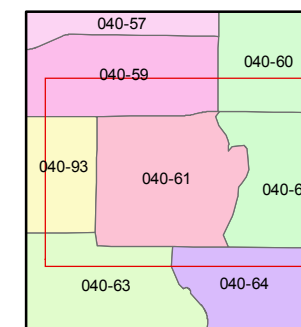
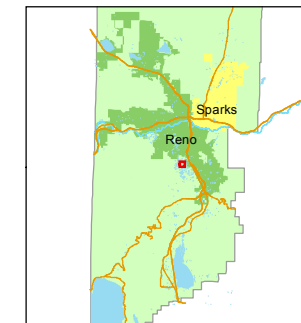


1 inch = 200 feet



created by: SR 12/29/2017

last updated: \_\_\_\_\_

area previously shown on map(s) \_\_\_\_\_

NOTE: This map was prepared for the use of the Washoe County Assessor for assessment and illustrative purposes only. It does not represent a survey of the premises. No liability is assumed as to the sufficiency or accuracy of the data delineated hereon.

PORTION OF SW1/4 SECTION 1  
T18N - R19E

**(#899)**  
**LAKESIDE MEADOWS**  
**UNIT NO. 3**

