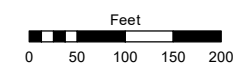
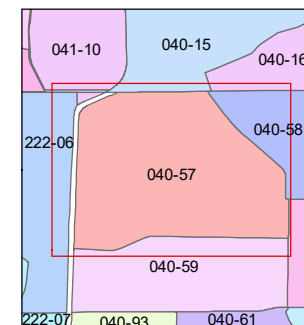
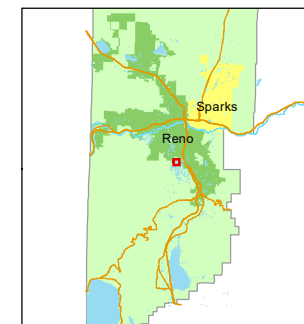


STATE OF NEVADA
WASHOE COUNTY
ASSESSOR'S OFFICE

1001 East Ninth Street, Building D
Reno, Nevada 89512
(775) 328-2231



1 inch = 200 feet



created by: SR 12/29/2017

updated: SR 07/28/21

area previously shown on map(s):

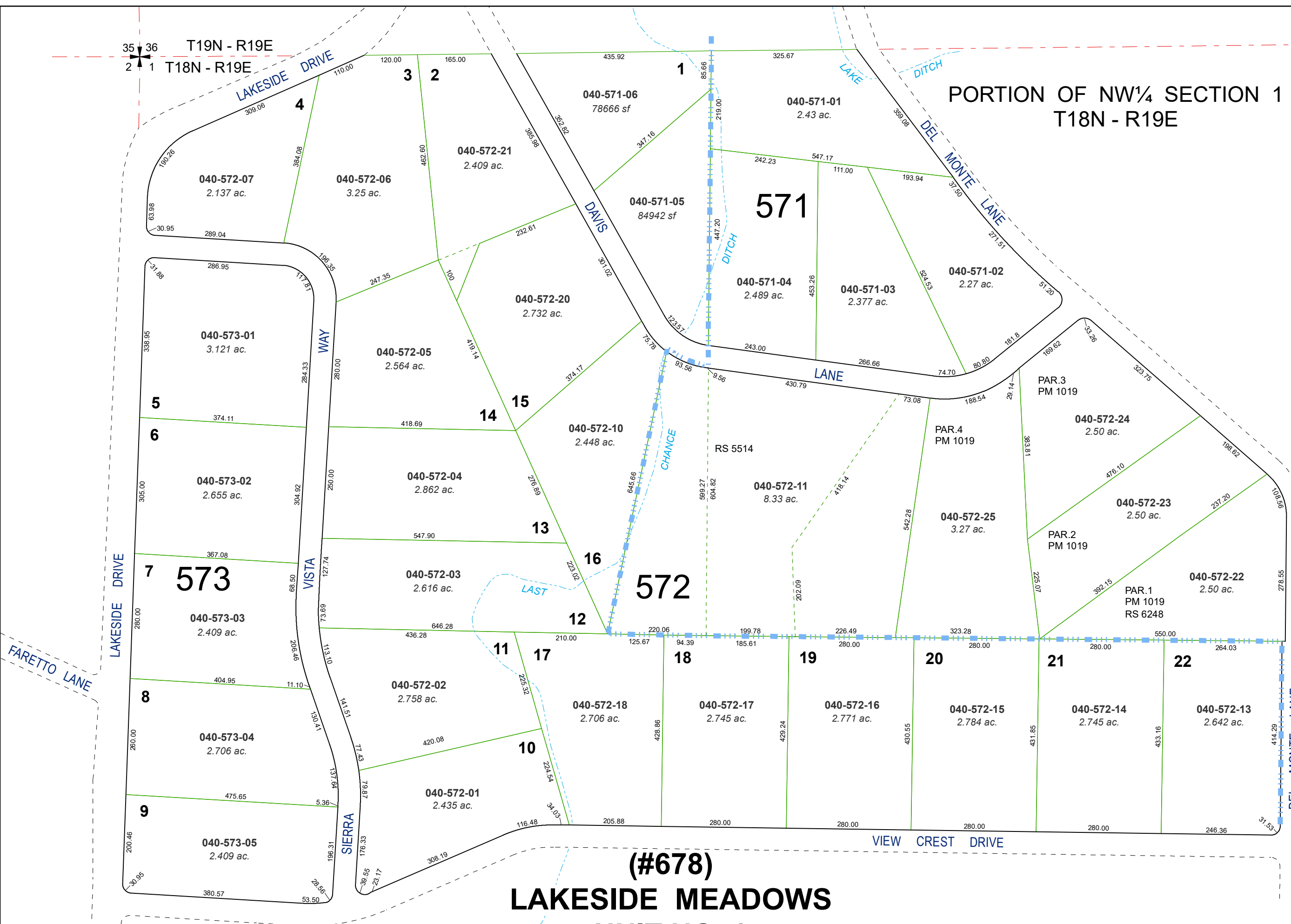
NOTE: This map was prepared for the use of the Washoe County Assessor for assessment and illustrative purposes only. It does not represent a survey of the premises. No liability is assumed as to the sufficiency or accuracy of the data delineated hereon.

35 36
2 1

T19N - R19E

T18N - R19E

PORTION OF NW¼ SECTION 1
T18N - R19E



(#678)
LAKESIDE MEADOWS
UNIT NO. 1