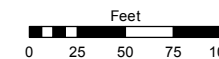


Assessor's Map Number

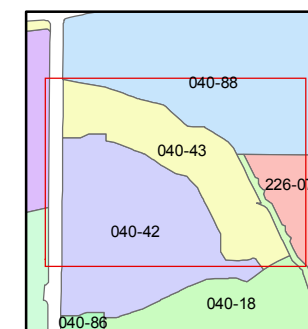
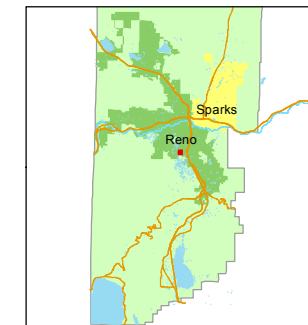
040-43

STATE OF NEVADA
WASHOE COUNTY
ASSESSOR'S OFFICE
Michael E. Clark, Assessor

1001 East Ninth Street
Building D
Reno, Nevada 89512
(775) 328-2231



1 inch = 100 feet



created by: SR 12/27/2017

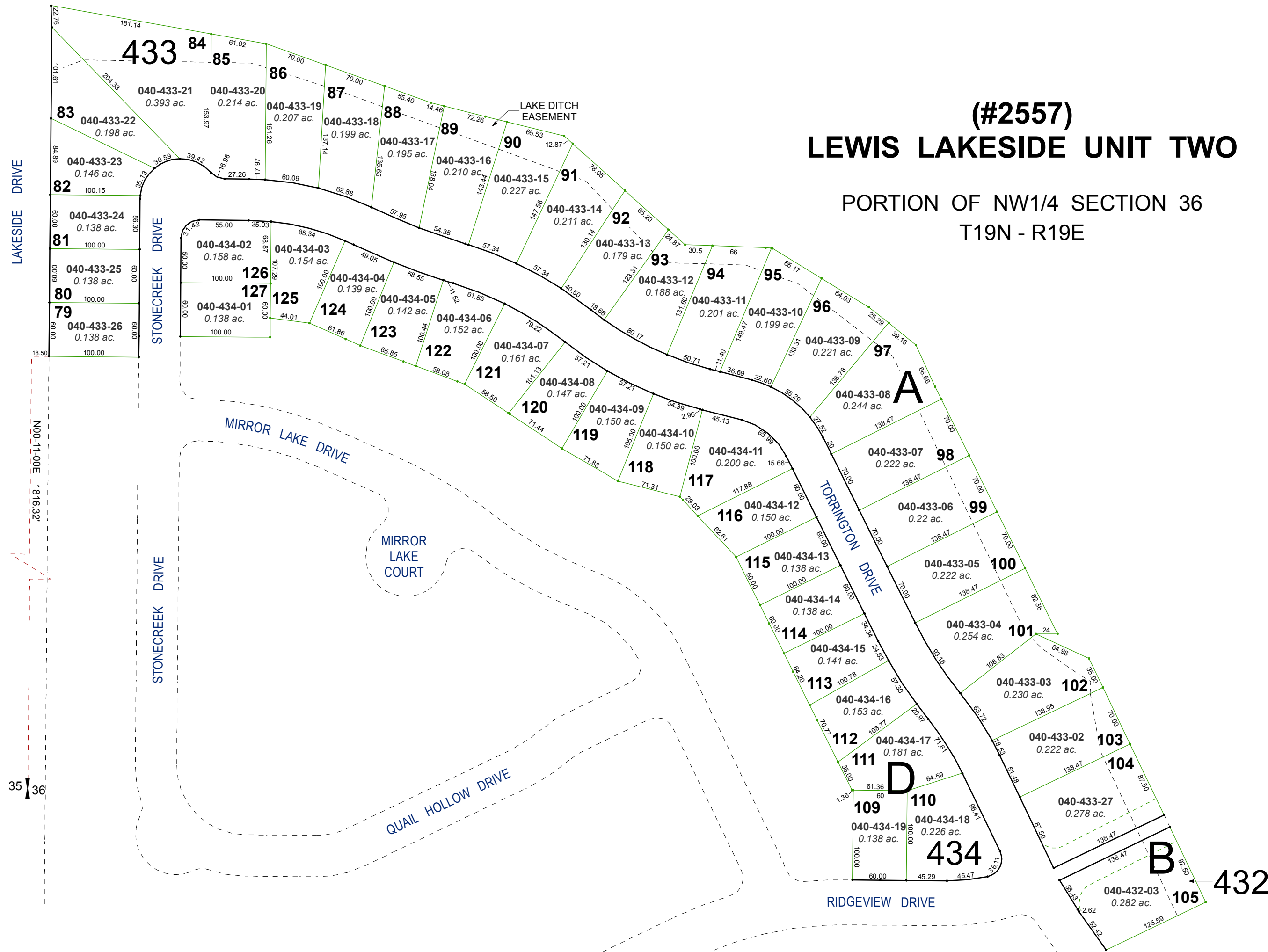
last updated: _____

area previously shown on map(s) _____

NOTE: This map was prepared for the use of the Washoe County Assessor for assessment and illustrative purposes only. It does not represent a survey of the premises. No liability is assumed as to the sufficiency or accuracy of the data delineated hereon.

(#2557) LEWIS LAKESIDE UNIT TWO

PORTION OF NW1/4 SECTION 36 T19N - R19E



LAKESIDE DRIVE

STONECREEK DRIVE

MIRROR LAKE DRIVE

STONECREEK DRIVE

QUAIL HOLLOW DRIVE

RIDGEVIEW DRIVE

LAKE DITCH EASEMENT

A

D

B

NOO-11-00E 1816.32'

35 | 36