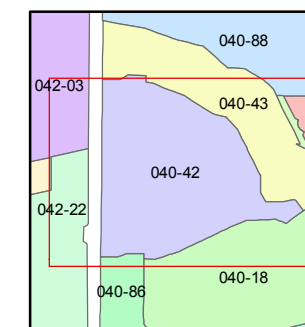
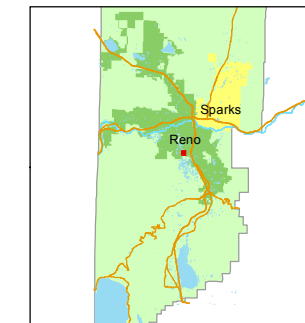




1 inch = 100 feet



created by: SR 12/26/2017

last updated:

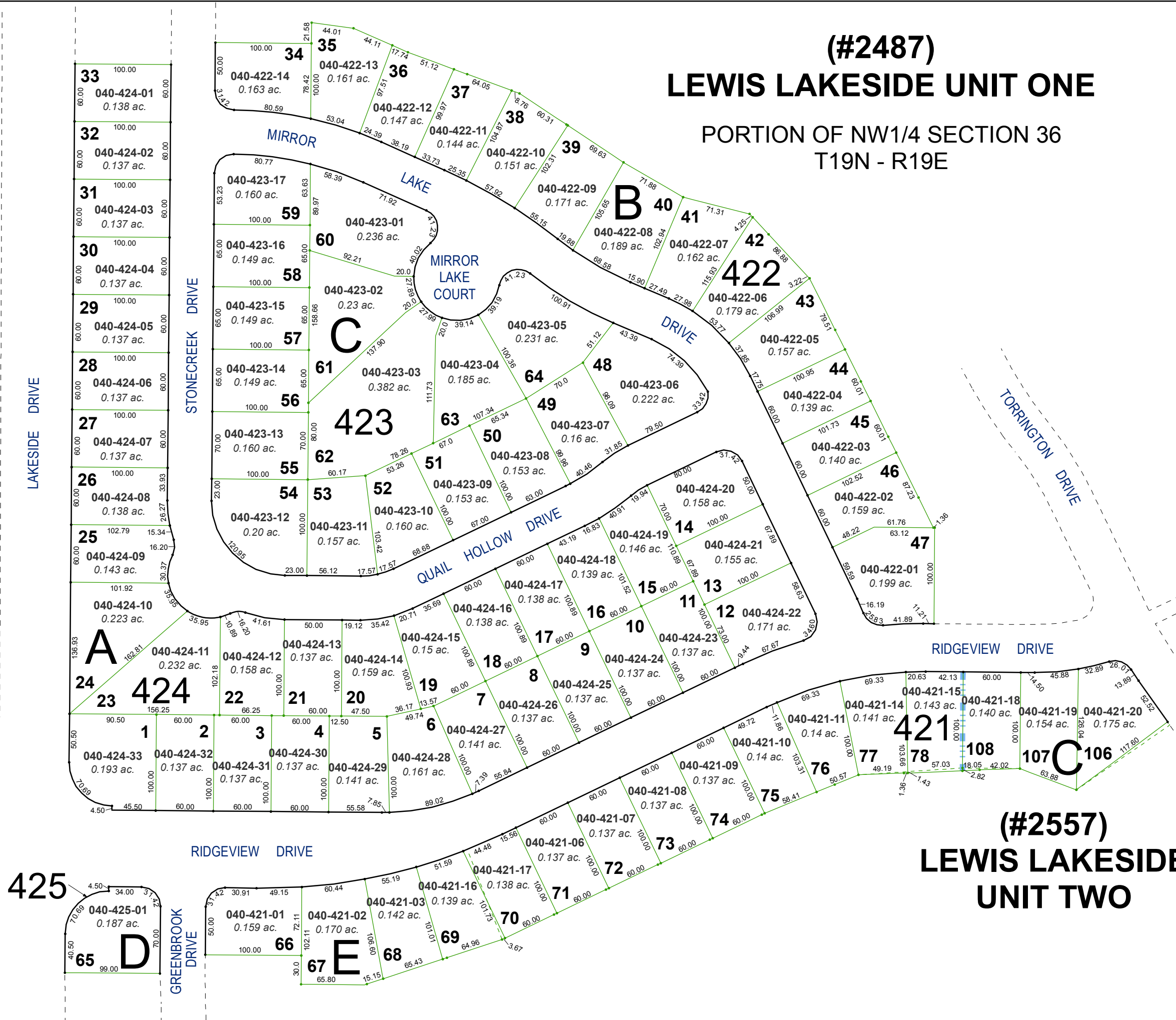
area previously shown on map(s)

040-43

NOTE: This map was prepared for the use of the Washoe County Assessor for assessment and illustrative purposes only. It does not represent a survey of the premises. No liability is assumed as to the sufficiency or accuracy of the data delineated hereon.

(#2487) LEWIS LAKESIDE UNIT ONE

PORTION OF NW1/4 SECTION 36 T19N - R19E



(#2557) LEWIS LAKESIDE UNIT TWO

