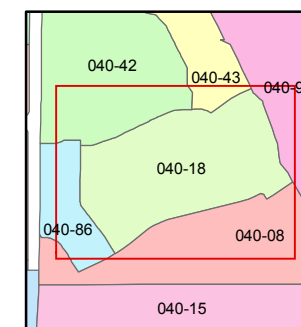
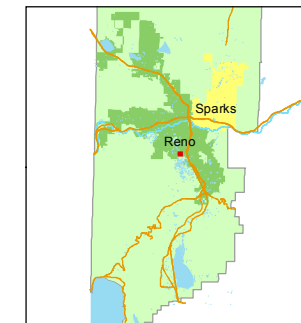


1 inch = 100 feet



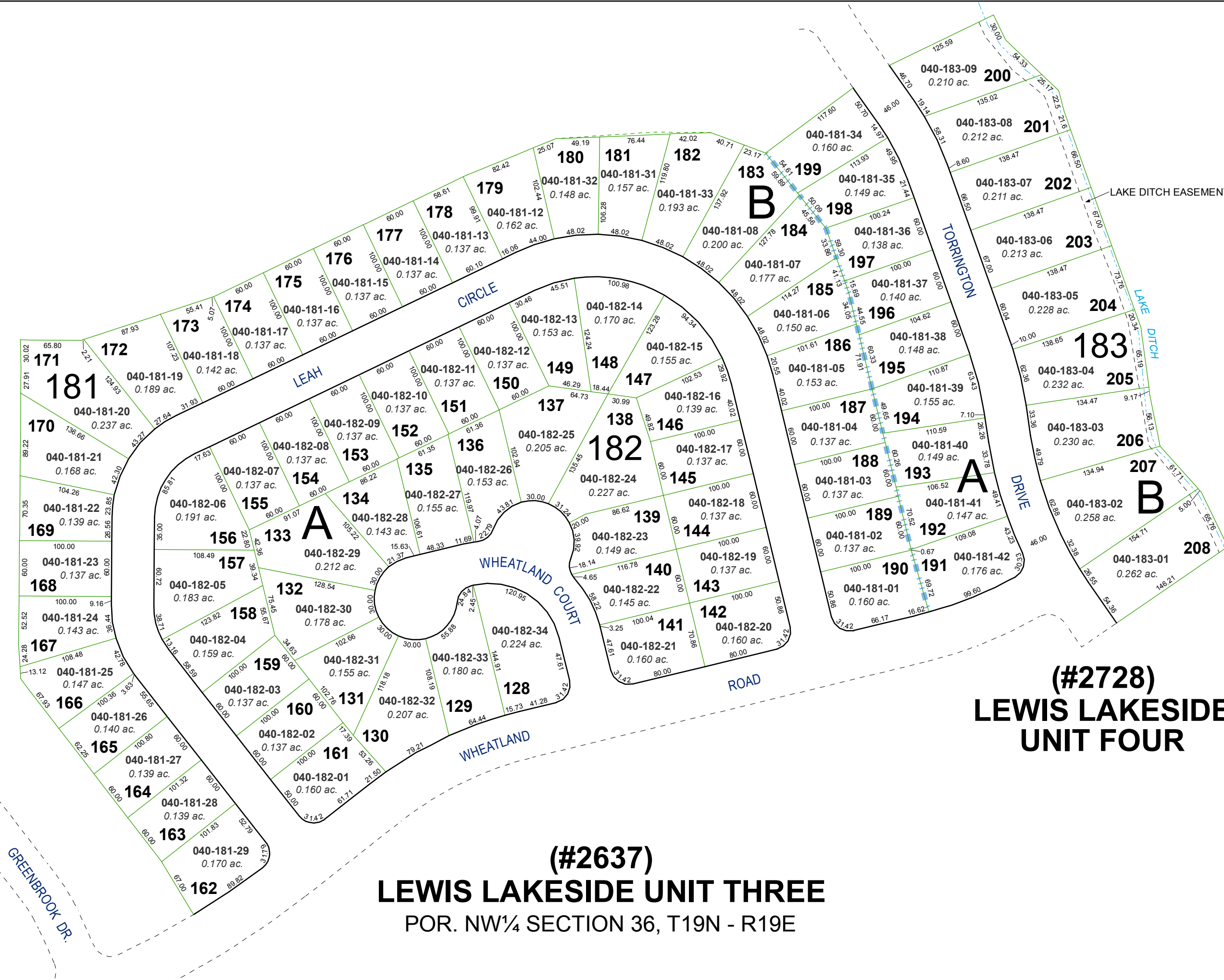
created by: KSB 11/06/2012

last updated: _____

area previously shown on map(s)

040-08

NOTE: This map was prepared for the use of the Washoe County Assessor for assessment and illustrative purposes only. It does not represent a survey of the premises. No liability is assumed as to the sufficiency or accuracy of the data delineated hereon.



(#2637)
LEWIS LAKESIDE UNIT THREE
POR. NW¼ SECTION 36, T19N - R19E

(#2728)
LEWIS LAKESIDE UNIT FOUR