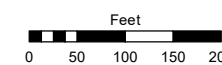
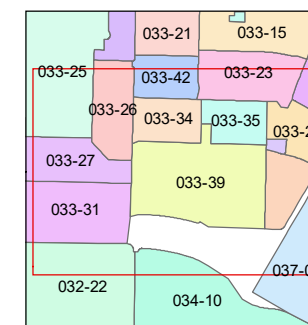
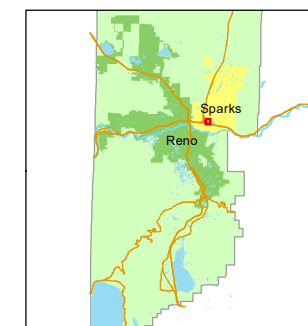


STATE OF NEVADA
WASHOE COUNTY
ASSESSOR'S OFFICE

1001 East Ninth Street, Building D
Reno, Nevada 89512
(775) 328-2231



1 inch = 200 feet



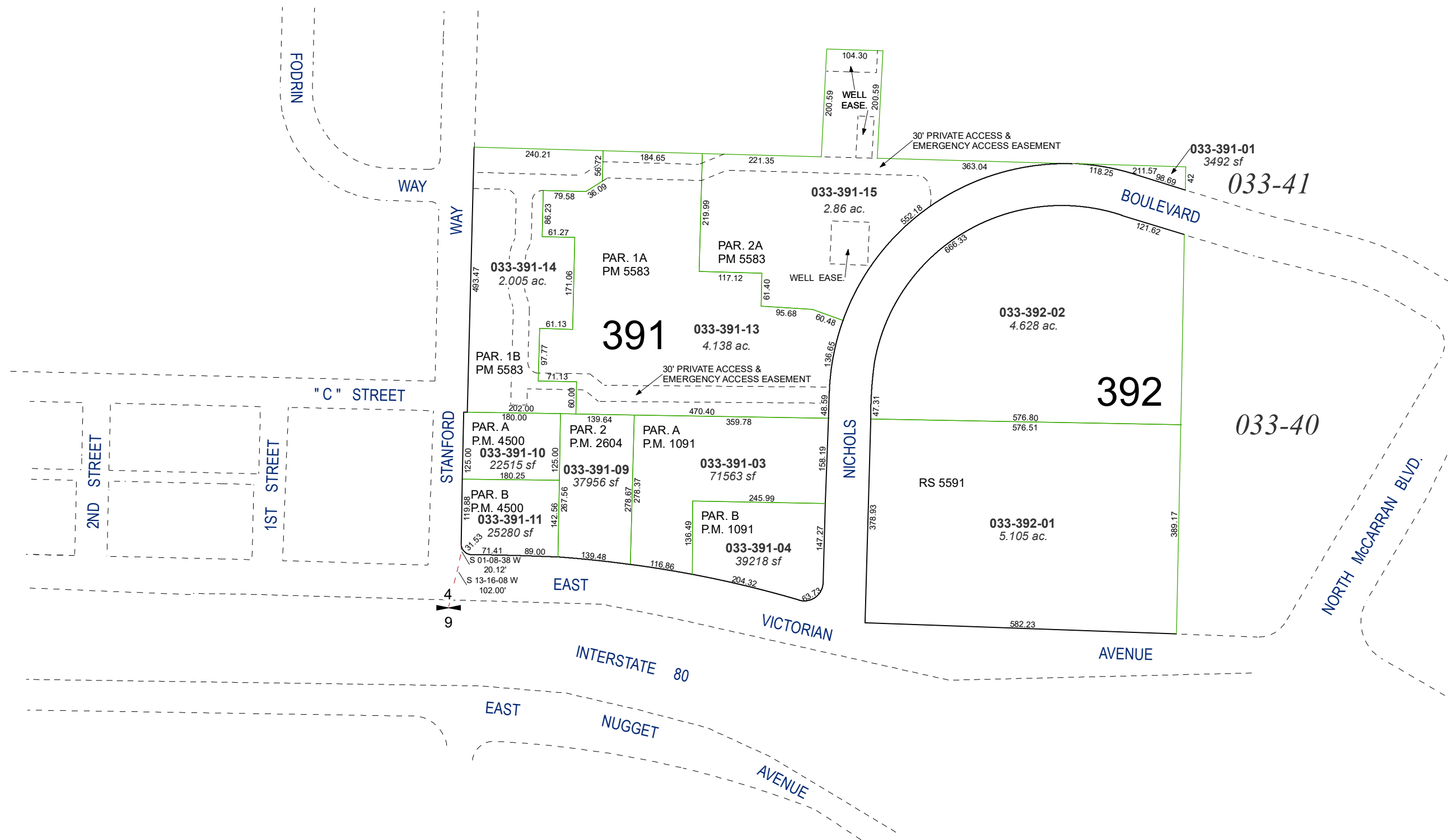
created by: NLH 6/14/2010

updated: EMG 10/03/14 JRA 7/30/21

JRA 4/07/22

area previously shown on map(s):

POR. OF SE 1/4 SECTION 4
T19N - R20E



NOTE: This map was prepared for the use of the Washoe County Assessor for assessment and illustrative purposes only. It does not represent a survey of the premises. No liability is assumed as to the sufficiency or accuracy of the data delineated hereon.