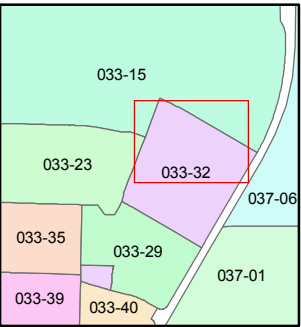
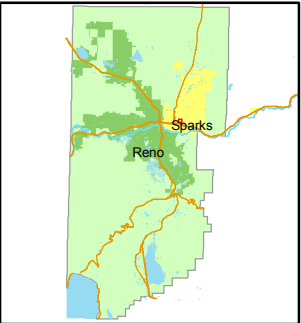


STATE OF NEVADA
WASHOE COUNTY
ASSESSOR'S OFFICE
Joshua G. Wilson, Assessor

1001 East Ninth Street
Building D
Reno, Nevada 89512
(775) 328-2231



1 inch = 50 feet



created by: NLH 6/07/2010

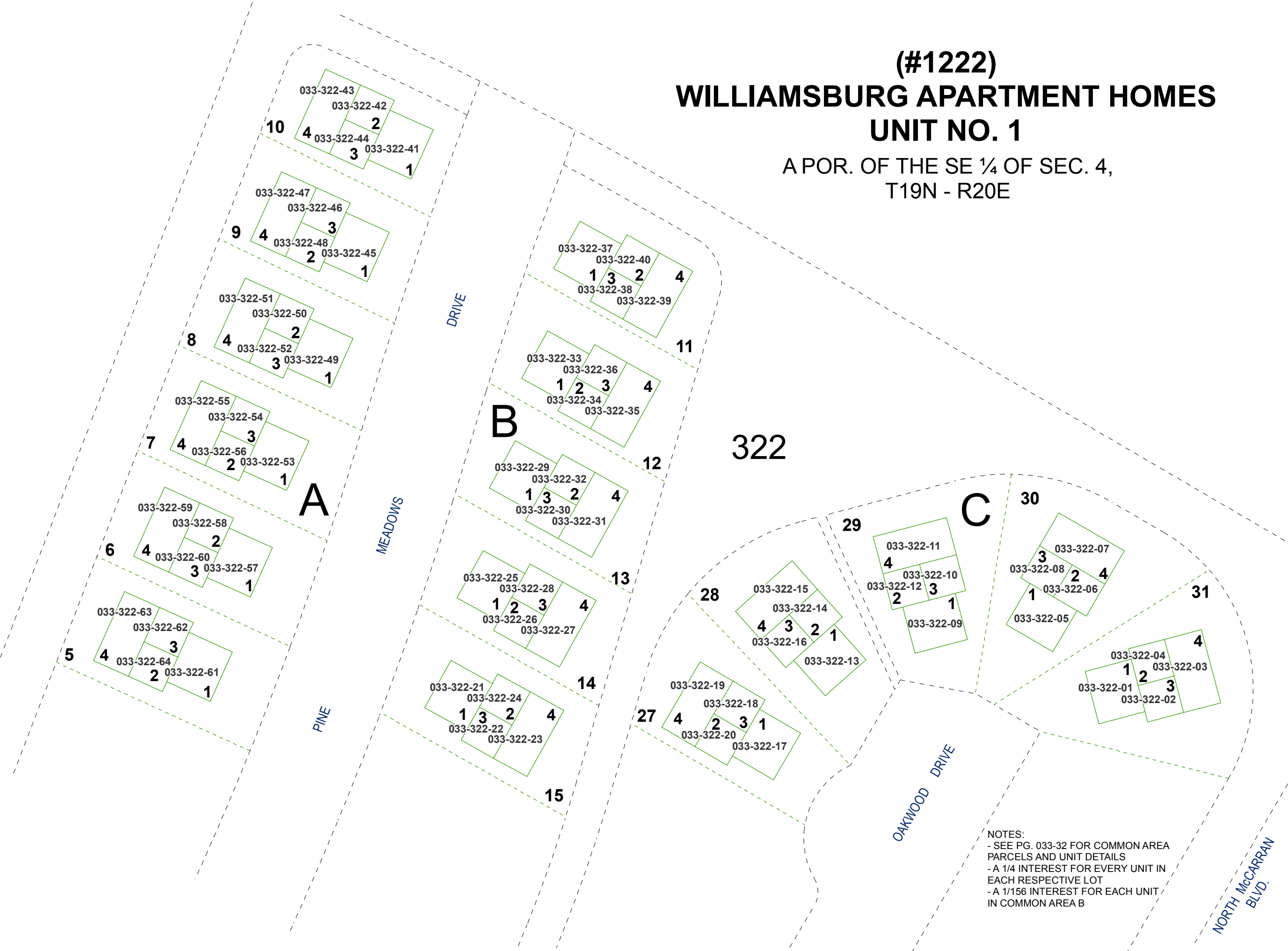
last updated: _____

area previously shown on map(s) _____

NOTE: This map was prepared for the use of the Washoe County Assessor for assessment and illustrative purposes only. It does not represent a survey of the premises. No liability is assumed as to the sufficiency or accuracy of the data delineated hereon.

(#1222)
WILLIAMSBURG APARTMENT HOMES
UNIT NO. 1

A POR. OF THE SE ¼ OF SEC. 4,
T19N - R20E



NOTES:
- SEE PG. 033-32 FOR COMMON AREA
PARCELS AND UNIT DETAILS
- A 1/4 INTEREST FOR EVERY UNIT IN
EACH RESPECTIVE LOT
- A 1/156 INTEREST FOR EACH UNIT
IN COMMON AREA B