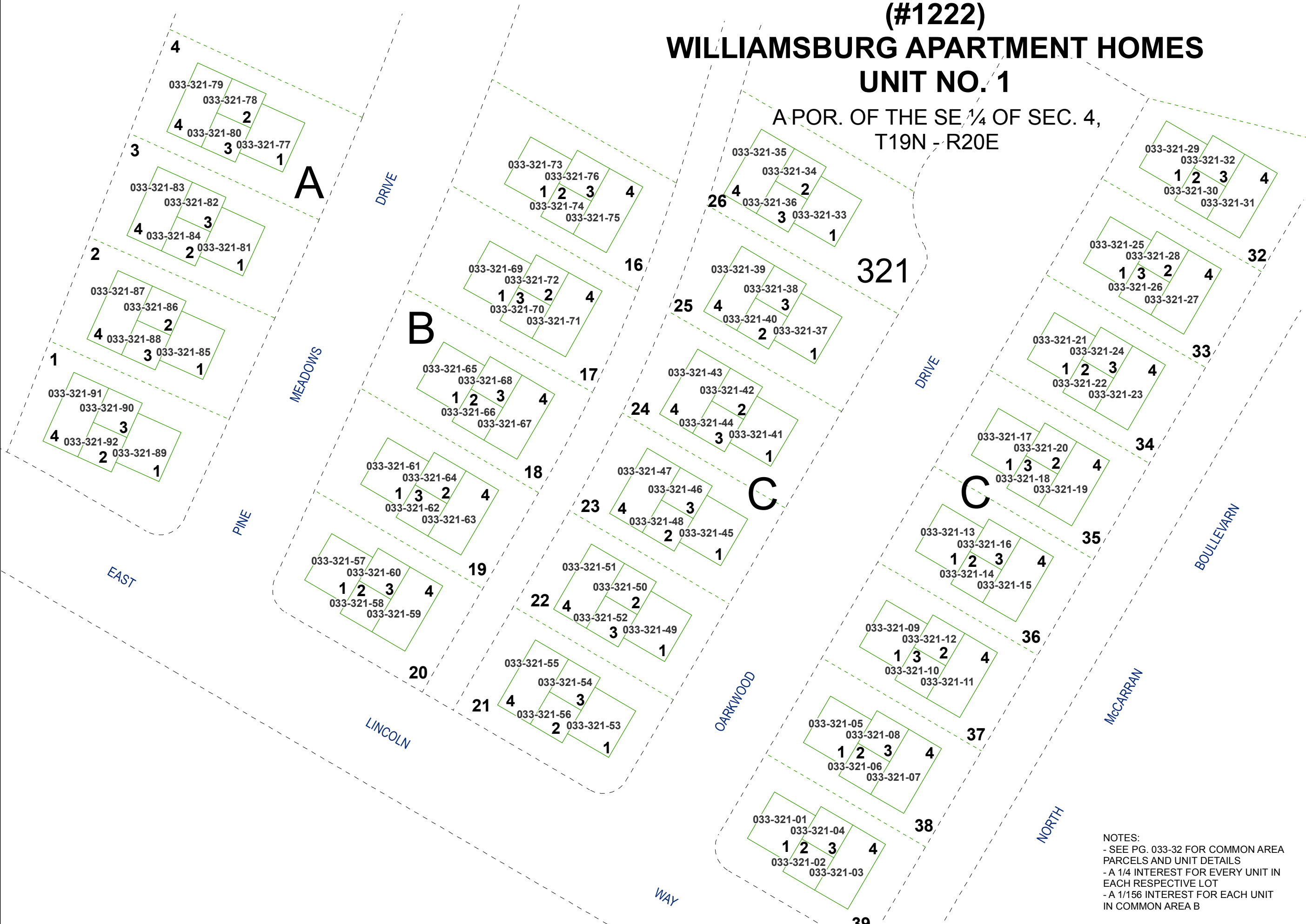


(#1222)  
**WILLIAMSBURG APARTMENT HOMES**  
**UNIT NO. 1**

A POR. OF THE SE ¼ OF SEC. 4,  
T19N - R20E



NOTES:  
- SEE PG. 033-32 FOR COMMON AREA  
PARCELS AND UNIT DETAILS  
- A 1/4 INTEREST FOR EVERY UNIT IN  
EACH RESPECTIVE LOT  
- A 1/156 INTEREST FOR EACH UNIT  
IN COMMON AREA B

Assessor's Map Number

**033-32-S1**

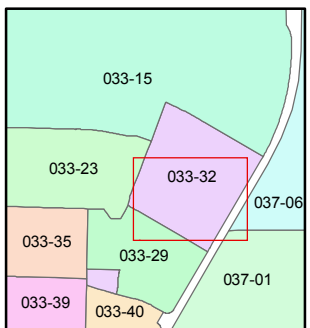
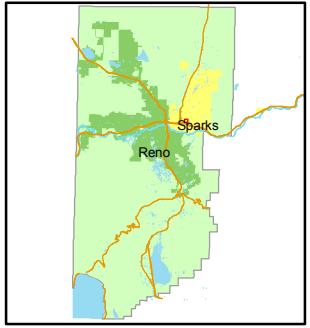
STATE OF NEVADA  
**WASHOE COUNTY**  
**ASSESSOR'S OFFICE**  
Joshua G. Wilson, Assessor

1001 East Ninth Street  
Building D  
Reno, Nevada 89512  
(775) 328-2231



Feet  
0 5 10 20 30 40

1 inch = 50 feet



created by: NLH 6/07/2010

last updated: \_\_\_\_\_

area previously shown on map(s)  
\_\_\_\_\_

NOTE: This map was prepared for the use of the Washoe County Assessor for assessment and illustrative purposes only. It does not represent a survey of the premises. No liability is assumed as to the sufficiency or accuracy of the data delineated hereon.