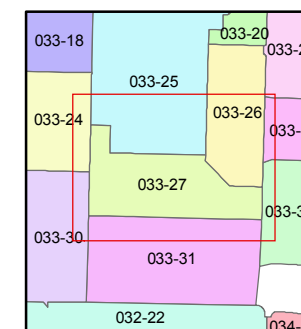
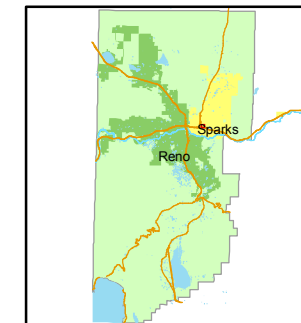


1 inch = 100 feet



created by: NLH 5/26/2010

last updated: _____

area previously shown on map(s)

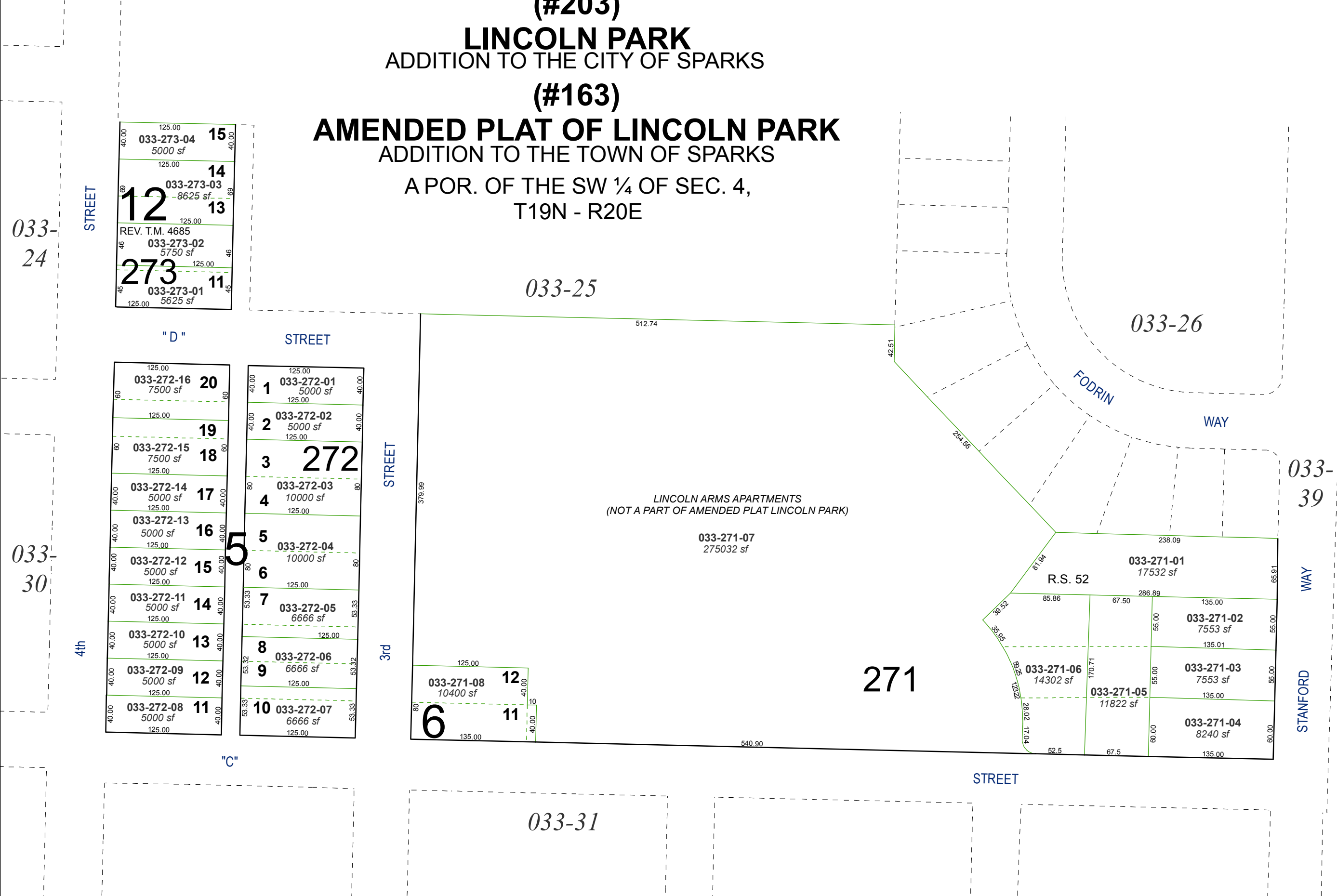
033-31

NOTE: This map was prepared for the use of the Washoe County Assessor for assessment and illustrative purposes only. It does not represent a survey of the premises. No liability is assumed as to the sufficiency or accuracy of the data delineated hereon.

(#203)
LINCOLN PARK
ADDITION TO THE CITY OF SPARKS

(#163)
AMENDED PLAT OF LINCOLN PARK
ADDITION TO THE TOWN OF SPARKS

A POR. OF THE SW ¼ OF SEC. 4,
T19N - R20E



LINCOLN ARMS APARTMENTS
(NOT A PART OF AMENDED PLAT LINCOLN PARK)

033-271-07
275032 sf

033-271-01
17532 sf

033-271-02
7553 sf

033-271-06
14302 sf

033-271-05
11822 sf

033-271-03
7553 sf

033-271-04
8240 sf

271

033-31

033-24

033-30

033-39

WAY

WAY

STREET

"D" STREET

"C"

STREET

STREET

3rd

4th

125.00	033-273-04	15	5000 sf
125.00	033-273-03	14	8625 sf
125.00	033-273-02	13	5750 sf
125.00	033-273-01	11	5625 sf

REV. T.M. 4685

125.00	033-272-16	20	7500 sf
125.00	033-272-15	19	7500 sf
125.00	033-272-14	18	5000 sf
125.00	033-272-13	17	5000 sf
125.00	033-272-12	16	5000 sf
125.00	033-272-11	15	5000 sf
125.00	033-272-10	14	5000 sf
125.00	033-272-09	13	5000 sf
125.00	033-272-08	12	5000 sf
125.00	033-272-07	11	6666 sf

125.00	033-272-01	1	5000 sf
125.00	033-272-02	2	5000 sf
125.00	033-272-03	3	10000 sf
125.00	033-272-04	4	10000 sf
125.00	033-272-05	5	6666 sf
125.00	033-272-06	6	6666 sf
125.00	033-272-07	7	6666 sf
125.00	033-272-08	8	6666 sf
125.00	033-272-09	9	6666 sf
125.00	033-272-10	10	6666 sf

125.00	033-271-08	12	10400 sf
125.00	033-271-09	11	10400 sf