

(#85) O'SULLIVAN TRACT - AMENDED

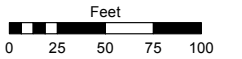
A POR. OF THE SW ¼ OF SEC. 4,
T19N - R20E

Assessor's Map Number

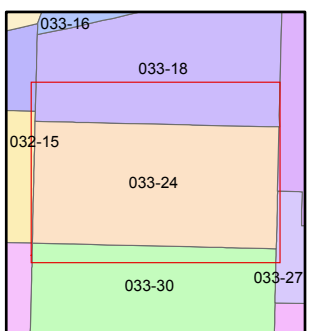
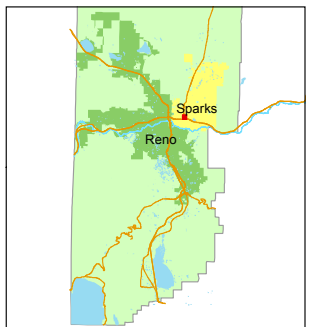
033-24

STATE OF NEVADA
WASHOE COUNTY
ASSESSOR'S OFFICE
Michael E. Clark, Assessor

1001 East Ninth Street
Building D
Reno, Nevada 89512
(775) 328-2231



1 inch = 100 feet



created by: NLH 05/25/2010

last updated: NLH 7/9/12 SR 6/6/18

area previously shown on map(s)

NOTE: This map was prepared for the use of the Washoe County Assessor for assessment and illustrative purposes only. It does not represent a survey of the premises. No liability is assumed as to the sufficiency or accuracy of the data delineated hereon.

