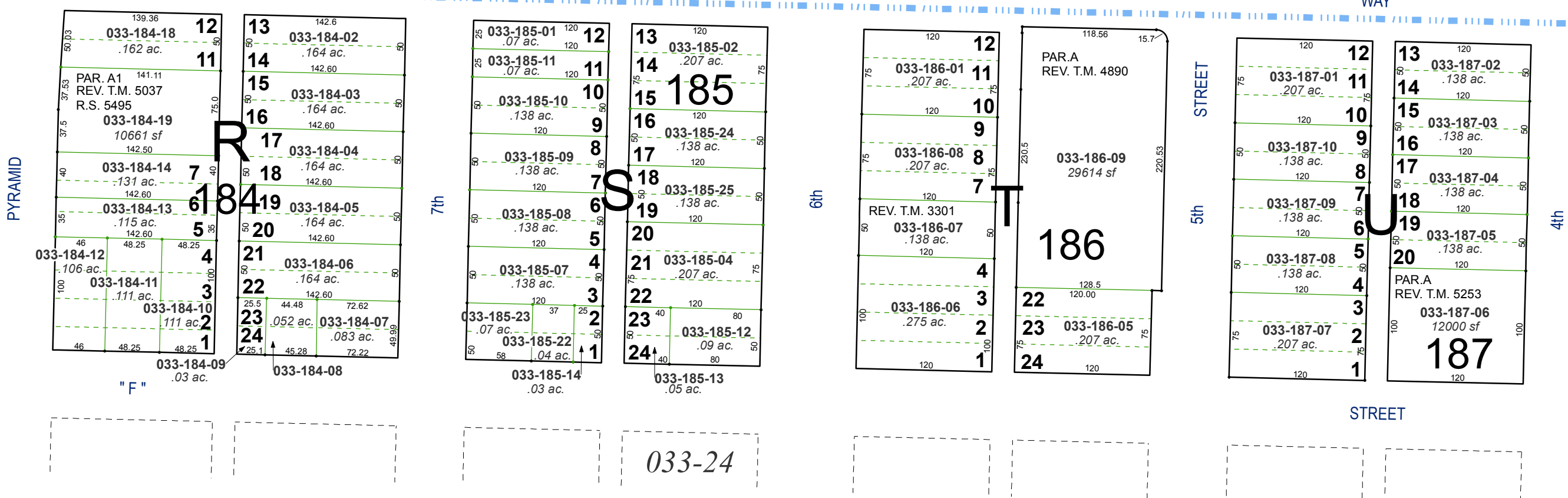
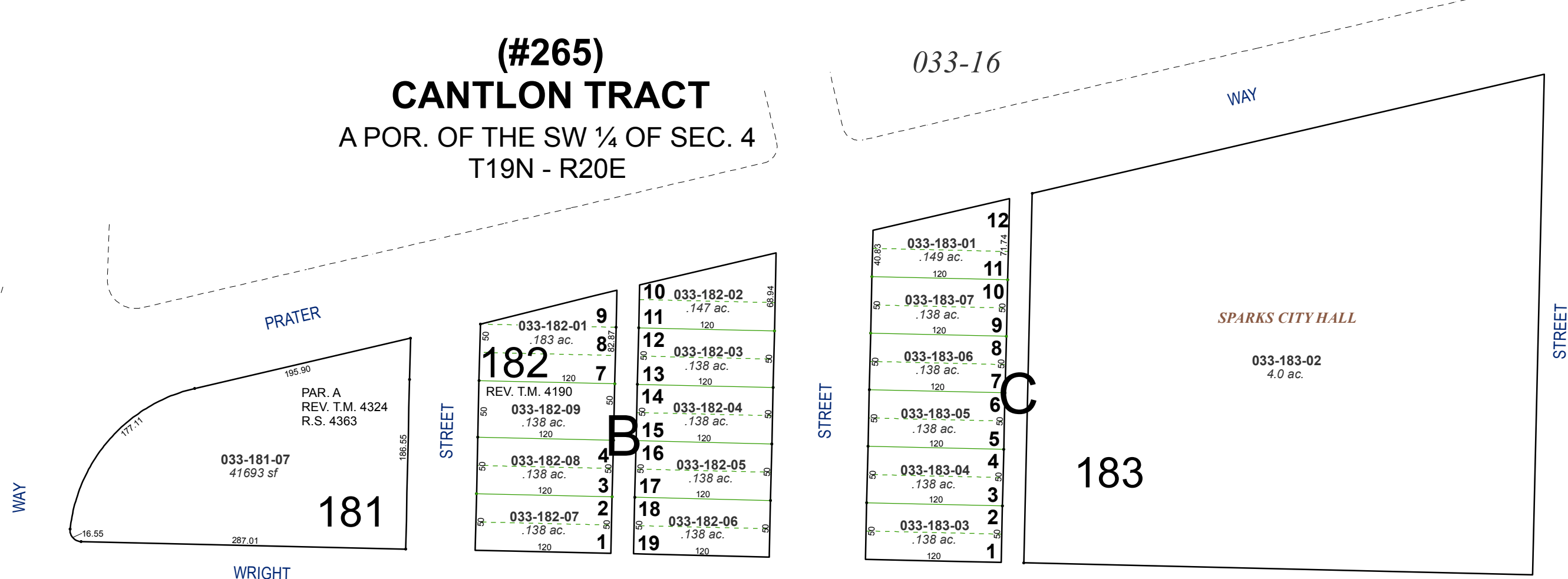


(#265)
CANTLON TRACT
 A POR. OF THE SW ¼ OF SEC. 4
 T19N - R20E

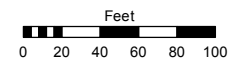


(#85)
O'SULLIVAN ADDITION

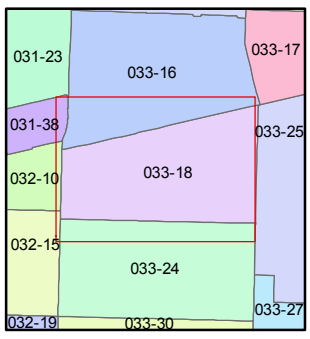
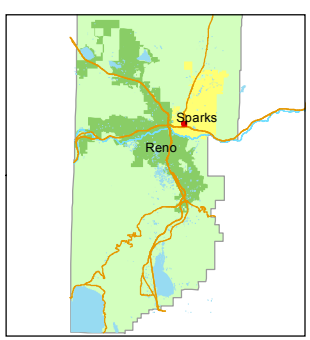
Assessor's Map Number
033-18

STATE OF NEVADA
WASHOE COUNTY
 ASSESSOR'S OFFICE
 Michael E. Clark, Assessor

1001 East Ninth Street
 Building D
 Reno, Nevada 89512
 (775) 328-2231



1 inch = 100 feet



created by: NLH 5/21/2010

last updated: KSB 6/19/13 JKF 2/14/18

area previously shown on map(s)

NOTE: This map was prepared for the use of the Washoe County Assessor for assessment and illustrative purposes only. It does not represent a survey of the premises. No liability is assumed as to the sufficiency or accuracy of the data delineated hereon.