

(#439)

GREEN BRAE TERRACE SUBDIVISION

A POR. OF THE W 1/2 OF SEC. 4, T19N - R20E

Assessor's Map Number

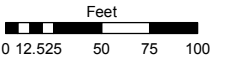
033-16

STATE OF NEVADA

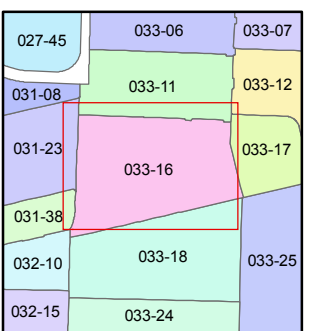
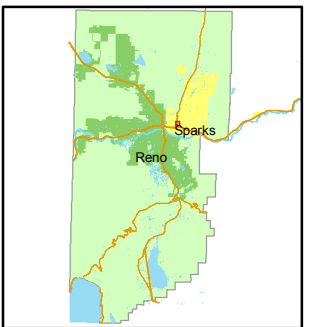
WASHOE COUNTY ASSESSOR'S OFFICE

Joshua G. Wilson, Assessor

1001 East Ninth Street
Building D
Reno, Nevada 89512
(775) 328-2231



1 inch = 100 feet

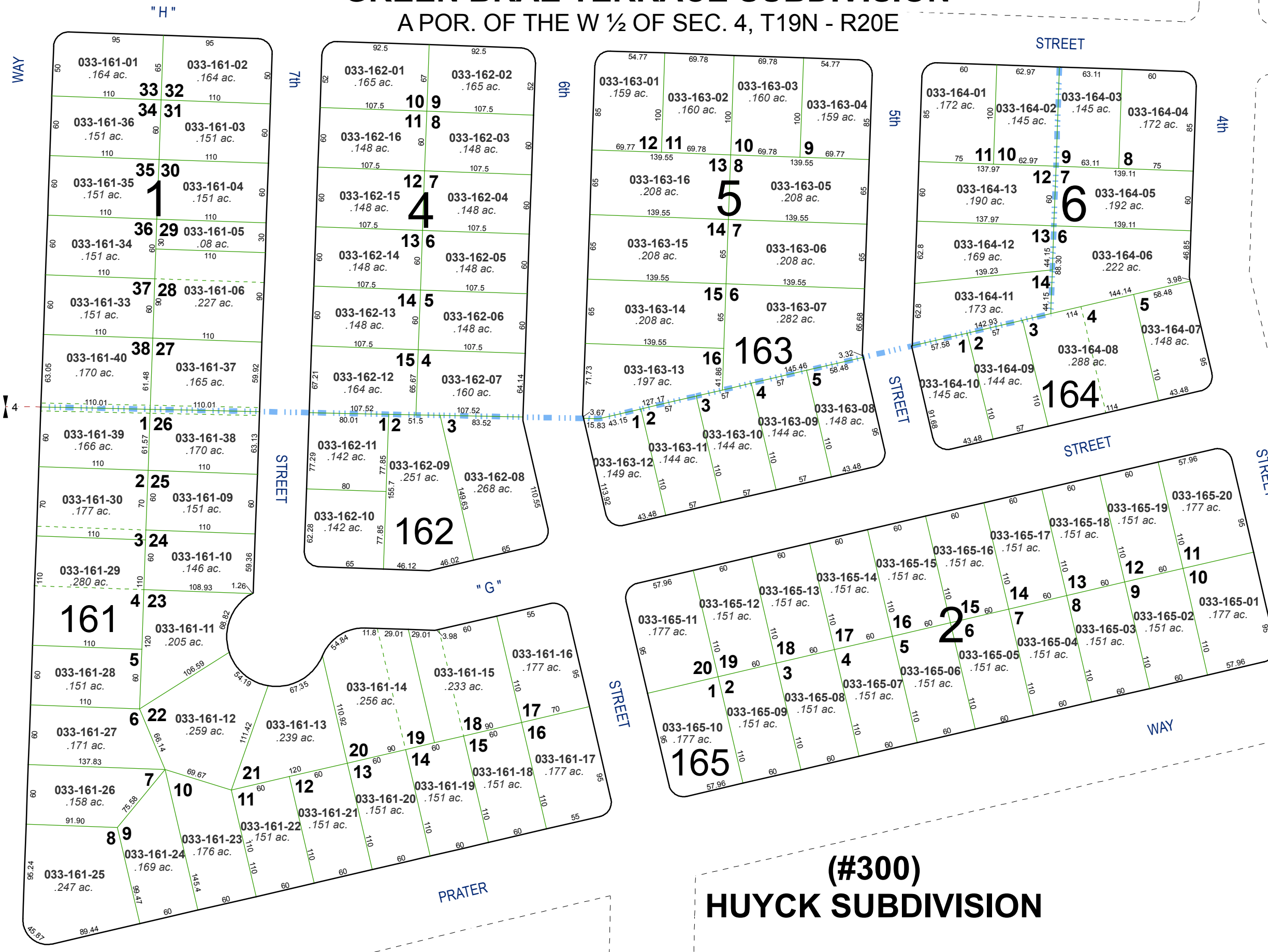


created by: NLH 11/05/2010

last updated: _____

area previously shown on map(s) _____

NOTE: This map was prepared for the use of the Washoe County Assessor for assessment and illustrative purposes only. It does not represent a survey of the premises. No liability is assumed as to the sufficiency or accuracy of the data delineated hereon.



(#300) HUYCK SUBDIVISION

"H" STREET

"G" STREET

PYRAMID

PRATER

7th ST.