

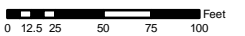
**(#463)**  
**GREEN BRAE TERRACE SUB.**  
**ADDITION NO. 2**  
 PORTION NW 1/4 SECTION 4, T19N - R20E

Assessor's Map Number

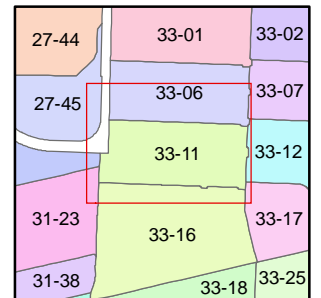
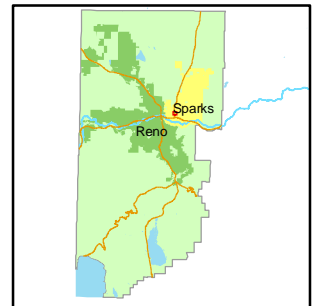
**033-11**

STATE OF NEVADA  
**WASHOE COUNTY**  
**ASSESSOR'S OFFICE**

Joshua G. Wilson, Assessor  
 1001 East Ninth Street  
 Building D  
 Reno, Nevada 89512  
 (775) 328-2231



1 inch = 100 feet



created by: CFB 04/16/2009

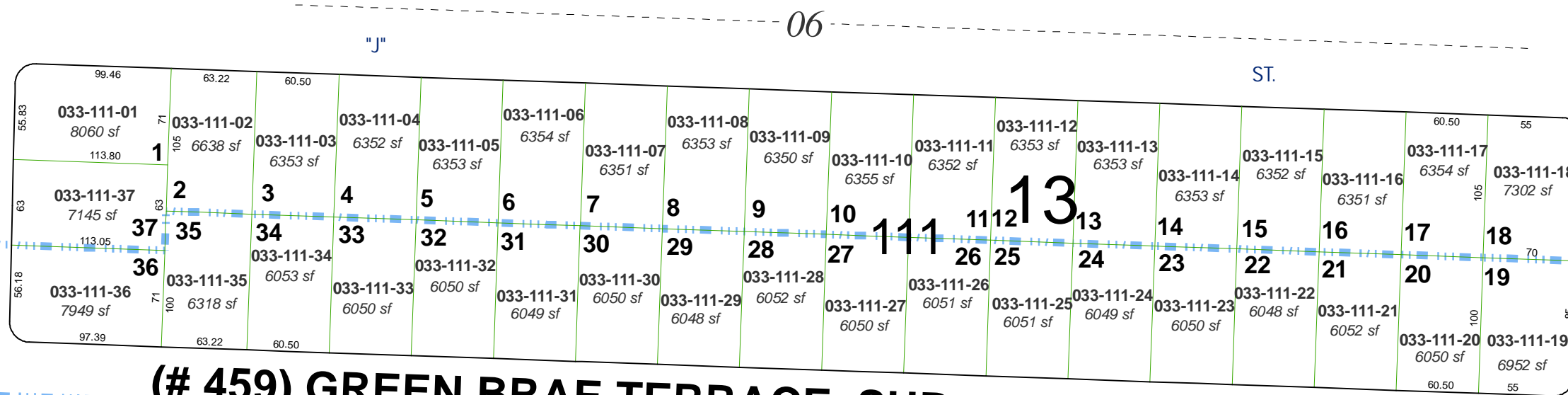
last updated: \_\_\_\_\_

area previously shown on map(s) \_\_\_\_\_

NOTE: This map was prepared for the use of the Washoe County Assessor for assessment and illustrative purposes only. It does not represent a survey of the premises. No liability is assumed as to the sufficiency or accuracy of the data delineated hereon.

BK.27  
 PG.45

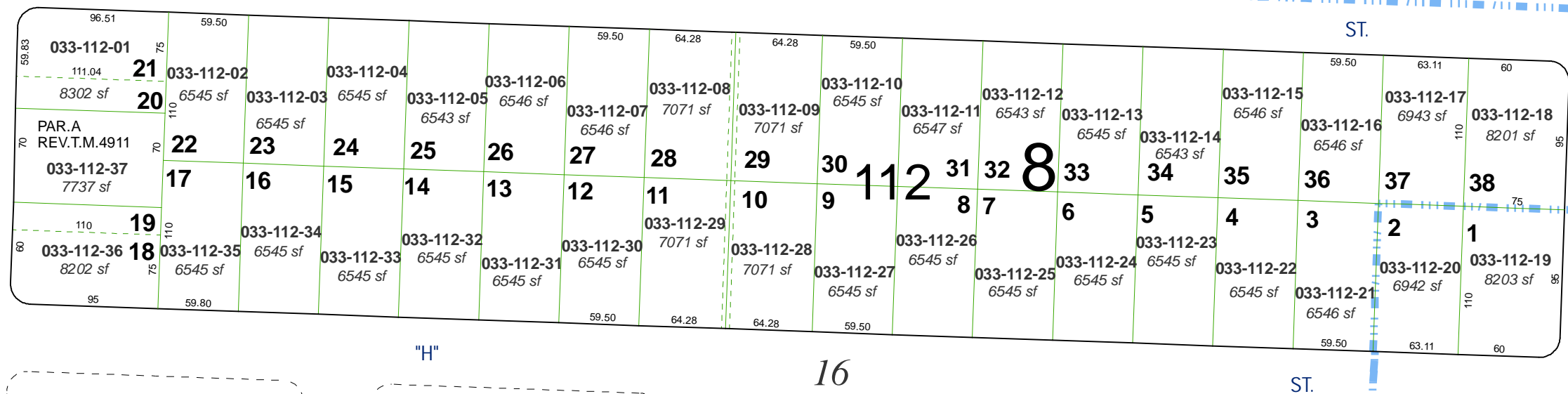
WAY



**(# 459) GREEN BRAE TERRACE SUB. - ADDITION NO. 1**

BK.31  
 PG.07

PYRAMID



**(#439) GREEN BRAE TERRACE SUBDIVISION**

**(#346)  
 HUYCK  
 SUB.**