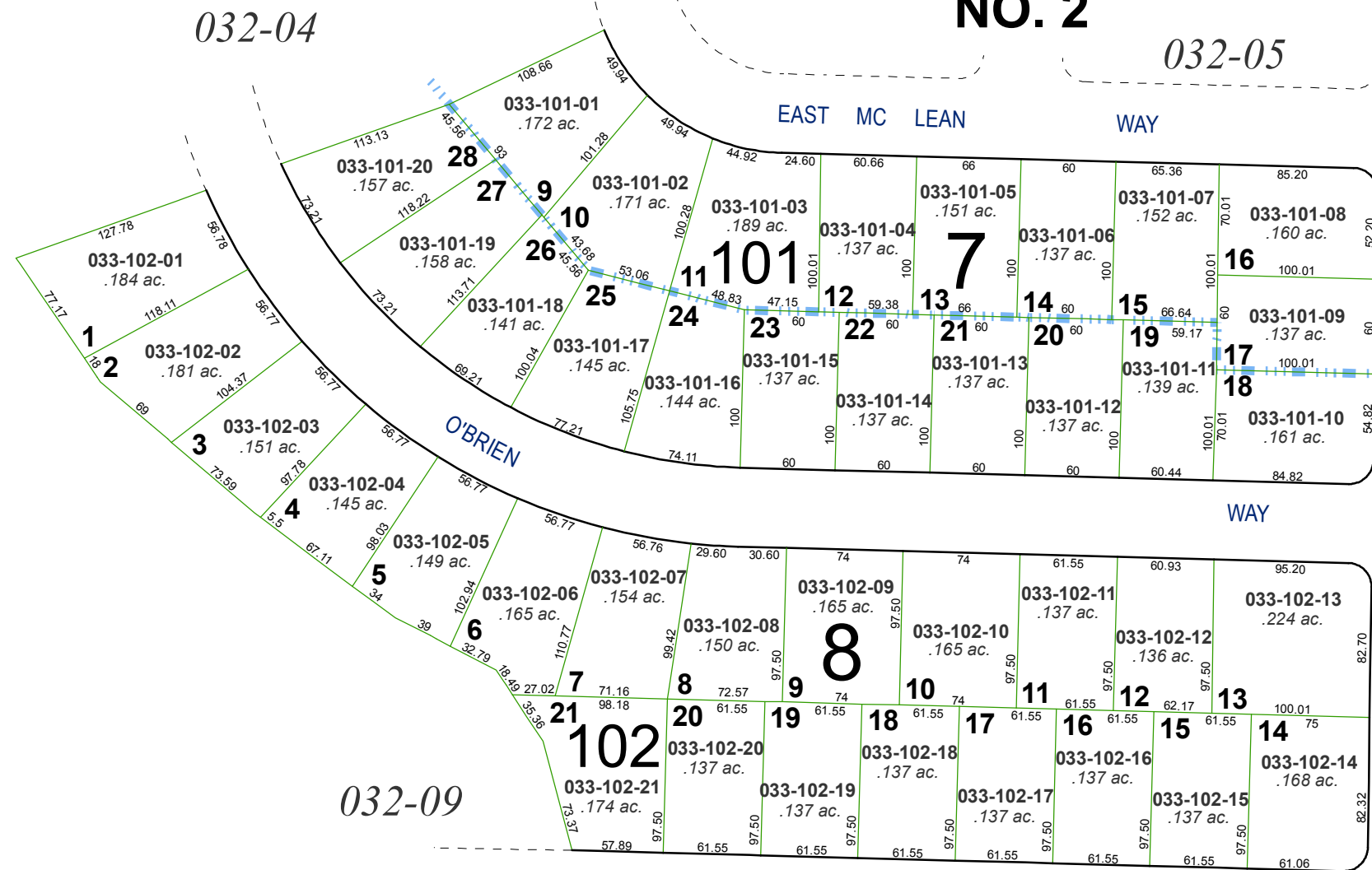


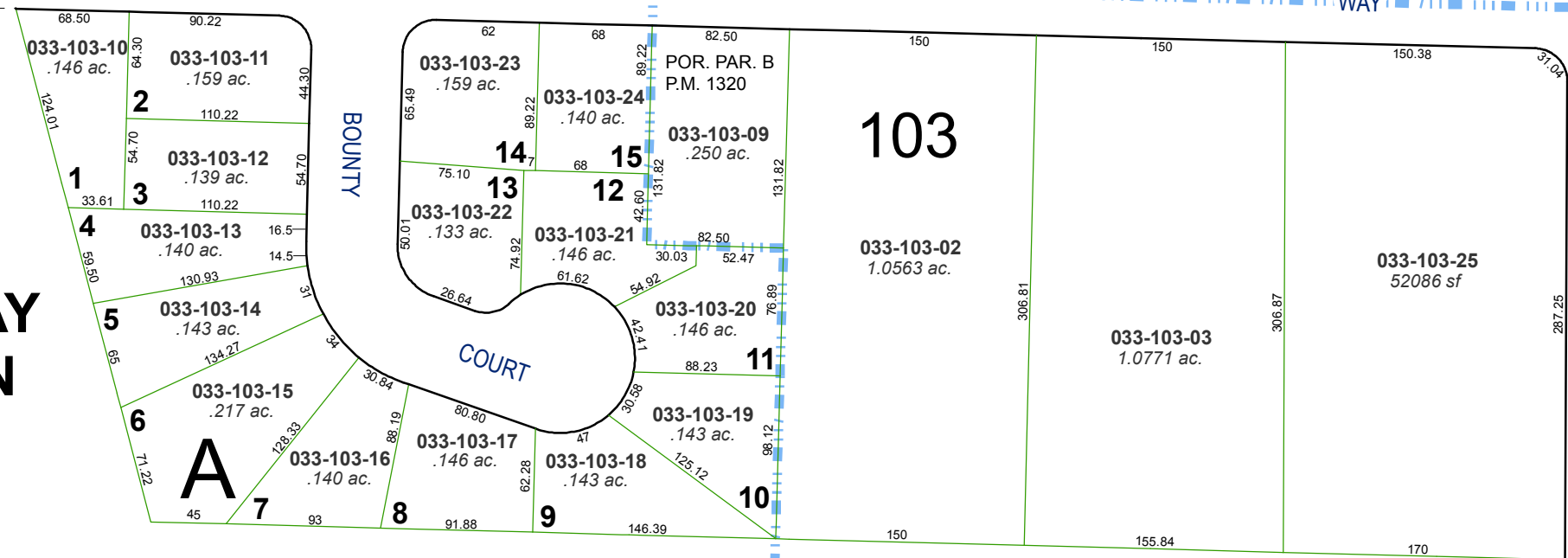
**(#789)
TANGLEWOOD ESTATES
NO. 2**

A POR. OF THE NE ¼ OF SEC. 4,
T19N - R20E



**(#824)
GREEN BRAE TERRACE
SUBDIVISION
ADDITION NO. 18**

**(#2147)
GLEESON WAY
SUBDIVISION**

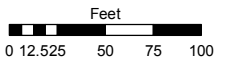


Assessor's Map Number

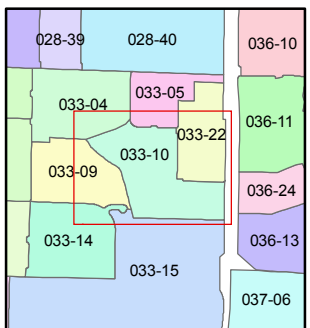
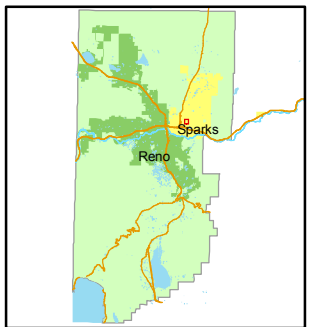
033-10

STATE OF NEVADA
WASHOE COUNTY
ASSESSOR'S OFFICE
Joshua G. Wilson, Assessor

1001 East Ninth Street
Building D
Reno, Nevada 89512
(775) 328-2231



1 inch = 100 feet



created by: NLH 5/20/2010

last updated: _____

area previously shown on map(s) _____

NOTE: This map was prepared for the use of the Washoe County Assessor for assessment and illustrative purposes only. It does not represent a survey of the premises. No liability is assumed as to the sufficiency or accuracy of the data delineated hereon.